

## DALI Emergency Lighting and Exit Signs chosen at prestigious Holbein Gardens, Belgravia.



Lighting-Power-Control



*Image: Holbein Gardens, Holbein Place, London*

Opening Q4 2022, this 26,500 sq. ft building will offer an outstanding sustainable workspace for businesses wishing to locate to this highly sought-after area in Belgravia, London. Holbein Gardens has been designed for emissions 30% below industry targets and the occupiers will save 50% on energy compared with typical London offices. Designed for a significant biodiversity gain, this all-electric building has many innovative features such as rainwater capture for reuse and a design that allows for easy future disassembly.

The building includes spaces for 79 bicycles, a 714 sq. ft communal roof garden with outdoor kitchen, Juliet balconies and six floors each consisting of between 3,600 and 4,700 sq. ft of office space.

The building has achieved a BREEAM Outstanding rating for sustainability, the international WELL Gold standard as well as the Wired Score Gold Certificate.

The electrical designers on the project had decided to make use of natural light when illuminating all areas in the building and so chose a DALI system to balance the need of artificial lighting with natural daylight. RDF Lighting Power and Control were approached to provide the emergency lighting and exit signage using our highly efficient LED luminaires from TM Technologie. We were asked to provide fully addressable self-contained emergency lighting to allow the DALI lighting control system to be able to monitor and report on the status of all emergency lights and exit signs.

Being able to remotely monitor emergency lighting delivers large savings on maintenance costs since all monthly and annual testing (required by Law) are performed automatically and the results stored on the central DALI gateway with any errors flagged to the maintenance team for investigation.



*Images: DALI logo*

All TM Technologie products are available as DALI emergency addressable versions and can also be dimmed or held in non-maintained mode, switching to full output when escape from the building is required such as due to mains failure.



*Images: Metal Primo G*

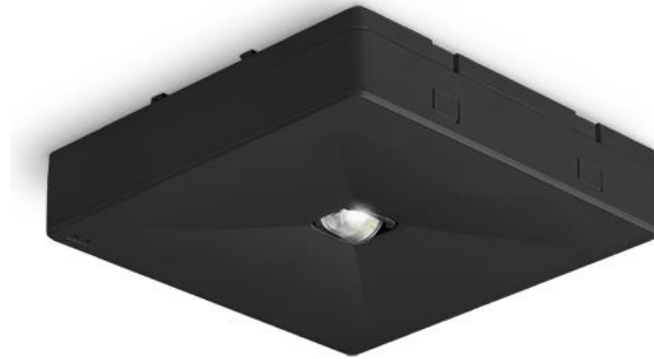
We were asked to provide our architectural wall and ceiling mount exit sign for which the Primo G was the perfect fit. All Primo range products are available as standard in polished or brush stainless steel as well as white or black powder coated paint. The client chose matching powder coat finish Primo versions to blend in with the architectural lighting design. ALL RAL colours are available on request.

For the emergency lighting, the client wanted to use discreet emergency lighting and so the recessed fitting ONTEC C was chosen with the M2 optics for the open areas and the C1 optic for corridor areas.



*Images: Black ONTEC C recess fitting*

The open area ONTEC C delivers 288lm with only a 3W LED light source and is available in white or black as standard and can also be provided in any RAL colour to match the required décor or corporate colours. The DALI LED driver and battery clamshell fit through the 7cm mounting hole for simple installation even where access is difficult.



*Images: Black ONTEC R surface mount fitting*

For the escape route areas where the ceiling is solid, such as in stairwells then the surface mount ONTEC R was selected with the C1 optic. These corridor optics deliver 246lm from just a 2W LED light source and can still provide sufficient light levels for emergency escape routes even when spaced at 25m apart at 4m height.

All our emergency lights and exit signs are 3<sup>rd</sup> party tested and are British Kitemark certified as well as being labelled with the UKCA and CE mark to show compliance to all relevant UK and European standards for automatic addressable emergency lighting.

RDF have a wide range of TM Technologie emergency lights in stock in the UK and provide access to their full range of emergency lights, self-contained systems, and smart addressable central battery systems for specification projects. See [our website](#) for our full range of DALI lighting products as well as our static inverters, legacy DC central battery systems and UPS systems.