

Providing clean air and reduced CO₂ levels in the most challenging conditions.

CleanLight is a powerful LED panel, proven to clean the air by destroying viruses and bacteria, including COVID-19 wherever it shines.

Approved by eminent microbiologist Dr Carl Edwards and extensively tested in laboratories as well as real-world trials, CleanLight has been proven to eliminate the problem of bacteria, viruses, pollutants, and odours in the air across all indoor environments.

AIR QUALITY AUDIT



Our Air Quality Audit is a precise, scientifically verified process that accurately measures airborne pathogens and shows where the potential for onwards transmission of disease is greatest.

Lightico worked with ENVA, a provider of recycling and resource recovery solutions, with locations across the United Kingdom and Ireland. They operate across 4 core waste streams: **Hazardous Materials, Non-Hazardous Materials, Hydrocarbons** and **General Waste Recycling**. This highly labour intensive work relies heavily on their staff to maintain constant operation of their sites.

The challenge

The 24-hour operations of ENVA's waste processing site in Leicester, UK mean that welfare facilities are in constant use. Because of the nature of the work undertaken on site providing clean air through either mechanical or natural ventilation is difficult. Suppression methods are used to manage dust and other airborne particles, however, these focus on avoiding spread beyond the site, into the surrounding area. This means that air quality inside welfare spaces cannot be maintained when the outside air is potentially worse than the air inside. This constant use of the spaces means that social distancing is impractical. In addition to air contamination caused by the operation of the site, the potential for cross-transmission of airborne illnesses, such as influenza and COVID-19 would have a serious operational impact on the business. The welfare of staff and mitigation of loss in productivity is of high importance to the organisation.

The area had no provision for mechanical air handling with no fresh air intake or extraction installed. With the room in constant use and windows that are impractical to open, there was no solution for managing poor air quality or increased CO₂ levels.

This was evident in the CO₂ level readings and bacteria collections carried out during the "before" phase of the Air Quality Audit. Throughout the testing period, CO₂ levels were close to and in excess of 1500ppm. In addition to this, the levels of bacteria collected through the use of settle plates were so great as to be impossible to provide an accurate count. **The HSE states that "CO₂ levels consistently higher than 1500ppm in an occupied room indicate poor ventilation and you should take action to improve it."** Work conducted by a WHO expert group on assessment of health risks of biological agents in indoor environments suggested that total microbial load should not exceed 1000 CFU/m³. If higher than this, the environment is considered contaminated.

The solution

Following the completion of the Air Quality Audit, a lighting design was created that replaced the existing lighting configuration ensuring lighting levels were delivered in line with CIBSE guidelines. This ensured consistent coverage of CleanLight panels that Lightico calculated to deliver the equivalent of 3.07 ACH (air changes per hour).

Through the simple replacement of the existing lighting, the CleanLight panels are now providing clean air without the need for the business to invest in the installation and operation of filtered mechanical ventilation.



"We saw the case studies provided by Lightico so were confident that there would be an improvement in air quality when we installed CleanLight. However, we didn't expect the visible reduction shown in the air quality audit. CleanLight has transformed the space, making it cleaner and safer for our team members!"

Simon Haywood — Operations Manager, ENVA

The results

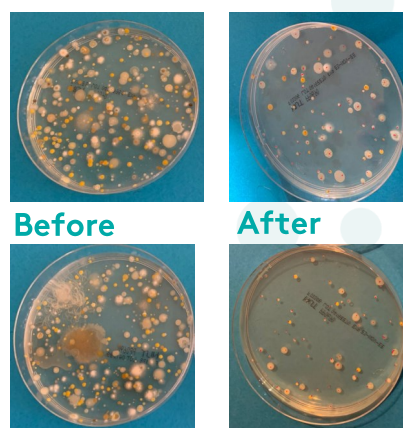
Following the installation of CleanLight the “after” stage of the Air Quality Audit was completed. From this, a significant improvement in air quality was identified when measuring both CO2 levels and bacteria counts. This not only will reduce the potential risk of the transmission of airborne pathogens but also means that the business will no longer need to act on high levels of CO2 causing a short-term impact on productivity.

By not being forced to install mechanical air handling to maintain air quality the business has saved both a large, upfront capital investment as well as an increase in operating costs and carbon emissions. Through the use of LED lighting, and replacing existing legacy light fittings, the total operational cost savings are estimated at over £370 per year, simply through the installation of 3 lights in an 8m x 4m room.

Plate location	Bacterial colony count (per plate) - CFU				% Diff	
	Before Cleanlight		After CleanLight		CFU	CFU/m ³
	CFU	CFU/m ³	CFU	CFU/m ³		
Location 1	Uncountable		70	743	N/A	
Location 2	Uncountable		55	584	N/A	
Location 3	Uncountable		71	753	N/A	
Average across the location	Uncountable		65	693	N/A	

Bacteria collected after CleanLight was installed are now below WHO contamination levels. CO₂ levels were also on average, 27% lower.

Time	Fixed CO2 Monitor	
	Before CleanLight	After CleanLight
Start	1,304 ppm	1,191 ppm
15 mins	1,401 ppm	1,011 ppm
30 mins	1,079 ppm	932 ppm
45 mins	1,473 ppm	878 ppm
60 mins	1,532 ppm	921 ppm
1 hr Av	1,357 ppm	986 ppm



The bigger picture

CleanLight from Lightico provides a solution where the installation of natural or mechanical ventilation is not practicable.

The starting point is always an accurate assessment—using our Air Quality Audit. Once the danger areas have been identified, CleanLight LEDs can be fitted quickly and take immediate effect. By killing airborne bacteria, varuses, pollutants, and odours with nothing but light, CleanLight provides, non-intrusive, instant and highly effective protection.

Switch CleanLight on, and switch on a new level of protection, with almost no disruption and no increase to your energy bill.