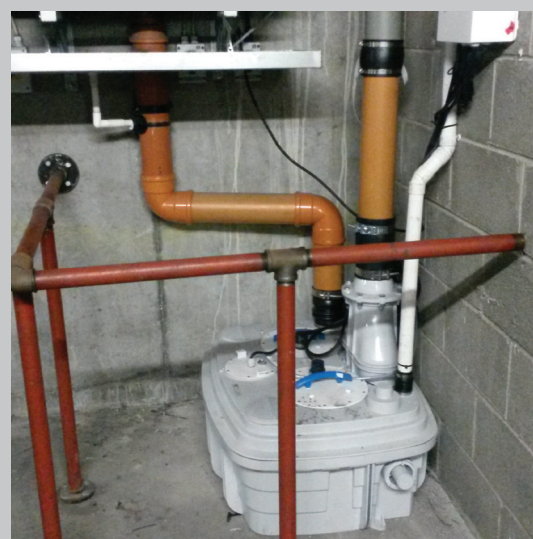


EDUCO GYM CASE STUDY

Sanicubic XL provides the solution for Dublin Gym



Sanicubic XL

A pumping station that was only launched by Saniflo at the back of 2014 has already proved successful in its very first installation in Ireland at the Educo Gym in Pearse Street, Dublin.

The highly popular international fitness centre based in Dublin city caters to hundreds of regular members and so when the existing pump – which services the gym's bathroom facilities - stopped working properly before Christmas it was imperative a swift replacement was found.

Step forward Sanirish who had just taken stock of the newest and biggest Saniflo in the range; a Sanicubic XL capable of pumping 40m³/hr of black waste water from multiple appliances. In the case of the Educo gym the pump had to be able to service 2 w.c's, 6 showers and 4 basins all from a basement in the car park beneath the building.

Gym owner Jamie Myerscough is very happy with how quickly the situation was resolved;

“The support from the team at Sanirish has been second to none. There was no stock of spares available in Ireland for our previous pump and we weren't able to wait, so we looked for an alternative. Our installer, Drain It, organised a very quick site visit and brought along the team from Sanirish to survey the application. It proved to be the perfect spot for the new XL, which was thankfully in stock and has proved to be perfect for our use. It has plenty of power to pump the waste from the appliances in to the unit and then out to the existing soil stack located above the gym floor level. We literally enquired on a Friday and we were back up and running on the Saturday thanks to the swift installation. We also know we can easily get spares for this unit which is clearly beneficial.”

The Sanicubic XL has a 120 litre tank capacity to ensure it can function efficiently when connected to several waste water sources at a time. It incorporates pioneering vortex technology which powerfully discharges waste through 80 or 100mm discharge pipes with the help of 2 x 2kW pumps. Easy and inexpensive to install the unit simply stands on the ground avoiding the need for costly excavations and it is also IP68 rated to give it protection against submersion in water.

The new unit offers plumbers and merchants the opportunity to provide powerful waste water solutions for large commercial projects where new facilities are required but traditional drainage sources aren't readily available.

Robin Jackman of Sanirish is keen to emphasize the help and support available from the team;

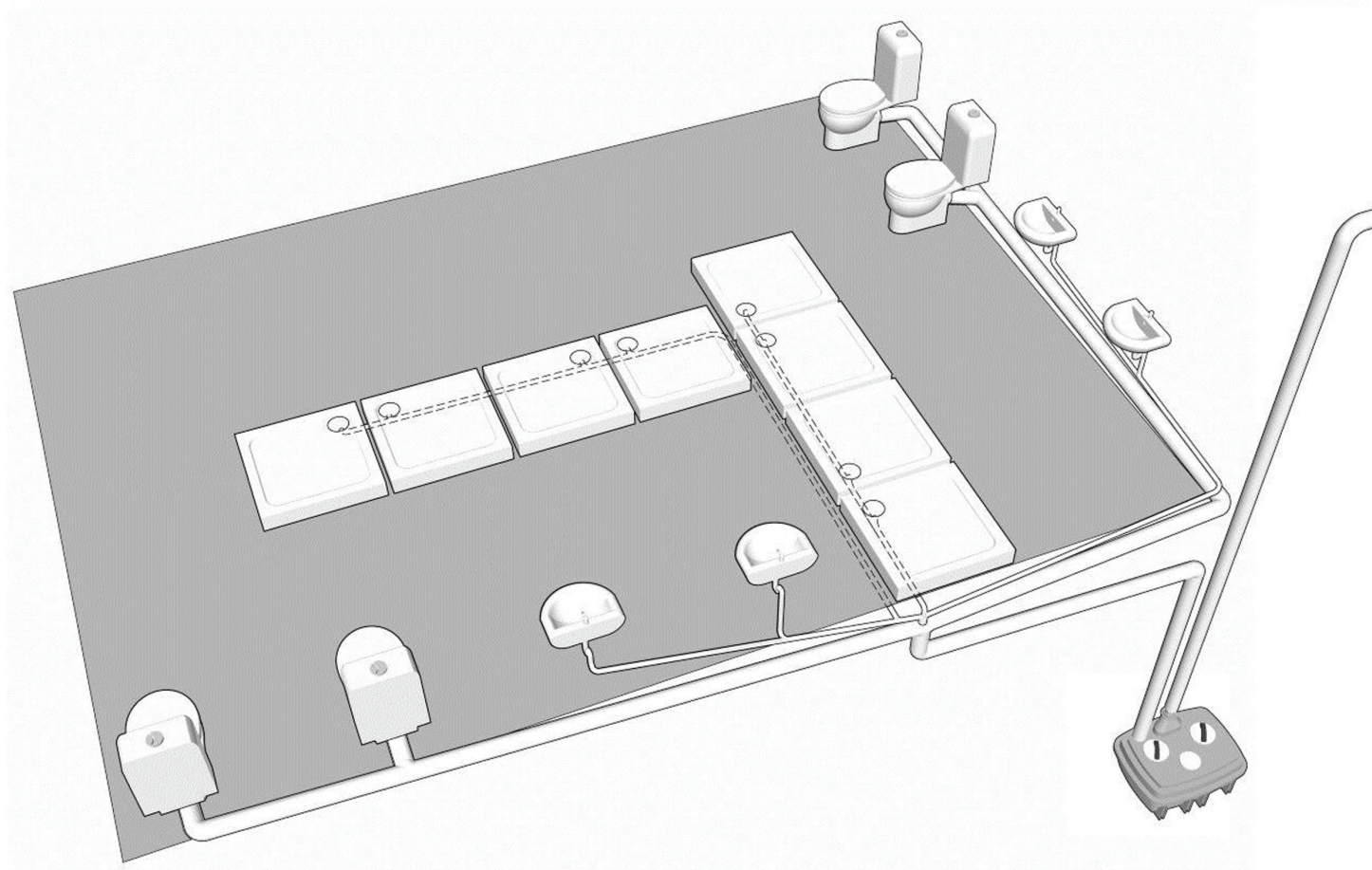
“Here at Sanirish we have a knowledgeable team who can provide technical advice before, during and after Saniflo installations. We carry a huge stock of reasonably priced spare parts too because we understand that continuity of service is highly important. There are tens of thousands of products reliably working throughout the UK and Ireland in a variety of sectors which highlights just how useful a Saniflo macerator pump can be when extra bathroom, kitchen or other facilities are required.”

For more information please see our website www.saniflo.ie or call the team on (046) 97 33077.

EDUCO GYM CASE STUDY

Sanicubic XL provides the solution for Dublin Gym

Plumbing Diagram



The waste from all appliances is discharged down to the Sanicubic XL located in the basement underneath the gym. It is then pumped up through an outlet pipe to street level where it joins the mains drains.