

INSTALLER CONNECTORS & JUNCTION BOXES

FOR LIGHTING, POWER, HVAC & MORE

Visit www.wago.com/gb

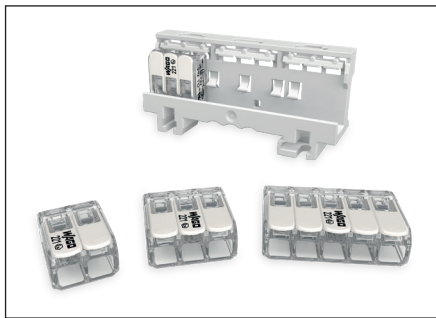
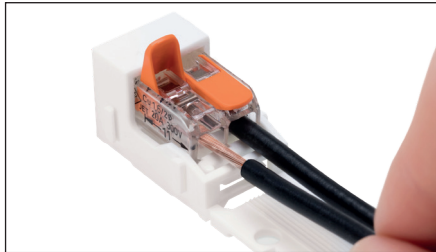
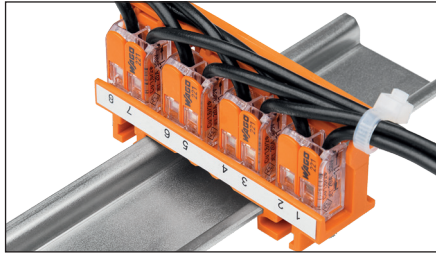


Search for WAGO Limited

#WeConnect

221 Series

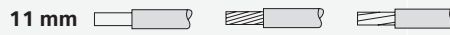
Compact Lever Connector / 4 & 6mm² / 32 & 41A



221 Series - 4mm²

Technical Data

0.2 - 4mm² solid & stranded
0.14 - 4mm² fine-stranded
450 V/4 kV/2
32 A



| Description. | Item No. | Box Unit. |
|-----------------------------------|----------------|-----------|
| transparent housing | | |
| <input type="radio"/> 2-conductor | 221-412 | 100 |
| <input type="radio"/> 3-conductor | 221-413 | 50 |
| <input type="radio"/> 5-conductor | 221-415 | 25 |

221 Series - 4mm²

Accessories

| | | |
|--|----------------|----|
| <input checked="" type="radio"/> Mounting Carrier | 221-500 | 10 |
| <input checked="" type="radio"/> Strain Relief Plate | 222-505 | 10 |
| <input type="radio"/> Angled DIN-rail adapter | 222-510 | 10 |

Carriers for screw mounting

| | | |
|-----------------------------------|----------------|----|
| <input type="radio"/> 2-conductor | 221-502 | 10 |
| <input type="radio"/> 3-conductor | 221-503 | 10 |
| <input type="radio"/> 5-conductor | 221-505 | 10 |

For all options please contact us.

221 Series - 6mm²

Technical Data

0.5 - 6mm² solid, stranded & fine-stranded
450 V/4 kV/2
41 A



| Description. | Item No. | Box Unit. |
|-----------------------------------|----------------|-----------|
| transparent housing | | |
| <input type="radio"/> 2-conductor | 221-612 | 50 |
| <input type="radio"/> 3-conductor | 221-613 | 30 |
| <input type="radio"/> 5-conductor | 221-615 | 15 |

221 Series - 6mm²

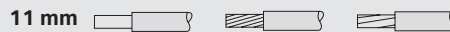
Accessories

| | | |
|--|----------------|----|
| <input checked="" type="radio"/> Mounting Carrier | 221-510 | 10 |
| <input checked="" type="radio"/> Strain Relief Plate | 222-505 | 10 |

Ex 221 Series - 4mm²

Technical Data

0.2 - 4mm² solid & stranded
0.14 - 4mm² fine-stranded
440 V (275V*)



| Description. | Item No. | Amp | Box Unit. |
|-----------------------------|----------------|------|-----------|
| transparent housing | | | |
| <input type="radio"/> 2-con | 221-482 | 24.5 | 100 |
| <input type="radio"/> 3-con | 221-483 | 32 | 50 |
| <input type="radio"/> 5-con | 221-485 | 32 | 25 |

Accessories

| | | |
|--|----------------|----|
| <input type="radio"/> Mounting Carrier | 221-501 | 10 |
|--|----------------|----|

Ex 221 Series - 6mm²

Technical Data

0.5 - 6mm² solid, stranded & fine-stranded
440 V (275V*)
37 A

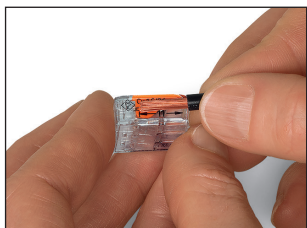


| Description. | Item No. | Box Unit. |
|-----------------------------------|----------------|-----------|
| transparent housing | | |
| <input type="radio"/> 2-conductor | 221-682 | 50 |
| <input type="radio"/> 3-conductor | 221-683 | 30 |
| <input type="radio"/> 5-conductor | 221-685 | 15 |

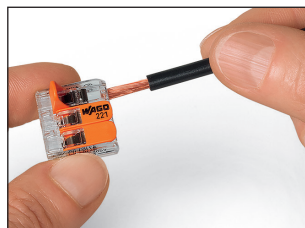
Accessories

| | | |
|--|----------------|----|
| <input type="radio"/> Mounting Carrier | 221-511 | 10 |
|--|----------------|----|

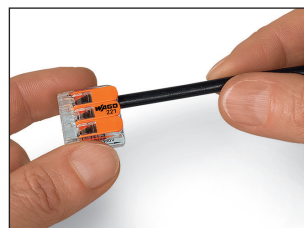
Operating



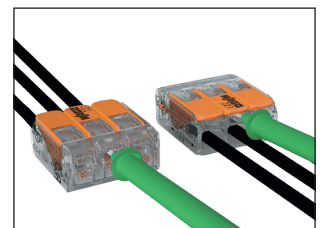
1. Strip the conductor



2. Lift lever, insert conductor, close lever!



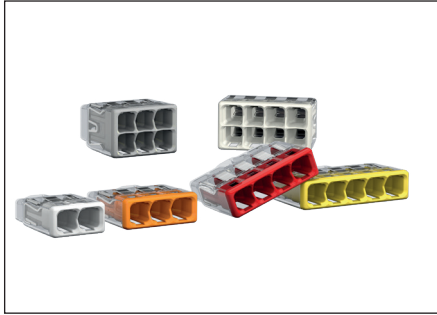
3. Done... To remove, lift the lever and pull out the conductor.



Two Test Ports, under the lever with the WAGO logo!

2773 Series

Push-In Connectors / 4mm² / 32A



2773 Series - 4mm²

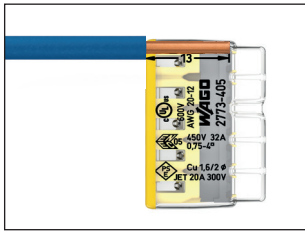
Technical Data

0.75 - 4mm² **solid**
 1.5 - 4mm² **stranded**
 450 V/4 kV/2
 32 A

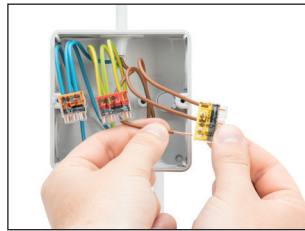
13 mm

| Description. | Item No. | Box Unit. |
|--|-----------------|-----------|
| transparent housing - colour coded cover | | |
| ○ 2-conductor | 2773-402 | 120 |
| ○ 3-conductor | 2773-403 | 100 |
| ○ 4-conductor | 2773-404 | 80 |
| ○ 5-conductor | 2773-405 | 60 |
| ○ 6-conductor | 2773-406 | 50 |
| ○ 8-conductor | 2773-408 | 40 |
| Accessories | | |
| Mounting Carrier | 2773-500 | 10 |

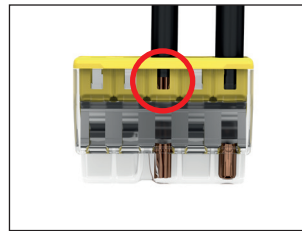
Operating



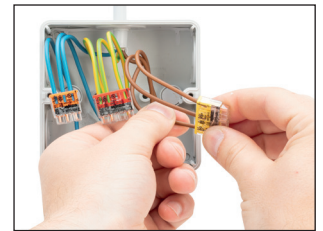
1. Strip the conductor



2. Insert the stripped conductor until it hits the back stop!



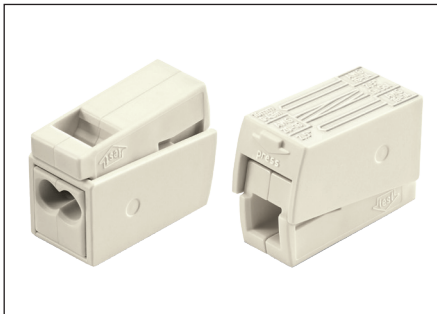
3. The transparent housing shows if conductors are fully inserted.



4. Removal: Hold solid conductor to be removed and twist alternately left and right while pulling the connector. Stranded wire: simply cut the wire close to the connector entry, strip it and insert into a new connector.

224 Series

Lighting Connectors / 2.5mm² / 24A



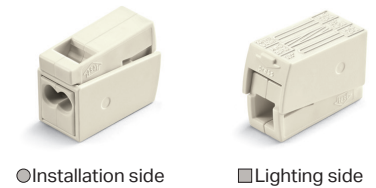
224 Series - 2.5mm²

Technical Data

○ **Installation side 1 - 2.5mm² solid**
 ■ **Lighting side 0.5 - 2.5mm² stranded fine-stranded**
 400 V/4 kV/2
 24 A

9 - 11 mm

| Description. | Item No. | Box Unit. |
|----------------|----------------|-----------|
| ○ 2-conductor | 224-101 | 100 |
| ○ 3-conductor | 224-112 | 100 |
| ○ 2-conductor* | 224-201 | 50 |

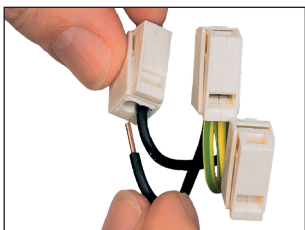


○ Installation side

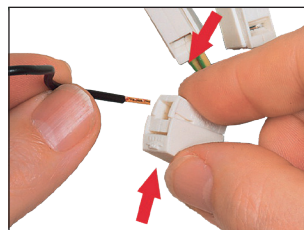
■ Lighting side

* Both sides of the 224-201 connector allows for 0.5 - 2.5mm² solid & fine-stranded.

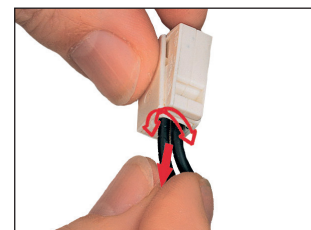
Operating



1. Strip both conductors 9 - 11mm. 2. Insert the solid conductor fully into the installation side.



3. To connect the lighting side squeeze together the housing and insert the conductor fully, then release to complete the connection.



4. To remove the installation side simply twist and pull the conductor at the same time. To remove the lighting side squeeze together the housing and pull out the conductor.

Selection Carry Cases

Installer Connectors

Selection Carry Cases

| Description. | Includes | Item No. | Pack Qty. |
|--|--|----------|-----------|
| 221 Series Compact Lever Case 85 pcs | 40 x 221-412 30 x 221-413 15 x 221-415 | 60281155 | 1 |
| 2773 Series L-BOXX Micro 113 pcs | 30 x 2773-402 30 x 2773-403 15 x 2773-404 20 x 2773-405 10 x 2773-406 8 x 2773-408 2 x 2773-500 | 887-800 | 1 |
| 221 Series Installer L-BOXX mini 235 pcs | 75 x 221-412 50 x 221-413 25 x 221-415 40 x 221-612 30 x 221-613 15 x 221-615 | 887-957 | 1 |
| 2773 Series Installer L-BOXX mini 380 pcs | 120 x 2773-402 80 x 2773-403 60 x 2773-404 50 x 2773-405 40 x 2773-406 30 x 2773-408 | 887-954 | 1 |
| 221 Series Installer L-BOXX large 410 pcs | 100 x 221-412 250 x 221-413 50 x 221-415 10 x 221-500 | 887-927 | 1 |
| 2773 Series Installer L-BOXX large 730 pcs | 240 x 2773-402 200 x 2773-403 80 x 2773-404 120 x 2773-405 50 x 2773-406 40 x 2773-408 | 887-922 | 1 |



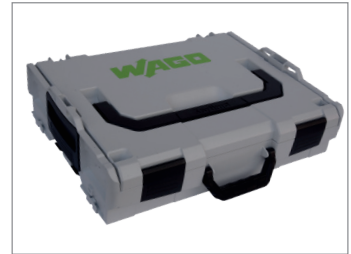
60281155



887-800



887-954



887-922



887-927

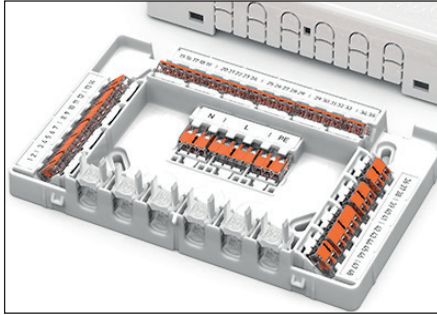


L-BOXX cases are stackable



887-957

The L60 Wiring Centre for 221 Series (up to 60 connections)

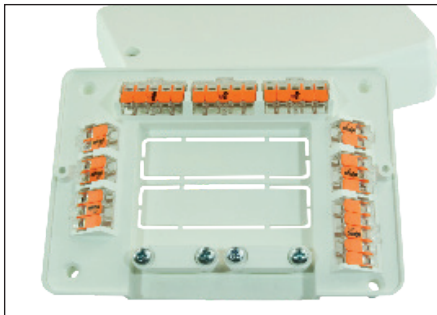


Connectors are not included

| L60 Wiring Centre |
|---------------------------------------|
| Technical Data |
| Dimensions: 225 x 145 x 46mm (LxDxH) |
| Cable sizes: 0.14 to 4mm ² |
| Ingress Protection: IP2X |
| Rating: 18A / 450V |
| BS EN 60670-22 Compliant |

| Description. | Item No. | Box Unit. |
|---|----------|-----------|
| <input type="radio"/> Large wiring centre | 207-4301 | 1 |
| Accessories | | |
| Spare clamps and marking | 207-9301 | 1 |
| Includes Cable Clamps & Marking Material | | |

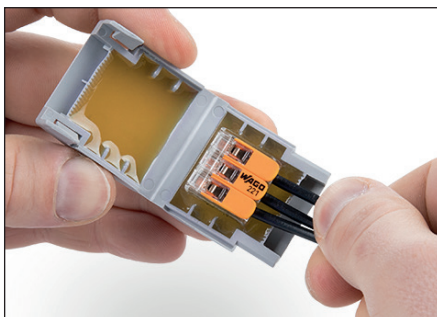
The mBox L32 Wiring Centre with 221 Series Connectors (up to 32 connections)



| mBox L32 Wiring Centre |
|---|
| Technical Data |
| Dimensions: 159 x 35 x 114mm (LxDxH) |
| Cable sizes: 0.14 to 2.5mm ² |
| Ingress Protection: IP2X |
| Rating: 25A / 450V |
| BS EN 60670-22 Compliant |

| Description. | Item No. | Box Unit. |
|---|----------|-----------|
| <input type="radio"/> mBox L32 | 60362958 | 1 |
| Includes 3 x 221-412, 2 x 221-413, 4 x 221-415, Y & S wiring diagram & blank for custom wiring. | | |

WAGO Gel Enclosures IPX8



Connectors are not included

| WAGO GEL Boxes |
|---|
| For max. 4mm ² connectors |
| Dimensions: 17.8 x 33.6mm (HxD) |
| Size 1 32mm Size 2 45.9mm Size 3 52.7mm (W) |
| For max. 6mm ² connectors |
| Dimensions: 21.3 x 40.1mm (HxD) |
| Size 1 32mm Size 2 45.9mm Size 3 52.7mm (W) |

| Description. | Item No. | Box Unit. |
|--------------------------------------|----------|-----------|
| For max. 4mm ² connectors | | |
| Size 1 for 221 & 2773 | 207-1331 | 4 |
| Size 2 for 221 & 2773 | 207-1332 | 4 |
| Size 3 for 221 & 2773 | 207-1333 | 3 |
| For max. 6mm ² connectors | | |
| Size 1 for 221 | 207-1431 | TBA |
| Size 2 for 221 | 207-1432 | TBA |
| Size 3 for 221 | 207-1433 | TBA |

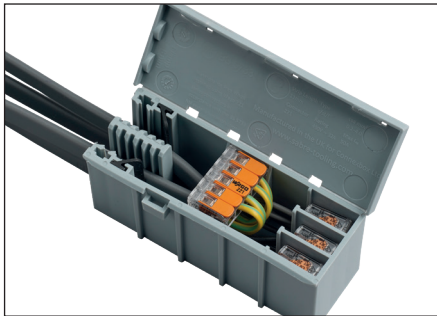
Benefits

- Fast application – ready for direct, on-site deployment
- Unlimited shelf life
- Ease of use
- Exceptional versatility – made of silicone-free gel for use in all industries
- Safe application – VDE-tested and IPX8-certified

| | Series 221-4xx / 221-6xx | | | | | | Series 2773-4xx | | | | | |
|-----------------|--------------------------|-----|-----|-----|-----|-----|-----------------|-----|-----|-----|-----|-----|
| | 412 | 413 | 415 | 612 | 613 | 615 | 402 | 403 | 404 | 405 | 406 | 408 |
| 207-1331 | 1 x | 1 x | - | - | - | - | - | 1 x | 1 x | - | 1 x | 1 x |
| 207-1332 | 2 x | - | 1 x | - | - | - | - | 2 x | 1 x | 1 x | 1 x | 1 x |
| 207-1333 | 3 x | 2 x | - | - | - | - | 3 x | 2 x | 2 x | 1 x | 1 x | 1 x |
| 207-1431 | - | - | - | 1 x | 1 x | - | - | - | - | - | - | - |
| 207-1432 | - | - | - | 2 x | - | 1 x | - | - | - | - | - | - |
| 207-1433 | - | - | - | 3 x | 2 x | - | - | - | - | - | - | - |

WAGOBOX 221-4 (MF approved)

for 221 Series



Connectors are not included

WAGOBOX

Technical Data

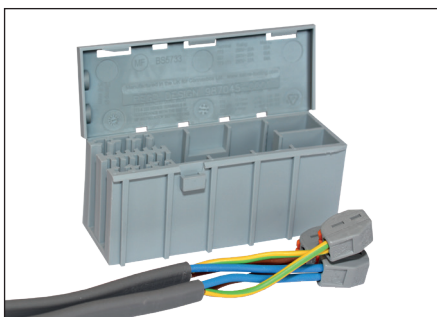
Dimensions: 108 x 39 x 44mm (LxDxH)
Cable sizes: 0.08 to 6mm²
Ingress Protection: IP2X

BS EN 60670-22 Compliant
& BS 5733 MF

| Description. | Item No. | Box Unit. |
|-----------------|----------|-----------|
| ● 221-4 WAGOBOX | 60413514 | 1 |
| ● 221-4 WAGOBOX | 60413516 | 10 |
| Accessories | | |
| Mounting Button | 51009130 | 10 |

WAGOBOX (MF approved)

for 222 & 773 Series



Connectors are not included

WAGOBOX

Technical Data

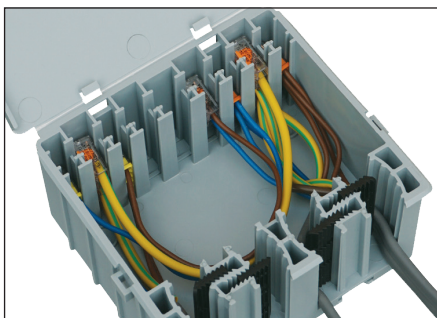
Dimensions: 108 x 39 x 44mm (LxDxH)
Cable sizes: 0.08 to 6mm²
Ingress Protection: IP2X

BS EN 60670-22 Compliant
& BS 5733 MF

| Description. | Item No. | Box Unit. |
|-----------------|----------|-----------|
| ● WAGOBOX | 51008291 | 1 |
| ● WAGOBOX | 51008319 | 10 |
| Accessories | | |
| Mounting Button | 51009130 | 10 |

WAGOBOX XL (MF approved)

for 221 Series



Connectors are not included

WAGOBOX

Technical Data

Dimensions: 115 x 126 x 55mm (LxDxH)
Cable sizes: 0.14 to 4mm²
Ingress Protection: IP2X

BS EN 60670-22 Compliant
& BS 5733 MF

| Description. | Item No. | Box Unit. |
|-----------------|----------|-----------|
| ● WAGOBOX XL | 60339091 | 1 |
| Accessories | | |
| Mounting Button | 51009130 | 10 |

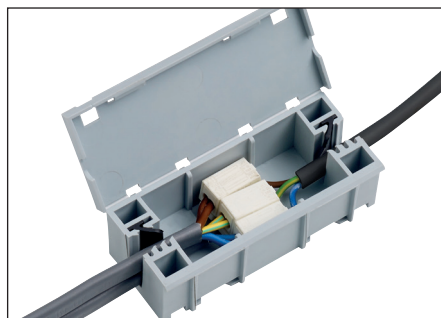
Suitable connectors for MF applications and ratings

| Connector Series | Max Current Rating | Max Cable Rating | Max Aggregate Current (max I_{ag}) | Junction Box |
|-------------------------|--------------------|------------------|---------------------------------------|--------------------|
| 221 (4mm ²) | 20A | 4 | 50A** | WAGOBOX 221-4 & XL |
| 222 | 20A | 2.5 | 50A** | WAGOBOX |
| 773 | 20A | 2.5 | 50A** | WAGOBOX |
| 773-173 | 32A | 6 | 64A** | WAGOBOX |

** 50A per single side max aggregate current (I_{ag}) for XL & XLA.
MF instructions are included within the product packaging.

WAGOBX Light

for 224, 260 & 294 Series



Connectors are not included

WAGOBX Light

Technical Data

Dimensions: 95 x 39 x 29mm (LxDxH)
Cable sizes: 0.08 to 2.5mm²
Ingress Protection: IP2X

BS EN 60670-22 Compliant

| Description. | Item No. | Box Unit. |
|-----------------|----------|-----------|
| ● WAGOBX Light | 51303208 | 1 |
| ● WAGOBX Light | 51257303 | 10 |
| Accessories | | |
| Mounting Button | 51009130 | 10 |
| Thumb Tool | 51302076 | 1 |

WAGOBX Capsule

IP68



WAGOBX Capsule

Technical Data

Dimensions: Lid diameter 92mm, height 122mm, body width 85mm
Gland sizes: M16, M20
Cable sizes: 0.08 to 6mm²
Ingress Protection: IP68

BS EN 60529

Use in conjunction with suitable IP rated glands, (not sold by WAGO).

| Description. | Item No. | Box Unit. |
|--------------------|----------|-----------|
| ○ WAGOBX Capsule | 51312608 | 1 |
| ● WAGOBX Capsule | 51312606 | 1 |
| ● WAGOBX Capsule | 51312607 | 1 |
| Accessories | | |
| ● Capsule bracket | 51312590 | 1 |
| ● Capsule bracket | 51312594 | 1 |
| Capsule lid plate | 51312602 | 1 |
| Capsule side plate | 51312603 | 1 |
| Thumb Tool | 51302076 | 1 |

Abox 060 Enclosure

with 221 Series compact lever connectors



Abox 060 enclosure with 221 Series

Technical Data

Dimensions: 110 x 110 x 67mm (LxDxH)
Cable sizes: 0.14 to 4mm²
Ingress Protection: IP2X
Rating: 32A / 450V

BS EN 60670-22 Compliant

| Description. | Item No. | Box Unit. |
|---------------|----------|-----------|
| ● Polystyrene | 60290788 | 1 |

Includes IP65 Abox with cable entry holes, mounting bracket for the 221 Series connectors, IP54 adapters / M25 blanking plug / fixing covers & 5 x 221-413.

Abox 100 Enclosure

with TOPJOB® S Push-in terminal blocks



WAGOBX Light

Technical Data

Dimensions: 95 x 39 x 29mm (LxDxH)
Cable sizes: 0.5 to 6mm²
Ingress Protection: IP2X
Rating: 41A / 800V

BS EN 60670-22 Compliant

| Description. | Item No. | Box Unit. |
|-----------------|----------|-----------|
| ● Polystyrene | 51004457 | 1 |
| ● Polycarbonate | 51004458 | 1 |

Includes IP65 Abox with cable entry holes, Mounting bracket for the TOPJOB® S terminals, IP54 adapters / M32 blanking plug / fixing covers, 10 x 2006-1201 terminals, 1 x end plate & 2 x end stops (mounted on T35 Din Rail).