

ZINK

Solar Powered Security Light with Integral PIR

User Instructions

Please take time to read this leaflet carefully and retain it for future reference.

- This solar light comprises a solar cell and an LED light source. Light from the sun charges the unit during the day and at night the energy stored is used to power the light.
- The light will remain on for 25-30 seconds each time the PIR is activated.
- No other power source or connections are required.
- **An on/off switch is located on the side of the main body.**
Turn on to activate light and PIR function.

Contents - Check the pack to make sure you have all the parts listed.

- 1 x solar powered light
- 2 x mounting screws and wall plugs

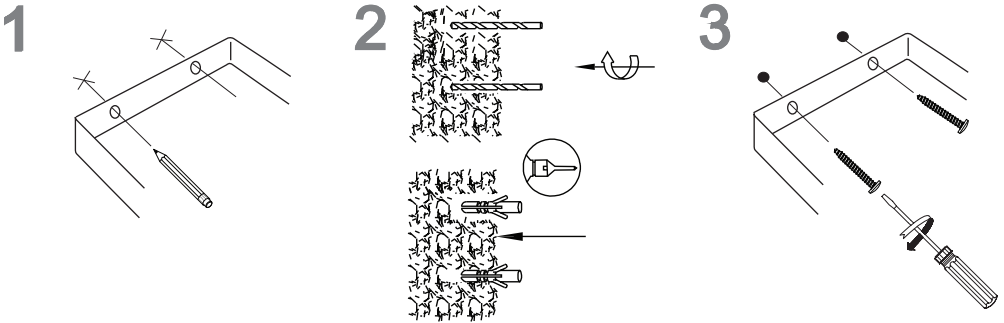
Fixing Instructions

1. Attach the mounting bracket to the wall using the mounting screws provided. (see Siting instructions below.)
2. Hook the light onto the mounting bracket.

Siting Instructions

- Solar lights are designed for use outside in an open (un-shaded) location.
- The solar panel should be located where sunlight can fall directly on the unit. Shadows from buildings, trees, walls, hedges or similar should be avoided, as these will reduce the amount of light the solar panel can absorb affecting your light's operational run time.
- Avoid locations where light from other sources will fall on the panel at night (street lights, floodlights etc.) as this may prevent the light from turning on.
- The units can be left outside in the rain but should not be exposed to water jets or immersed in any way.
- For optimum life, the solar panel should be protected from weather extremes such as snow or frost.
- Do not position near direct sources of heat such as patio heaters or barbecues.
- Do not position near to products that send radio waves, as this may affect the lamp operation.
- Ensure the location can take the full weight of the wall light.
- For best results install at a height of between 2-4 metres from the ground and such that motion for detection is across (rather than towards) the PIR beam.
- The PIR has an operational range of between 3-5 metres.

Mounting Diagram



Care and Use

- Periodically wipe clean with a soft dry cloth. Never use scourers, abrasives or chemical cleaners.
- The solar panel lens should be cleaned periodically to ensure its efficiency is not reduced by dust and dirt.
- Some condensation may form inside the lights or solar panel in cold conditions. This is normal and will not affect the performance of your lights.
- **An on/off switch is located on the side of the main body.**
Turn on to activate light and PIR function

Charging the light.

- The small LED light above the PIR indicates if the light is charging/fully charged.
Green - charging
Red - full charged
No light - not charging



This product should be disposed of responsibly at the end of its life. Please recycle where facilities exist. Check with your Local Authority or Retailer for recycling advice (Waste Electrical and Electronic Equipment Directive)

HELPLINE

If you receive this item with parts broken or missing, please telephone:

0333 0050077

Please have ready your name, address, tel. no., product reference, where purchased and parts required. An answering service is in operation outside office hours and during busy periods.

We regret that we are unable to give advice on internal house wiring.

Cascade Holdings Ltd, Gorse Mill, Gorse Street, Chadderton, Oldham. OL9 9RJ

UK
CA

EU Authorised Representative: Authorised Rep Compliance,
Ground Floor, 71 Lower Baggot Street, Dublin, Ireland,
D02P593.

CE