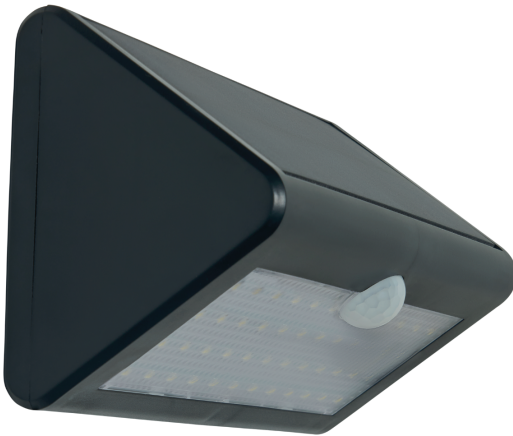


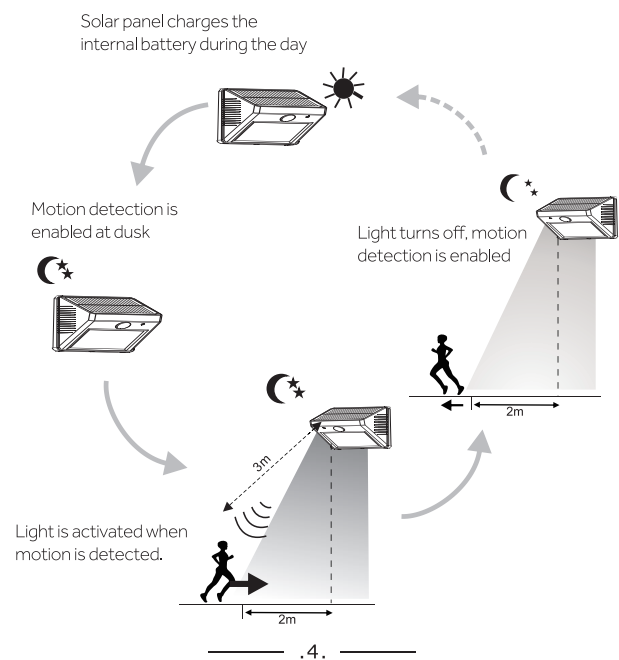
# Dawdon Solar LED Wall Lantern with PIR

Item ref: 42042

## User Manual



- Suitable for OUTDOOR USE ONLY - IP44 rated
- Easy to install, no wiring necessary
- Recharges batteries using solar energy
- Automatically charges in sunlight



### Installation

- When using for the first time, the solar light needs to charge in full sunlight for 3 days. Remove the protective film from the solar panel and allow the light to charge in the 'off' position. Once charged, turn the light on. The battery needs to be fully charged/discharged once per month. For best performance and battery life, do not store for prolonged periods.
- Ensure the light is positioned in a bright sunny location where it will receive maximum sunlight. Ideally, in a position where it is free from cover and not in a shaded area. Lack of sunlight will affect charge times and operation.
- Avoid other light sources such as street lamps that may cause the solar lights to flicker on and off.
- Secure the wall bracket into a suitable location.
- Assembling the lamp:
  1. Using the screws and Rawl plugs supplied, hang the light in the desired location.
  2. Allow the light to charge for 3 days (light on the off position)
  3. Turn the light on once charged.

### Activating the Lamp

Using the power button: First push - standard brightness, second push - 50% brightness, third push - lamp turns off.

The light activates when motion is detected and will turn off approx 25 seconds after motion ceases.

## Warnings

- Suitable for OUTDOOR USE ONLY
- DO NOT expose this product to direct heat, flames or immerse in water.
- The LED's are non-replaceable
- Please retain this information for future reference.

## Battery instructions

- DO NOT dispose of in fire.
- Battery MUST be recycled or disposed of properly.
- 2pc 3.7V 2000 mAh Li-ion rechargeable battery.

## Cleaning

- If the solar panel gets dirty the charging capacity will be reduced. Clean panels occasionally with a soft damp cloth.

## Troubleshooting

### Light is flashing

Solution: The battery is low on charge. Turn off the light and allow to charge for 3 days before turning the light back on.

### Night runtime is short

Solution: The battery is not fully charged. Install the solar light in an area where it can receive the maximum amount of direct sunlight.

### Light does not turn on at night

Solution: The location is too close to other light sources. Relocate the light away from other light sources.

Made in China for ZINK, Gorse Mill, Gorse Street, Oldham, OL9 9RJ, U.K.

Helpline: 0333 005 0077, Mon-Fri, 9am-5pm.

UK MANUFACTURER / IMPORTER  
CASCADE HOLDINGS LTD.  
GORSE MILL  
GORSE STREET  
OLDHAM,  
UNITED KINGDOM  
OL9 9RJ



EU AUTHORISED REPRESENTATIVE:  
AUTHORISED REP COMPLIANCE  
GROUND FLOOR  
71 LOWER BAGGOT STREET  
DUBLIN  
IRELAND  
D02 P593



Disposal: The "Crossed Wheelie Bin" symbol on the product means that the product is classed as Electrical or Electronic equipment and should not be disposed with other household or commercial waste at the end of its useful life. The goods must be disposed of according to your local council guidelines.