




# Technical Data

Supply Voltage:	220-240 V~ 50 Hz The electrical supply to the unit should be provided by connecting to a circuit protected by a fuse or miniature circuit breaker suitable for the electrical rating of the unit. Any plug, sockets and switches intended for use outdoors must have a water IP rating as good as, or better than, the protection rating of this unit.
Bulb Type:	20 X 10W Max. E27 LED only GLS bulbs bulbs not included.
	Conformity with all relevant EC and UK Directive requirements.
	Class 2 product, This item is double insulated, this fitting must not be earthed.
<b>IP44</b> (When bulb fitted)	Protects against solid objects over 1mm and sprays from all directions. Limited ingress permitted.
	Waste electrical products should not be disposed of with household waste. Please recycle where facilities exist. Check with your Local Authority or local store for recycling advice.

## Helpline

If you receive this item with parts broken or missing, please telephone: 0333 0050077

Please have ready your name, address, tel. no., product reference, where purchased and parts required. An answering service is in operation outside office hours and during busy periods. We regret that we are unable to give advice on internal house wiring.

Cascade Holdings Ltd, Gorse Mill, Gorse Street, Chadderton, Oldham. OL9 9RJ

EU Authorised Representative: Authorised Rep Compliance,  
Ground Floor, 71 Lower Baggot Street, Dublin, Ireland,  
D02P593



ZN 41106

## Hardy 20 Light Festoon Instruction Manual



# READ ALL INSTRUCTIONS

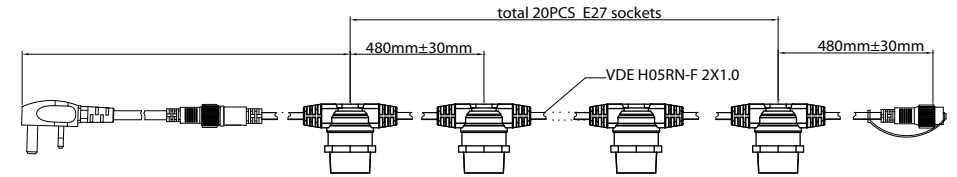
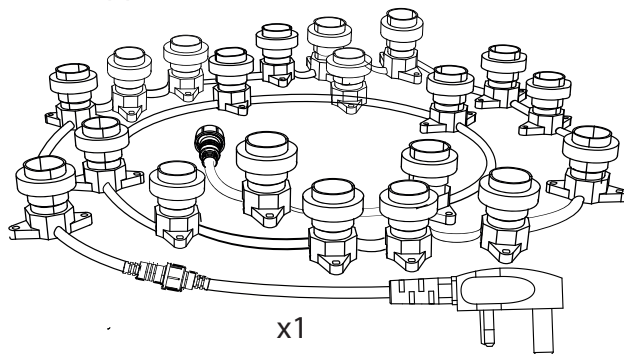
## Safety

- These instructions are for your safety. Please read through them thoroughly prior to installation and retain them for future reference.
- Always organise cables and extension leads so that they will not be a trip hazard
- The external flexible cable or cord of this luminaire cannot be replaced; If the cord is damaged, the luminaire shall be destroyed.
- Check the pack and make sure you have all of the parts listed.
- Remove all packaging, wrap etc. from the product.
- Decide on the appropriate location for your product.
- IP44 product: Protects against solid objects over 1mm and sprays from all directions. Limited ingress permitted.
- Always refer to the installation drawing for the orientation of the product.
- Never put anything on the product or hang anything on any part of this product.
- When the product does not light after installation:
  - > Ensure there is no electricity failure
  - > Ensure all the connections are secured
- Always disconnect the product from mains at least 10 minutes allowing to cool down before any maintenance or adjustment.
- CAUTION: Do not stare at the operating LED light source.
- Do not use this product coiled up or when still in its packaging.
- Do not connect to power source until correctly located in desired position.
- Always disconnect from the power source before relocating this item.
- Do not extend by connecting to other products

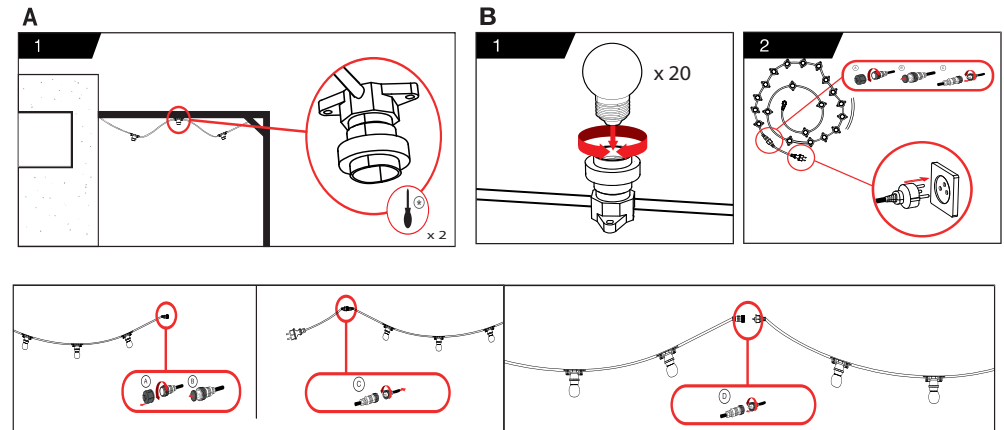
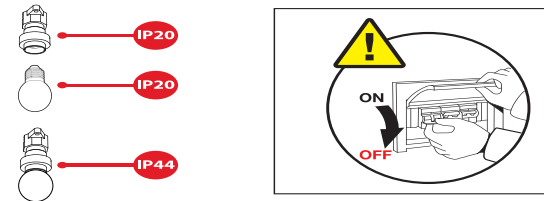
## Cleaning care

- The lamp can be cleaned with a clean dry cloth. Do not immerse it in water.
- Always switch off the supply before cleaning

## Parts Supplied



## Installation Instructions



The electrical supply to the unit should be provided by connecting to a circuit protected by a fuse or miniature circuit breaker suitable for the electrical rating of the unit. Any plug, sockets and switches intended for use outdoors must have a water IP rating as good as, or better than, the protection rating of this unit.

Images for illustration purposes only – Product may differ slightly from the one shown