

Rechargeable LED Floodlight

Installation Instructions

Page 1



For models: LEDFL10YR, LEDFL20YR

Please read these instructions carefully before use.

Leave a copy for the user/maintenance engineer for future reference.

Specification

- 10W / 20W
- 500 / 1000 Lumen output
- 6000K Colour temperature
- 500 Charge / discharge cycles life expectancy
- Two year guarantee
- Dimensions:

10W: L: 250 x W: 115 x D: 115mm

20W: L: 300 x W: 159 x D: 159mm

Wattage	Charging Time	Operating Time
10W	2 Hours	Up to 3.5 Hours
20W	3 Hours	Up to 2.5 Hours

- DO NOT tamper with battery wiring.
 - DO NOT puncture or damage the batteries.
 - DO NOT use the batteries that appear damaged.
 - DO NOT immerse or expose the batteries in water.
 - DO NOT alter or modify the batteries.
 - DO NOT attempt changing the batteries in any manner other than that prescribed in these instructions.
 - DO NOT dispose of the battery in fire or water.
- Failure to comply may result in personal injury or property.

Note

LED indicator (On charger).

Charging: Indicator LED flashes red and green.

Fully charged: Indicator LED turns to green.

Working: Indicator LED turns to green.

All the lamps are full charged before delivery.

Please use the charger provided with the lamp.

Please do not turn on the light when charging.

Please do not use a modified or damaged charger.

Please do not leave the lamp on charge over 24 hours.

Please do not disassemble the lamp.

Please recharge the lamp every six months when in stock.

Warning

This device utilises a rechargeable Lithium-ion battery that can rupture, ignite and cause serious injury if used improperly. Please check the following safety rules

- DO NOT place batteries and devices in fire or high temperature environment.

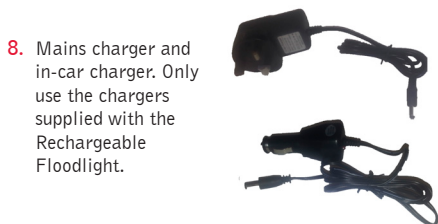
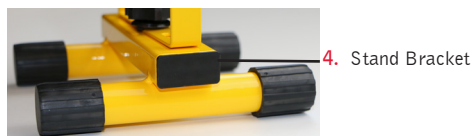
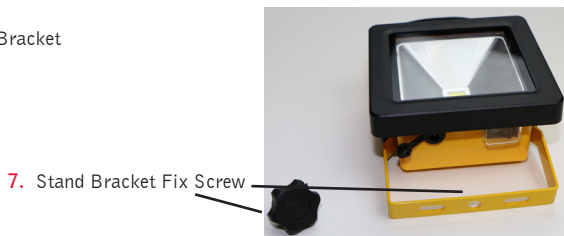
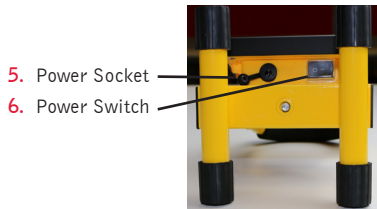
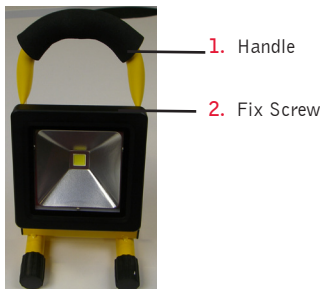
Rechargeable LED Floodlight

Installation Instructions

Page 2



For models: LEDFL10YR, LEDFL20YR



CE Product complies with all relevant European standards

RoHS

PRN WEE/BJ1331XR



Product is suitable for mounting on flammable material

Guarantee

This product is guaranteed for a period of two years from the date of purchase. The guarantee is invalid in the case of improper use, tampering, removal of the Q.C. date label, installation in an improper working environment or installation not according to the current edition of the I.E.E. Wiring Regulations (BS7671). The guarantee is also invalidated if the luminaire has been Mega tested. Should this product fail during the guarantee period it will be replaced free of charge, subject to correct installation and return of the faulty unit. We do not accept responsibility for any installation costs associated with the replacement of this product. We reserve the right to alter specifications without prior notice.