



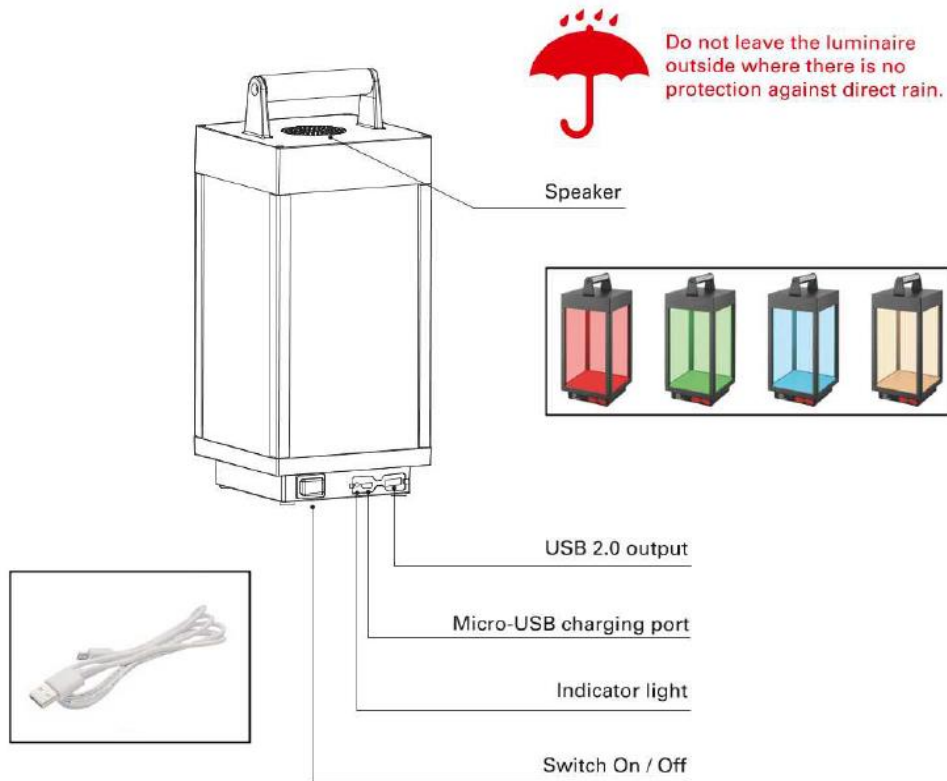
®

Description – Orno Portable Lantern 2



# Installation Instructions

Luminaire Code(s) – **AORNLED/PL2**



USB 2.0 output: Allows a smartphone to be charged. This, however, affects the battery life of the fixture.

Download the application from the QR code below.

- Google drive and install the application "hPlay Light" (for Android 4.0 and up)
- App Store and install the application "hPlay Light" for iOS system



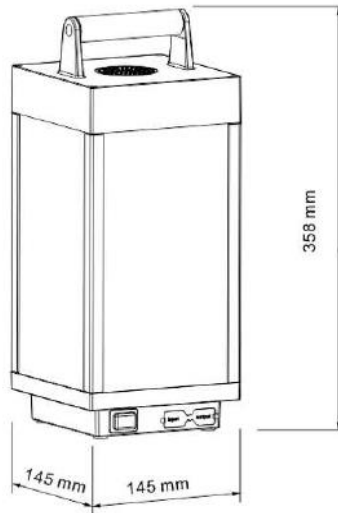
1. This luminaire contains no serviceable parts.
2. When the LED light source reaches end of life the whole luminaire should be replaced.



### Disposal of Electronic Equipment WEEE Directive 2012/19/EU

This product falls within the scope of the Waste Electrical & Electronic Equipment Directive (WEEE), which means the product should not be disposed of as normal household waste. Ensure that this luminaire and lamp is disposed of in accordance with the WEEE Directive. Contact a local Council Waste Dept. Local Amenity Site, or the DTI for further information.

**RoHS** - All components and materials used in this product are RoHS 2002/95/EC compliant.



**SPECIFICATIONS:**

1M MICRO USB LINE

6W | RGB + WHITE LED | 200 lm | LOUDSPEAKER

24 WHITE LED SMD 2835 + 28 RGB LED SMD 5050

3,7V / 7800mAh LI-ION BATTERY

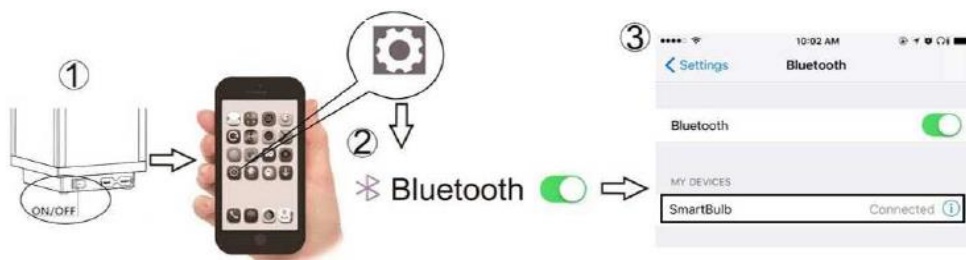
Operating frequency: 2400-2483.5MHz

Max Transmitter Power: 1.23mW

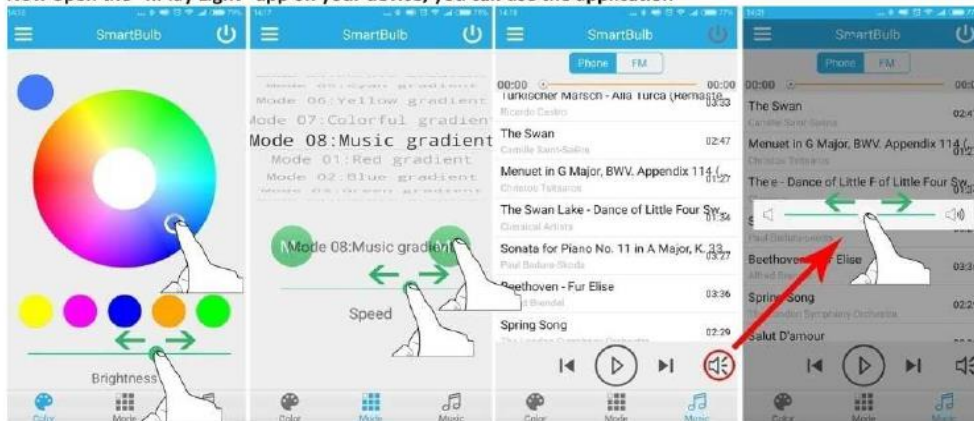
Before Operation:

1. Turn on the Lantern.
2. Open the settings on your Android or iOS device and turn on the Bluetooth.
3. Follow the instructions and connect the Bluetooth to "SmartBulb".

Android/iOS



Now open the "hPlay Light" app on your device; you can use the application




Please ensure that the Lantern is charged before operation, the LED will flash until the fully charged.

The LED battery indicator will glow RED when the battery is low.



1. This luminaire contains no servieable parts.
2. When the LED light source reaches end of life the whole luminaire should be replaced.



**Disposal of Electronic Equipment WEEE Directive 2012/19/EU**  
 This product falls within the scope of the Waste Electrical & Electronic Equipment Directive (WEEE), which means the product should not be disposed of as normal household waste. Ensure that this luminaire and lamp is disposed of in accordance with the WEEE Directive. Contact a local Council Waste Dept. Local Amenity Site, or the DTI for further information.  
**RoHS** - All components and materials used in this product are **RoHS 2002/95/EC** compliant.