

**SW6 - SHAKE PROOF WASHER**

**Description :**

SW6 - M6 Internal Tooth Shakeproof Washer

**Finish :**

BZP

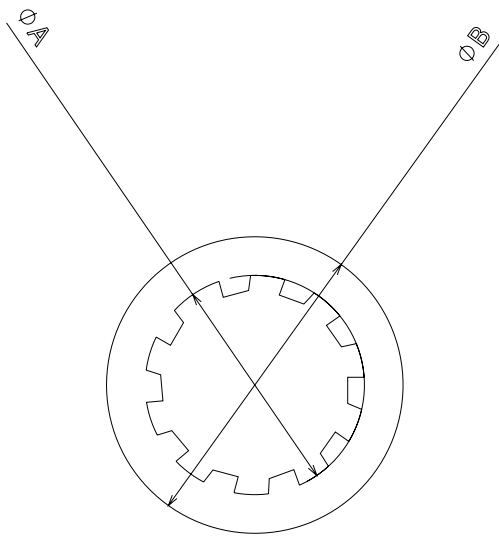
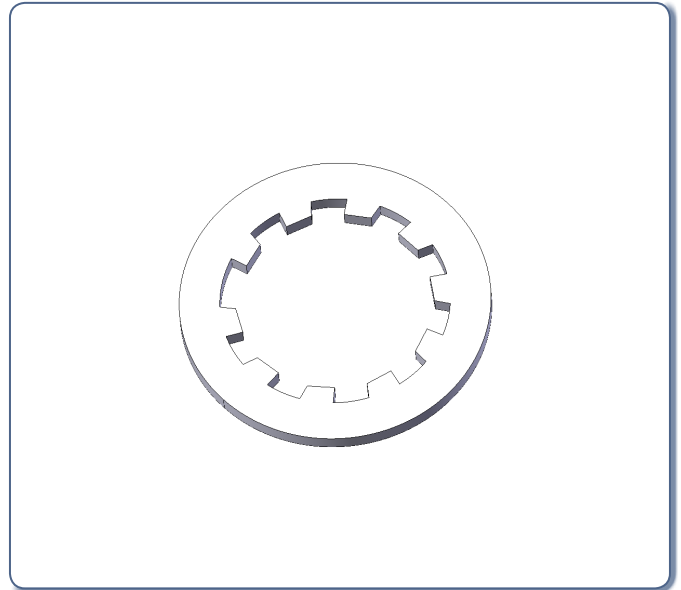
**Material :**

Steel

**Packaging :**

Packed in qty 100

**Additional Notes :**



Front view

	A	B
SW6	M6	10.85
SW8	M8	14.8
SW10	M10	17.8
SW12	M12	21.5
SW16	M16	25.7
SW20	M20	32.7
SW25	M25	39.15
SW32	M32	51.5

All Dimensions in mm (unless otherwise stated)

© Metpro Ltd 2015 - This Document is provided for Information Purposes Only and is Subject to Change Without Notice. Metpro Ltd makes No Warranty, express or implied, with this Document or the Information contained within.

**Tel : 0121 552 2100 - Fax : 0121 552 3363 - Email : sales@metpro.co.uk**