

RF Control

Push the plug into the mains socket and switch on.

Slide the battery cover off the RF controller and fit the battery observing the correct polarity markings.

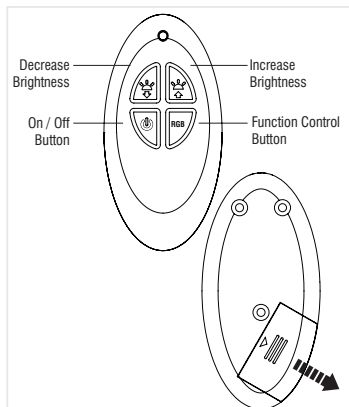
Press the On / Off button on the RF controller. The red LED should light at the top, and the signal LED should light on the power supply.

Push the RGB button to switch between the different colours. There are seven individual colours and then two variable modes.

The fixed colour sequence is yellow, cool blue, red, green, blue, purple and light blue.

There are two variable modes. One switches between all seven colours and the other fades between them.

The sequence will repeat from the start.



Technical data

Supply Voltage: 220-240V~, 50Hz | Output: 12V DC 15W Max. Constant voltage

Bulb 59136----10 x 0.75W LED module, RGB

Type: 59138----10 x 1.5W LED module, RGB

The LED module of this luminaire is not replaceable, when the LED module reaches its end of life the whole luminaire shall be replaced



Conformity with all relevant UKCA Directive requirements.

Conformity with all relevant EC Directive requirements.



The power supply is Double Insulated and does not require connection to an Earth circuit.



Class III product - designed to be supplied from a SELV (Separated or Safety Extra-Low Voltage) power source.



Waste electrical products should not be disposed of with household waste. Please recycle where facilities exist. Check with your Local Authority or local store for recycling advice.



This product is suitable for dimming with remote control.



This product is rated at IP67.

Care and Safety

We recommend cleaning with a soft dry cloth. Do not use solvents or abrasive cleaners as these could damage the finish.

To prolong the life and condition of the product, it is recommended that periodically it is cleaned using a soft cloth followed by the application of a light coating of oil, such as WD40.

Do not clean the units with a pressure washer.

Live Voltages may be present in the transformer even when turned off or when completely disconnected.

For your safety, always switch off the supply before maintaining the system.

Instruction manual

IkonPRO RGB LED Kit

59136, 59138



V7 21/05/2024

UK Manufacturer: BH17 7BY

EU Manufacturer: Brilliant AG,
Brillantstrasse 1, D-27442 Gnarrenburg

saxby
lighting

www.saxbylighting.com

saxby
lighting

Thank you for purchasing this light fitting. Please read the instruction carefully before use to ensure safe and satisfactory operation of this product. Please retain these instruction for future reference.

Warning

 The power supply is Double Insulated and does not require connection to an Earth circuit.

The LED units are Safety Extra Low Voltage and must not be earthed.

Please read these instructions carefully before commencing any work

This unit must be fitted by a competent and qualified electrician.

Install in accordance with the IEE Wiring regulations and current Building Regulations.

Check the pack and make sure you have all the parts listed.

This system operates at Safety Extra Low Voltage (12V), via a transformer. Never connect the light fittings directly to the mains without using a transformer.

The mains plug must be situated indoors (e.g. house, garage, shed) in order to protect it from the elements.

Do not exceed the driver load. For 59136 The supplied driver can operate up to a maximum of 20 LED heads; For 59138, the supplied the supplied driver can operate up to a maximum of 10 LED heads.

Always disconnect the plug from the mains when installing or maintaining this system.

This system contains non-replaceable parts and cannot be serviced. If damage occurs the part should be scrapped.

The LED heads and driver are rated at IP67. They are suitable for installation in very wet areas, but must not be permanently submerged. The driver must not be installed directly in the soil.

Rated maximum surface temperature is 80 °C.

The resistant to static loads is 5KN for 1 minute. Do not let plants grow close to the lamp. This product is not suitable for drive-over, carriageways, parkings, etc.

Waste electrical products should not be disposed of with household waste. Please recycle where facilities exist.

Check with your local authority or retailer for recycling advice.

Layout

Plan the desired layout of these fittings carefully, ensuring the cables will reach the distances between the mains plug, the LED driver and each light fitting.

Avoid locating any cables in positions that would cause a trip hazard. Position cables and driver away from areas where they may be at risk from being cut, trapped or damaged.

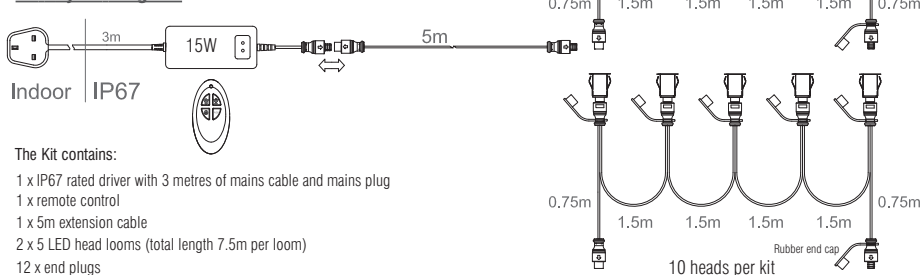
The mains plug must be situated indoors. The kit can be wired into an IP67 external terminal block. (recommended terminal block ref. 90131/90132). This must be carried out by a competent and qualified electrician.

The driver and LED head units are rated at IP67 and can be positioned outdoors.

On RGB kits, the driver and remote control receiver are combined into one unit. The remote control operates via Radio Frequency (RF) so to ensure efficient operation, position the receiver unit appropriately.

These fittings are designed to be used in decking and must not be mounted/installed in concrete and should only be mounted in vertical surfaces (only horizontally mounted).

Kit Layout Diagram



Installation

Existing fittings must be completely removed before installation of a new product. Before removing the existing fitting, carefully note the position of each set of wires.

This LED kit has been specifically designed for use in decking and combines some innovative features to make installation easier:-

- 2 x prewired looms each with 5 LED heads plus a 5m extension cable allowing longer runs to be achieved.

- The wiring loom can be fitted into the deck during construction.

- Heads are interchangeable allowing different sizes and colours to be operated from one power source.

1. Position the plug next to the indoor mains outlet socket that the system will connect to. Do not plug-in at this stage.

2. After deciding the layout of the light fittings, ensure the cables are long enough to connect to the desired positions. The maximum distance between heads is 1.5m.

3. Drill the mounting holes for the light units taking care not to damage any pipes or mains cables beneath the mounting surface. Minimum hole depth is 80mm **(A)**.

Cutting hole sizes are as follows:-

- 25mm diameter lights = 20mm cutting hole

- 45mm diameter lights = 32mm cutting hole

4. From underneath the decking, feed the connector and cable up through each installation hole **(B)**.

5. Fit the protective cap onto the connector - to prevent the unit from dropping back through the hole and to keep debris out.

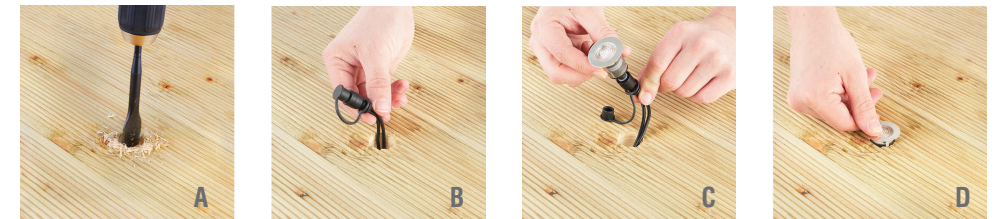
6. Once the decking has been fully assembled and the lights are ready to be installed, remove the protective cap and push the LED head unit onto the connector observing the correct polarity (align the flat part of the connector to ensure correct connection). **(C)**.

7. Fit the assembled head units by pushing them into the holes. The springs on the side of the head will secure the head units in place. **(D)**

8. Connect all looms together and connect directly to the driver output cable, or the extension cable.

9. Ensure any unused heads and cable ends are fitted with the end plug and protective cap to prevent the ingress of moisture.

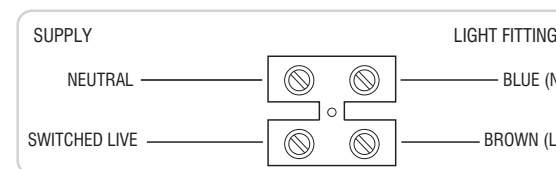
10. Plug the mains plug into the socket and switch on to test.



Wiring

If not using the supplied plug then the product must be wired to an IP67 (or higher rated) terminal block (recommended terminal block ref. 90131/90132).

Having correctly identified the wiring from your existing light fitting, connect to the approved outdoor rated external terminal block in the following way:



Check that...

You have correctly identified the wires.

The connections are tight.

No loose strands have been left out of the connection block.