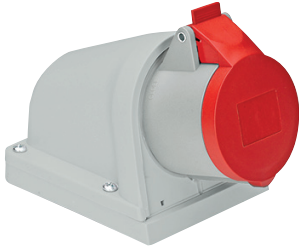



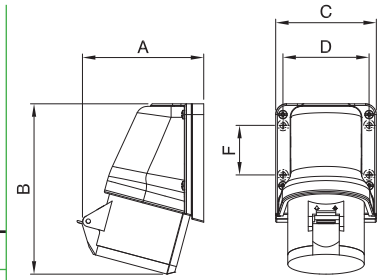


# INDUSTRIAL PLUGS & SOCKETS

## IP44 Splashproof - topTER Series wall mounted






A	V	 2P+E	 3P+E	 3P+N+E
16	110	508124		
	230	508126		
	400		508136	508146
32	110	508224		
	230	508226		
	400		508236	508246

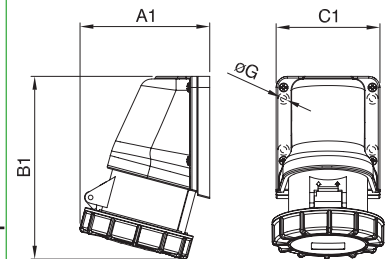


(A)	Poles	mm.					
		A	B	C	D	F	G
16	2P+E	101	146	93,5	80	46	5,5
	3P+E	104	146	93,5	80	46	5,5
	3P+N+E	107	147	93,5	80	46	5,5
32	2P+E	114	157	93,5	80	46	5,5
	3P+E	114	157	93,5	80	46	5,5
	3P+N+E	116	158	93,5	80	46	5,5

## IP67 Watertight - topTER Series wall mounted



A	V	 2P+E	 3P+E	 3P+N+E
16	110	509124		
	230	509126		
	400		509136	509146
32	110	509224		
	230	509226		
	400		509236	509246
63	400	509326	509336	509346



(A)	Poles	mm.					
		A 1	B 1	C 1	D	F	G
16	2P+E	101	146	93,5	80	46	5,5
	3P+E	104	146	93,5	80	46	5,5
	3P+N+E	107	147	93,5	80	46	5,5
32	2P+E	114	157	93,5	80	46	5,5
	3P+E	114	157	93,5	80	46	5,5
	3P+N+E	116	158	93,5	80	46	5,5
63	ALL	171	230	118	106	158	6