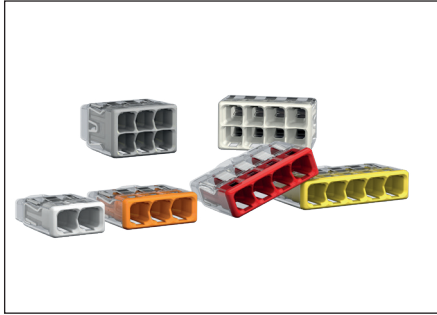


2773 Series

Push-In Connectors / 4mm² / 32A



2773 Series - 4mm²

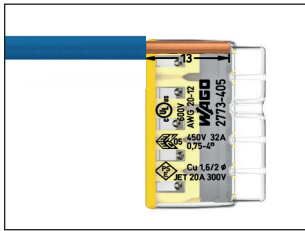
Technical Data

0.75 - 4mm² solid
1.5 - 4mm² stranded
450 V/4 kV/2
32 A

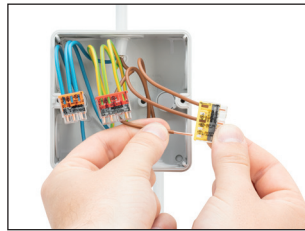
13 mm

Description.	Item No.	Box Unit.
transparent housing - colour coded cover		
○ 2-conductor	2773-402	120
○ 3-conductor	2773-403	100
○ 4-conductor	2773-404	80
○ 5-conductor	2773-405	60
○ 6-conductor	2773-406	50
○ 8-conductor	2773-408	40
Accessories		
Mounting Carrier	2773-500	10

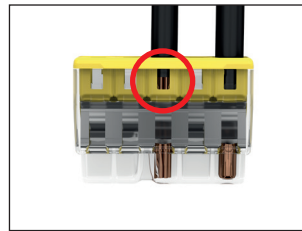
Operating



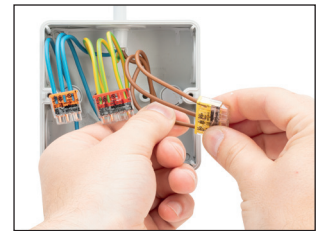
1. Strip the conductor



2. Insert the stripped conductor until it hits the back stop!



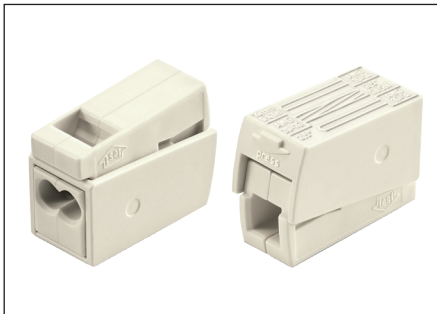
3. The transparent housing shows if conductors are fully inserted.



4. Removal: Hold solid conductor to be removed and twist alternately left and right while pulling the connector. Stranded wire: simply cut the wire close to the connector entry, strip it and insert into a new connector.

224 Series

Lighting Connectors / 2.5mm² / 24A



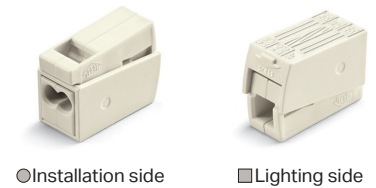
224 Series - 2.5mm²

Technical Data

○ Installation side 1 - 2.5mm² solid
■ Lighting side 0.5 - 2.5mm² stranded fine-stranded
400 V/4 kV/2
24 A

9 - 11 mm

Description.	Item No.	Box Unit.
○ 2-conductor	224-101	100
○ 3-conductor	224-112	100
○ 2-conductor*	224-201	50

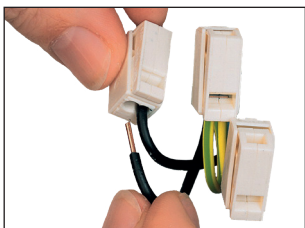


○ Installation side

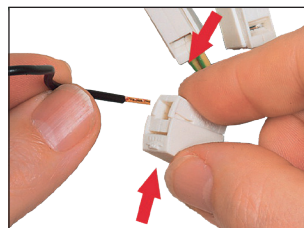
■ Lighting side

* Both sides of the 224-201 connector allows for 0.5 - 2.5mm² solid & fine-stranded.

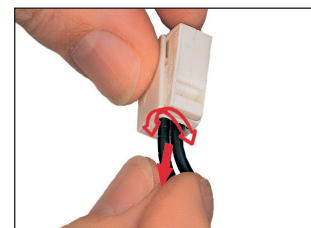
Operating



1. Strip both conductors 9 - 11mm. 2. Insert the solid conductor fully into the installation side.



3. To connect the lighting side squeeze together the housing and insert the conductor fully, then release to complete the connection.



4. To remove the installation side simply twist and pull the conductor at the same time. To remove the lighting side squeeze together the housing and pull out the conductor.