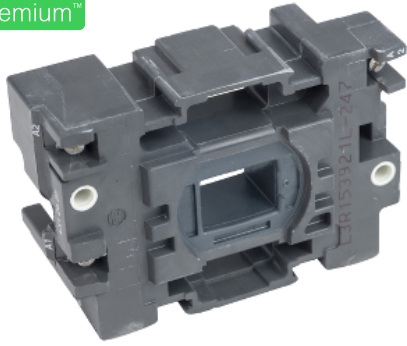


# Product datasheet

Specifications



## TeSys D - contactor coil - LX1D6 - 24 V AC 50/60 Hz for 80 & 95 A contactor

Local distributor code: 2219006 LX1D6B7

EAN Code : 3389110233353

### Main

Range	TeSys
Product or component type	Contactor coil
Device short name	LX1D6
Control circuit type	AC at 50/60 Hz
[Uc] control circuit voltage	24 V AC 50/60 Hz
Average resistance	1.22 Ohm at 20 °C
Inductance of closed circuit	0.08 H
Product compatibility	LC1D40 LC1D50 LC1D65...D95
Mechanical durability	4 Mcycles
Maximum operating rate	3600 cyc/h 60 °C

### Complementary

Coil technology	Without built-in suppressor module
Control circuit voltage limits	Drop-out: 0.3...0.6 Uc at 50/60 Hz (at <55 °C) Operational: 0.8...1.1 Uc at 50 Hz (at <55 °C) Operational: 0.85...1.1 Uc at 60 Hz (at <55 °C)
Inrush power in VA	245 VA 60 Hz cos phi 0.75 (at 20 °C) 245 VA 50 Hz cos phi 0.75 (at 20 °C)
Hold-in power consumption in VA	26 VA 60 Hz cos phi 0.3 (at 20 °C) 26 VA 50 Hz cos phi 0.3 (at 20 °C)
Heat dissipation	6...10 W at 50/60 Hz

### Environment

Ambient air temperature for operation	-5...60 °C
Net weight	0.28 kg

### Packing Units

Unit Type of Package 1	PCE
Number of Units in Package 1	1
Package 1 Height	7.0 cm

Package 1 Width	8.0 cm
Package 1 Length	16.0 cm
Package 1 Weight	317.0 g
Unit Type of Package 2	S02
Number of Units in Package 2	16
Package 2 Height	30.0 cm
Package 2 Width	30.0 cm
Package 2 Length	40.0 cm
Package 2 Weight	5.506 kg

## Offer Sustainability

Sustainable offer status	Green Premium product
REACH Regulation	<a href="#">REACH Declaration</a>
REACH free of SVHC	Yes
EU RoHS Directive	Pro-active compliance (Product out of EU RoHS legal scope) <a href="#">EU RoHS Declaration</a>
Mercury free	Yes
China RoHS Regulation	<a href="#">China RoHS declaration</a> Product out of China RoHS scope. Substance declaration for your information
RoHS exemption information	Yes
Environmental Disclosure	<a href="#">Product Environmental Profile</a>

## Contractual warranty

Warranty	18 months
----------	-----------

## Recommended replacement(s)