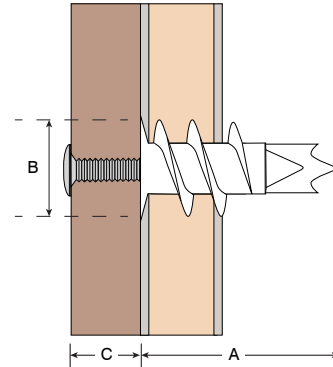
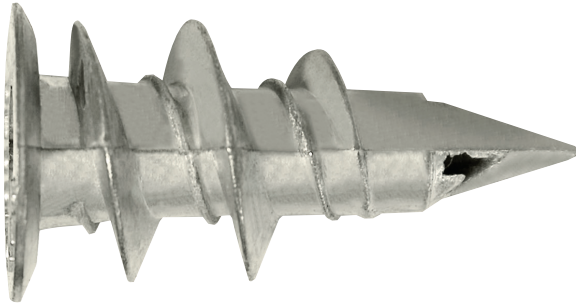


Product Code: QCVFIX

Description: Metal Self Drive Plugs + 8 x 35mm Panhead Screws

**Dimensions (mm)**

Length (A)	28mm
Head Diameter (B)	13mm
Max. Fixture Thickness (C)	10mm

Materials

Screw: Zinc Plated Steel

Plug: Zinc Alloy

General Information

Head Type	Pozi Flange Head
Screw Size	8 x 35mm

Additional Information

Suitable for plasterboard, cavity walls and ceilings. Ideal for fixing shelving, bathroom sanitary ware, hooks and brackets

Packaging Overview

Box Of 100 Fixings

Directives

RoHS 2: 2011/65/EU & RoHS 3: 2015/863/EU

REACH: 1907/2006/EU