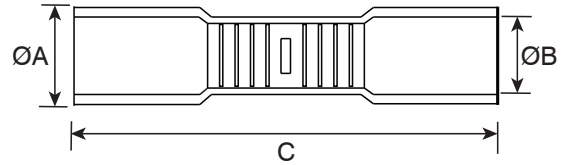
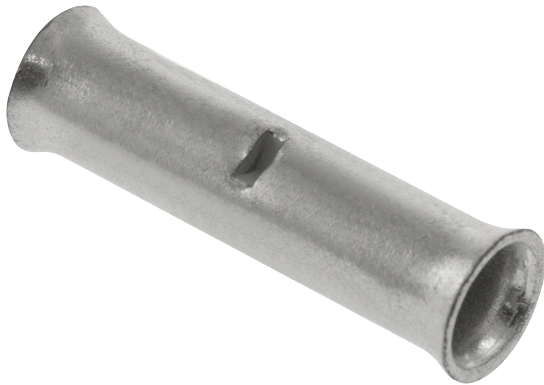


Product Code: QB25

Description: 25mm² Copper Butt Splice Terminal**Dimensions (mm)**

ØA	ØB	C
8.8	6.8	32

Materials

Tin Plated Copper Tube

General Information

Conductor Cable Size	25mm ²
Fixing Type	Suitable for crimp or solder
Cable Stopper	Yes
Contact Plating	5 to 8 Microns
Flared Entry	Yes
Conductivity	97% to IACS
Working Temperature	Up to 180°C

Additional Information

When using flexible fine strand or welding cable it may be necessary to select the next larger terminal size, i.e 70mm² fine strand, select 95mm² terminal.

Packaging Overview

Polybag Of 5 Terminals

Standards

ANSI/UL 486A-486B, CAN/CSA-C22.2 No. 65-13

ANSI/UL 486C, CSA-C22.2 No. 188-13

Directives