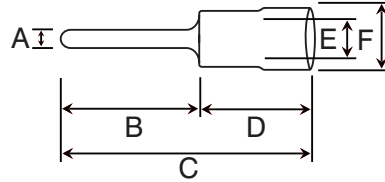


Product Code: QBP12

Description: 1.9mm Dia. X 12mm Pin Terminal - Blue



Dimensions (mm)

A	B	C	D	E	F	G
1.9	12	23.3	11.5	2.3	4.5	0.8

Materials

Terminal: Tin Plated Copper

Insulation: PVC

General Information

Insulation Colour:	Blue
Conductor Cable Size Range	1.5 - 2.5mm ²
Current Rating (Max)	27A
Voltage (Max)	600V
Temperature Rating	-10°C - +75°C

Packaging Overview

Polybag Of 100 Terminals

Standards

ANSI/UL 486A-486B, CAN/CSA-C22.2 No. 65

ANSI/UL 486C, CSA-C22.2 No. 188

ANSI/UL 310, CSA-C22.2 No. 153

Directives

Low Voltage Directive: 2014/35/EU

RoHS 2: 2011/65/EU & RoHS 3: 2015/863/EU

REACH: 1907/2006/EU

