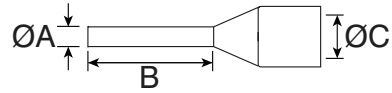
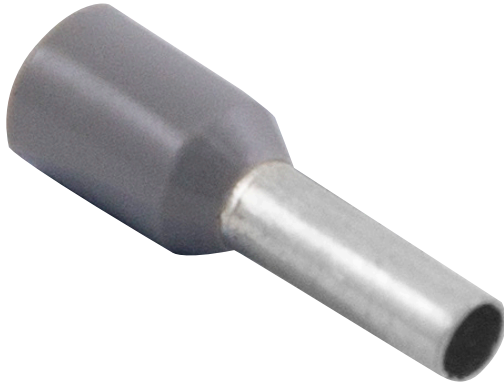


Technical Specification

Product Code: QBFR25

Description: 2.5mm² Single Bootlace Ferrule - Grey

Dimensions (mm)

ØA	B	ØC
2.3	8	4.2

Materials

Terminal: Electrolytic Copper- Purity Grade 99.9%

Insulation: Polyamide 66

General Information

Insulation Colour:	Grey
Conductor Cable Size	2.5mm ²
Ferrule Type	French
Melting Point	250°C
Voltage (Max)	300V
Temperature Rating	-40°C - +105°C

Packaging Overview

Polybag Of 100 Ferrules

Standards

ANSI/UL 486F, CAN/CSA-C22.1

Directives

Low Voltage Directive: 2014/35/EU

RoHS 2: 2011/65/EU & RoHS 3: 2015/863/EU

REACH: 1907/2006/EU

