

INSTALLATION & MAINTENANCE MANUAL DC002 / DC003



230V
50Hz



ML
ACCESSORIES LTD



CE



GENERAL INSTRUCTIONS

These instructions should be read carefully and retained after installation by the end user for future reference and maintenance.

These instructions should be used to aid installation of the following products:

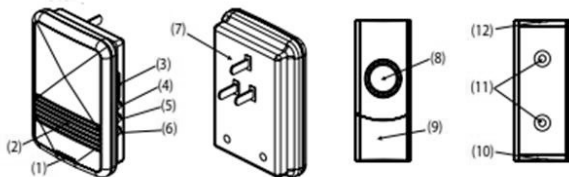
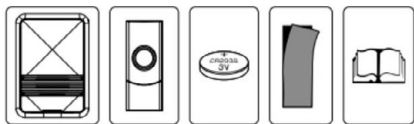
DC002 / DC003

This door chime kit comes with:

- 1 x Receiver
- 1 x Bell push
- 1 x CR2032 battery for bell push
- 1 x Double-sided adhesive pad
- 1 x Instruction manual

Legend

- 1. LED indicator
- 2. Speaker
- 3. Sound and Flash switch
- 4. Volume button
- 5. Melody selector
- 6. Auto learning code button
- 7. Plug
- 8. Push button
- 9. Nameplate cover
- 10. Opening slot
- 11. Standby holes for screws
- 12. Front and back cover hook



INSTALLATION

Notes prior to installation

- If not using the double-sided adhesive pad, fixing screws and wall plugs will be required (not included)
- Avoid positioning the bell push on metal door frames as this may affect the signal
- Avoid positioning above or near heat sources such as radiators, or in damp areas such as kitchens and bathrooms
- Please note the IP (Ingress Protection) rating of the bell push when deciding the location for installation
- The bell push is IP44 rated

User hints – If the receiver does not sound, please check the following:

- Flat batteries in either of the bell pushes – change the batteries
- Wrong battery polarity in either bell push – re-insert batteries correctly
- Units are out of range – operate the receiver within the recommended operation range
- If receiver is getting interference take the battery out of the bell push, unplug receiver, wait for 10 seconds then replace the battery. Repeat procedure to generate new auto learning code.

Battery Installation

- Each bell push uses a CR2032 battery (included)
- Remove the nameplate cover. Remove the small rubber screw cover in lower right-hand corner with thin-tipped tweezers or a needle, and unscrew the retaining screw (see Fig. 1)
- Insert a flat-head screwdriver into the slot on the bottom of the bell push and gently turn to open the front cover
- Install the CR2032 battery ensuring the polarity is correct (+ side up) and replace front cover
- Replace the retaining screw, rubber cover, and the nameplate cover

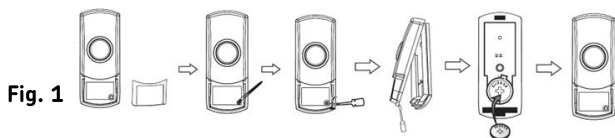


Fig. 1

Wall Mounting Bell Push

- Before drilling into any wall or surface, ensure there are no cables or pipes that could be accidentally damaged
- When using screws to attach to a surface open the bell push as instructed in Fig. 1, pierce the fixing holes on the rear of the bell push, and mark locations for drilling
- Screw the backplate to the surface and replace cover
- To attach using the double-sided adhesive pad, ensure surface is clean and dry
- Peel back one side of the pad and attach to the bell push, then peel back the rear of the pad and attach to the desired surface (see Fig. 2)

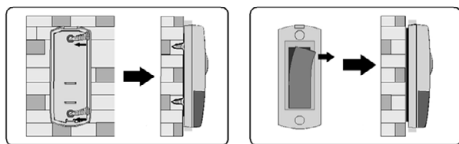


Fig. 2

Receiver Unit Installation

Plug the receiver unit into a socket outlet (see Fig. 3). Please ensure the receiver is within the recommended operating range of the bell push.

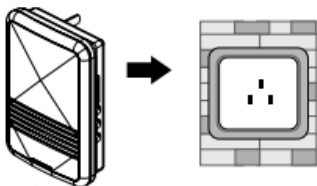


Fig. 3

- **Melody selection:** Press the selector to choose a different melody then press bell push once to store
- **Sound and Flash:** Slide this switch to the left position and the receiver will work with sound only; slide to the middle position and the LED will flash only; slide to the right position for sound and LED flash
- **Volume adjustment:** Press to adjust the sound volume - high, medium or low

SPECIFICATIONS

Bell Push

Power: 3V CR2032 battery (included)

Receiver Unit

Power: 230V AC-50Hz

Operating temperature: -30°C to 40°C

Operating range: 80m (dependent on environment)

Selectable tones: 36 melodies available

GENERAL

This product should be recycled in the correct manner when it reaches the end of its life. Check local authorities for where facilities exist.

The batteries in this product should be recycled in the correct manner when they reach the end of their life. Check local authorities for where facilities exist

Clean with a soft dry cloth only, do not use aggressive cleaning products or solvents which may damage the product.

WARRANTY

This product has a warranty of 1 year from date of purchase. Failure to install this product in accordance with the current edition of the IEE Wiring Regulations (BS7671), improper use, or removal of the batch code will invalidate the warranty. If this product should fail within its warranty period it should be returned to the place of purchase for a free of charge replacement. ML Accessories does not accept responsibility for any installation costs associated with the replacement product. Your statutory rights are not affected. ML Accessories reserve the right to alter product specification without prior notice.