

TIMEGUARD®

6.5W LED Energy Saver
Bulkhead Light

Model: LED88N – Black



Installation & Operating Instructions

1. General Information

These instructions should be read carefully in full before installation, and retained for further reference and maintenance.

2. Safety

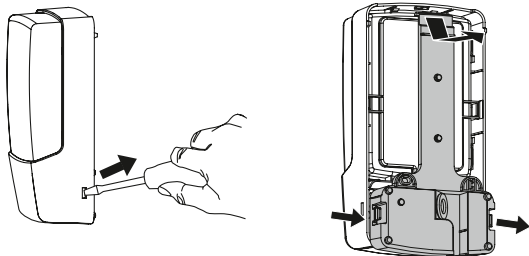
- Before installation or maintenance, ensure the mains supply to the luminaire is switched off and the circuit supply fuses are removed or the circuit breaker turned off.
- It is recommended that a qualified electrician is consulted or used for the installation of this luminaire and install in accordance with the current IEE wiring and Building Regulations.
- Check that the total load on the circuit including when this luminaire is fitted does not exceed the rating of the circuit cable, fuse or circuit breaker.

3. Technical Specifications

- 230V AC 50 Hz
- This luminaire is of class II construction and must not be earthed
- 6.5W LED Non replaceable lamp
- Energy efficiency: Class A+
- Energy Usage: 6.5kWh/1000H
- Lumen Output: 500lm
- Beam Angle: 90° x 90°
- Colour Temperature: 3700K – 4200K
- Operating Temperature: -20°C to +40°C
- IP55 Rated suitable for restricted external applications
- CE Compliant
- Dimensions: H= 205mm W= 108mm D= 63.5mm

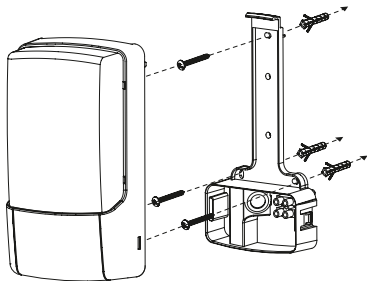
4. Installation

- 4.1 Ensure the mains supply is switched off and the circuit supply fuses are removed or the circuit breaker turned OFF.
- 4.2 Remove the wall plate by releasing the 2 lugs, left & right, located on the rear bottom section of the luminaire and gently ease the wall plate down/outwards from the top.

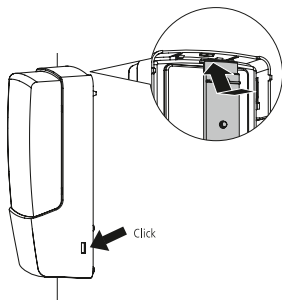


2

- 4.3 Mark the position of the mounting holes on the wall using the wall plate as a template, and drill the holes ensuring not to infringe with any gas/water pipes or electrical cables that may be hidden below the surface. Insert the wall plugs.
- 4.4 Secure the supply cable into the wall plate through the hole(s) provided ensuring that a cable gland, grommet or sealing compound is used to maintain the IP rating of the luminaire.
- 4.5 Fix the wall plate using the correct screws for the wall plugs installed.

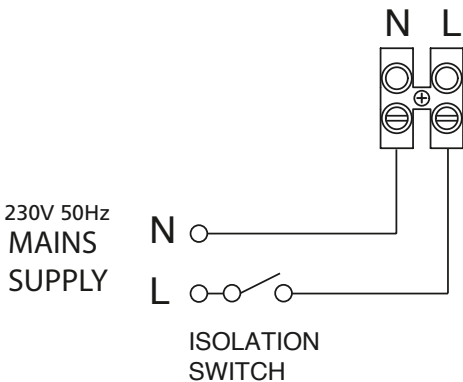
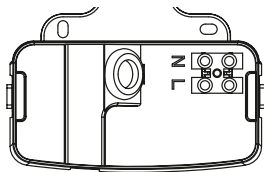


- 4.6 Terminate the cable into the terminal block (See section 5. Connection Diagram) ensuring correct polarity is observed and that all bare conductors are sleeved.
- 4.7 Re-connect the luminaire to the wall plate by positioning it on the top first, and then push on the bottom of the unit ensuring both lugs click into place.



5. Connection Diagram

- Connect the 230V 50Hz mains supply cable to the terminal block as shown.



Supply Live (Brown or Red) to L
Supply Neutral (Blue or Black) to N

6. Operation

- Turn the power to the unit ON and the unit will illuminate.

7. Support

Note: If you have any concerns that the intended application of this product does not meet your requirements, please contact Timeguard directly prior to installation.

8. Guarantee & Company Details

3 Year Guarantee

In the unlikely event of this product becoming faulty due to defective material or manufacture, within 3 years of the date of purchase, please return it to your supplier in the first year with proof of purchase and it will be replaced free of charge. For years 2 to 3 or any difficulty in the first year, telephone our helpline.

Note: a proof of purchase is required in all cases. For all eligible replacements (where agreed by Timeguard) the customer is responsible for all shipping/postage charges outside of the UK. All shipping costs are to be paid in advance before a replacement is sent.



If you experience problems, do not immediately return the unit to the store. Telephone the Timeguard Customer Helpline;

HELPLINE

020 8450 0515

or email helpline@timeguard.com

Qualified Customer Support Co-ordinators will be on-line to assist in resolving your query.



A **theben** Group Company

For a product brochure please contact:

Timeguard Limited.

Victory Park, 400 Edgware Road,
London NW2 6ND

Sales Office: 020 8452 1112
or email csc@timeguard.com

www.timeguard.com