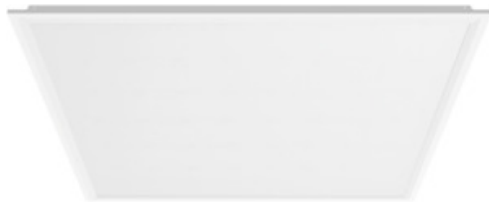


## Commercial

### Wraysbury Panel 30W 6000K 600x600 TP(b) - White



- Optic lens for even light distribution
- Better uniformity and heat dissipation
- Flicker free driver
- Loch3 Quick Connector supplied



### General Data

<b>Technology</b>	LED
<b>Mounting options</b>	Ceiling
<b>Electrical Connector Type</b>	Quick Connector
<b>Install Options</b>	Ceiling
<b>Input Cable</b>	2-Core Ø0.75-2.5mm
<b>Input Electrical Connection</b>	Live   Neutral
<b>Fire Rating</b>	TP(b)
<b>General Application</b>	Commercial   Industrial   Educational
<b>Operating Temperature Range °C</b>	0 - +40
<b>Warranty (Years)</b>	5

430059

Technical Specification

## Optical Data

<b>LED Manufacturer / Type</b>	Jingrui
<b>Fixture Luminous Flux (Lm)</b>	3382
<b>Luminaire Efficacy @6000K (lm/W)</b>	110
<b>LOR %</b>	100
<b>Colour Selectable</b>	No
<b>Beam Angle°</b>	110
<b>Photobiological Risk Group</b>	RG0

## Light Source Data

<b>Energy Class</b>	C
<b>Lm/W</b>	112
<b>Colour Temperature (K)</b>	6000
<b>Light Colour</b>	Daylight
<b>CRI Ra</b>	80

430059

Technical Specification

## **Electrical Data**

<b>Wattage (W)</b>	30
<b>Total Power Consumption (W)</b>	30.2
<b>Mains voltage (V)</b>	220 - 240
<b>Lamp power factor</b>	0.9
<b>Electrical protection</b>	Class II
<b>Driver Output (V)</b>	30-40
<b>Driver Output Current (mA)</b>	800
<b>Control Gear Type CC or CV</b>	Constant Current
<b>SVM</b>	0.01
<b>PstLM</b>	0.02
<b>LED Flicker Rate</b>	Flicker-free
<b>Dimmable</b>	No
<b>Driver Brand</b>	Philips
<b>Inrush Current (A)</b>	17.2
<b>Nominal Frequency (Hz)</b>	50/60
<b>Surge Protection (kV)</b>	1
<b>Max. Luminaire per 10A C Breaker</b>	36
<b>Max. Luminaire per 13A C Breaker</b>	50
<b>Max. Luminaire per 16A C Breaker</b>	63
<b>Max. Luminaire per 20A C Breaker</b>	76
<b>Max. Luminaire per 10A B Breaker</b>	22
<b>Max. Luminaire per 13A B Breaker</b>	30
<b>Max. Luminaire per 16A B Breaker</b>	38
<b>Max. Luminaire per 20A B Breaker</b>	46

430059

Technical Specification

## Lifetime Data

<b>Lifespan L70 B50 @25°C (Hrs)</b>	50000
-------------------------------------	-------

## Physical Data

<b>Housing colour</b>	White RAL 9003
<b>Body material</b>	Sheet Metal
<b>Driver Housing</b>	ABS
<b>IP Rating</b>	40
<b>IK Rating</b>	4
<b>Diffuser Material</b>	Polystyrene TP (b)
<b>Diffuser finish</b>	Frosted
<b>Nominal Product Length (mm)</b>	595
<b>Nominal Product Width (mm)</b>	595
<b>Nominal Product Height (mm)</b>	28
<b>Weight (kg)</b>	1.5

## Standards and Approvals

<b>Manufactured In Accordance To</b>	EN 60598-1
<b>CE Mark</b>	Yes
<b>UKCA Mark</b>	Yes
<b>WEEE Symbol</b>	Yes
<b>Certificate Of Conformity</b>	Available on Request
<b>Accredited Members</b>	LIA, ISO9001

## Product Relations

430059

Technical Specification



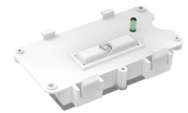
**430451**  
**Grafham Universal Emergency Pack**



**430451-ST**  
**Grafham Universal Emergency Pack - Self test**



**430962**  
**Grafham Plug & Play Linear Internal 2W Emergency pack**



**430963**  
**Grafham Bulkhead Emergency Conversion Pack 2W Plug & Play**



**LL430964**  
**Grafham E-SEL3 Linear High Bay Emergency Conversion Pack 20-55V DC 100mA 4W max LifePO4 6.4V DC 3.3Ah Plug & Play**



**430964**  
**Grafham E-SEL3 Linear High Bay Emergency Conversion 4W Max Pack Plug & Play**



**430967**  
**Grafham E-SEL3 Avon Emergency Conversion Pack 2W Max Pack Plug & Play**

