

431270

Technical Specification

Commercial

Wraysbury Backlit Panel 600x600 30W 4000K White TP(b)



Beam Angle



Kelvin



LED Lifespan L70



Product Warranty



Class II



Ingress Protection



Professionally Replaceable

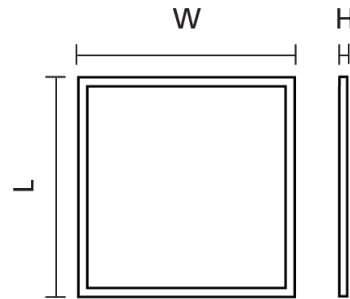
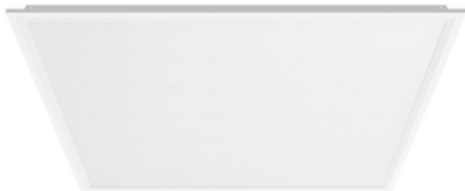


Professionally Replaceable



TP(b) Rated

- Optic lens for even light distribution
- Better uniformity and heat dissipation
- Flicker free driver



General Data

Technology	LED
Mounting options	Ceiling
Install Options	Ceiling
Electrical Connector Type	Quick Connector
Input Cable	2-Core Ø0.75-2.5mm
Input Electrical Connection	Live Neutral
Fire Rating	TP(b)
General Application	Commercial Industrial Educational
Operating Temperature Range °C	0 - +40
Warranty (Years)	5

431270

Technical Specification

Optical Data

LED Manufacturer / Type	Jingrui SMD2835
Fixture Luminous Flux (Lm)	3300
Luminaire Efficacy @4000K (lm/W)	110
LOR %	100
Colour Selectable	No
Beam Angle°	110
Glare Control (UGR)	>22
Photobiological Risk Group	RG0

Light Source Data

Energy Class	C
Lumens	3300
Colour Temperature (K)	4000
Light Colour	Cool White
CRI Ra	>80

431270

Technical Specification

Electrical Data

Wattage (W)	30
Total Power Consumption (W)	30
Mains voltage (V)	220 - 240
Lamp power factor	>0.95
Electrical protection	Class II
Driver Output (V)	36
Driver Output Current (mA)	750
Control Gear Type CC or CV	Constant Current
LED Flicker Rate	Flicker-free
Dimmable	No
Driver Brand	Lifud
Inrush Current (A)	24
Nominal Frequency (Hz)	50/60

Lifetime Data

Lifespan L70 B50 @25°C (Hrs)	50000
-------------------------------------	-------

431270

Technical Specification

Physical Data

Housing colour	White RAL 9003
Body material	Sheet Metal
Driver Housing	ABS
IP Rating	40
IK Rating	4
Diffuser Material	Polystyrene TP (b)
Diffuser finish	Frosted
Nominal Product Length (mm)	595
Nominal Product Width (mm)	595
Nominal Product Height (mm)	28
Weight (kg)	1.45

Standards and Approvals

Manufactured In Accordance To	EN 60598-1
CE Mark	Yes
UKCA Mark	Yes
WEEE Symbol	Yes
Certificate Of Conformity	Available on Request
Accredited Members	LIA, ISO9001

Product Relations



430451 Grafham Universal Emergency Pack

431270

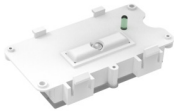
Technical Specification



430451-ST
Grafham Universal Emergency Pack - Self test



430962
Grafham Plug & Play Linear Internal 2W Emergency pack



430963
Grafham Bulkhead Emergency Conversion Pack 2W Plug & Play



LL430964
Grafham E-SEL3 Linear High Bay Emergency Conversion Pack 20-55V DC 100mA 4W max LifePO4 6.4V DC 3.3Ah Plug & Play



430964
Grafham E-SEL3 Linear High Bay Emergency Conversion 4W Max Pack Plug & Play



430967
Grafham E-SEL3 Avon Emergency Conversion Pack 2W Max Pack Plug & Play

