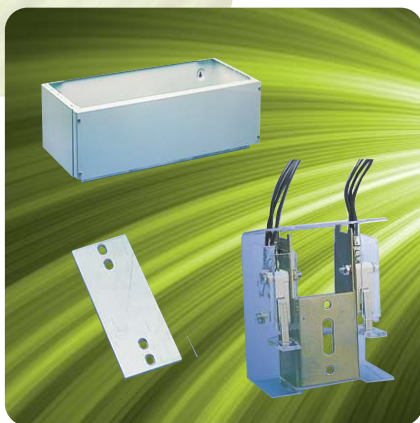


Loadswitch Fuse Combination Units



Housed Fuse Switches 32A - 800A

Features

- Exceeds the requirements of EN 60947-3
- Full withstand duty
- 80kA rms fused short circuit capacity
- 415V AC rated voltage
- AC23A Utilisation category
- IP4X Ingress Protection
- Single solid links available as optional extras as per table below (one required per phase)

Current Rating (A)	Terminal Type	Terminal fixing Screws	Supplied with fuses	3 Pole & Neutral Product Code	4 Pole Product Code	Solid Link Product Code
32A	Cable clamps	N/A	Yes	HBE3P32N	N/A	HEL32
63A	M8 Inserted	Supplied with lug fixing screws	Yes	HBF3P63N	N/A	HFL63
100A	M8 Inserted	Supplied with lug fixing screws	Yes	HBF3P100N	HBF4P100	HFL200A
125A	M8 Inserted	Supplied with lug fixing screws	Yes	HBF3P125N	N/A	HFL200A
160A	M8 Inserted	Supplied with lug fixing screws	No	HBF3P160N	N/A	HFL200A
200A	M8 Inserted	Supplied with lug fixing screws	No	HBF3P200N	HBF4P200	HFL200A
315A	M10 Inserted	Supplied with lug fixing screws	No	HBK3P315N	N/A	HLL400
400A	M10 Inserted	Supplied with lug fixing screws	No	HBL3P400N	HBL4P400	HLL400
630A	M16 x 1 and M8 x 4	Not supplied	No	HBN3P630N	N/A	HNL800
800A	M16 x 1 and M8 x 4	Not supplied	No	HBN3P800N	HBN4P800	HNL800

Housed Fuse Switches Accessories

Description	Current Rating (A)	Product Code
Cable Spreader Box	63 to 125A	HB125CSB
	160 to 200A	HB200CSB
	315 and 400A	HB400CSB
	630 and 800A	HB800CSB
Castell * lock mounting kit	All	SCLK
2 Bank Auxiliary Switch	63 to 200A	SAUX2F
	315 to 800A	SAUX2N
4 Bank Auxiliary Switch	63 to 200A	SAUX4F
	315 to 800A	SAUX4N
6 Bank Auxiliary Switch	315 to 800A	SAUX6N

* Castell is a trademark of Castell Safety International Limited

NOTE: Standard symbol DSI, special symbols are available direct from Castell*. Quote reference: Castell FS2 – Spigot 9.5mm square x 22.5mm, 65° anti-clockwise to trap key.