

Farbe: weiß (RAL 9010)

In Übereinstimmung mit: EN 50085, BS 4678 Part 4, VDE 0604-1

Colour: white (RAL 9010)

In accordance with: EN 50085, BS 4678 Part 4, VDE 0604-1

Lieferlänge: in Stangen zu 2m oder 3m
(Referenznummer beziehen sich auf Ausführungen in 3m)

Standard length: available in 2m or 3m standard length
(reference numbers refer to versions in 3m length)

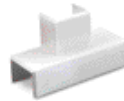
Flachwinkel
flat angle



Abzweigung
flat tee



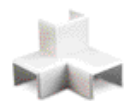
Abgang
side tee



Winkelabgang
links
left
intersection



Winkelabgang
rechts
right
intersection



SFW 16/16	ST 16/16-16/16	ST 16/16-16/25
20	10	10
600	400	300
004 956	004 971	004 975

SFW 16/25	ST 16/25-16/25	SA 16/25-16/25	SA 16/25-16/16	SWAL 16/25	SWAR 16/25
10	10	10	10	10	10
300	300	300	300	200	200
004 957	004 974	004 984	004 985	004 982	004 983

SFW 16/40	ST 16/40-16/40
5	10
200	150
004 958	004 972

SFW 25/40	ST 25/40-25/40
5	5
100	100
004 959	004 973

SFW 40/40	ST 40/40-40/40
5	5
50	100
023 003	023 006

SFW 40/60	ST 40/60-40/60
-	-
32	32
023 612	023 611

SFW 25/40	ST 25/40-25/40
5	5
100	100
004 959	004 973