

Not Equivalent - Better!

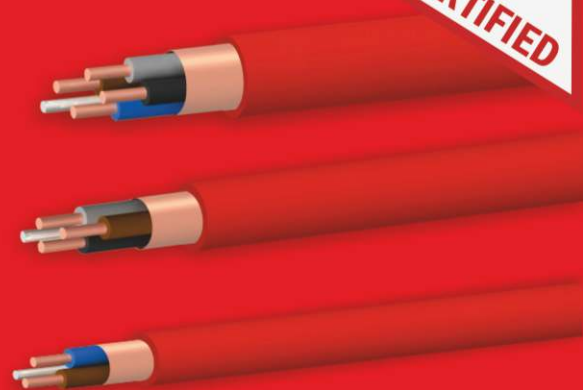
FIRE SYSTEM CABLES

It is the unique design and quality of material that enables NoBurn Plus fire cable to meet the exacting 'Enhanced' standard without costly, difficult to install multiple sheaths and wraps - a joy to install by comparison to any other brand.

Ventcroft's NoBurn Plus 'Enhanced' Fire Performance Cable has been independently tested and approved by BASEC to meet with BS 5839-1:2002+A2:2008, BS 8434-2:2003 120 minutes and BS EN 50200:2006 PH30, PH60 & PH120. NoBurn cable is manufactured in the UK using the latest technology, materials and manufacturing equipment.

Materials and processes are recorded and tracked throughout manufacture to ensure consistent reliability and quality. All cable is marked with time and date of manufacture and each reel with a unique quality assurance batch and test number.

**NOW
 BASEC
 APPROVED & CERTIFIED**



NOBURN FIRE CABLE IS THE FASTEST CABLE TO PREPARE FOR TERMINATION.

No troublesome multiple sheaths to strip:-

- All in one - Easy strip outer sheath
- No separate foil
- No additional fibre wraps
- No mica tape on conductors
- No additional core separators to remove

NoBurn cable has superb working flexibility but stays where you put it, reduced installation time and costs.

Supplied on Robust Plastic Reels

Our Grey coloured reel means clear identification of Enhanced Fire Cable from Standard Fire Cable – Avoid expensive correction costs caused by wrong cable use.



- Installer Safe and Easy Handling •
- Better Reeling and Damage Resistant •
- Weather and Moisture Resistant •



Licence No: 152/001



Features

- Easy to Install and Superb Working Flexibility
- Up to 12 Twists per metre for Data Protection
- Red & White Outer Sheaths Available
- 1.0mm², 1.5mm², 2.5mm² & 4.0mm² Conductors
- 100m, 200m, 500m and Special Lengths Available
- Copper / Co-polymer Foil Screen
- Low Smoke & Zero Halogen
- Voltage Rating 300v/500v
- Suitable for Zone 1 and Zone 2 Hazardous Area use
- Suitable for Air Conditioning, Computer Control & Lift Doors where Low Smoke & Zero Halogen is required

- Approved and Certified to meet BS 5839-1:2002 +A2:2008 Clause 26.2e
- BS 8519:2010 Category 2
- BS 8434-2:2003 120 mins.
- BS EN 50200:2006 PH30, PH60 & PH120
- BS 7629-1:2008
- BS 6387:1994 Clause 11 CWZ
- BS EN 50267-2-1:1999
- BS EN 61034-2:2005
- Also suitable for Emergency Lighting Standard
- Voice Alarm Systems Standard
- Voice Communication Standard

'Enhanced' Fire Cable
 Fire Resistance Standard
 Fire Resistance Standard
 Fire Resistance Standard
 Fire Resistance Standard
 Fire Resistance Standard
 Fire Resistance Standard
 Halogen Emission Standard
 Low Smoke Standard

BS 5266-1:2011
 BS 5839-8:2008
 BS 5839-9:2003



Manufactured in
 United Kingdom

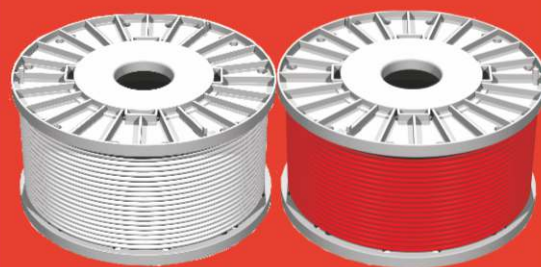
Specifications

BASEC approved to	'Enhanced' Fire Cable Fire Resistance Standard Fire Resistance Standard Fire Resistance Standard Fire Resistance Standard Fire Resistance Standard Halogen Emission Standard Low Smoke Standard	BS 5839-1:2002 +A2:2008 Clause 26.2e BS 8519:2010 Category 2 BS 8434-2: 2003 120 mins. BS EN 50200:2006 PH30, PH60 & PH120 BS 7629-1:2008 BS 6387:1994 Clause 11 CWZ BS EN 50267-2-1:1999 BS EN 61034-2:2005
Designed to comply to	Emergency Lighting Voice Alarm Systems Standard Voice Communication Standard	BS 5266-1:2011 BS 5839-8:2008 BS 5839-9:2003
Materials	CPC (Earth) Conductors Core Installation Screening Outer Sheath	Tinned Annealed Copper Plain Annealed Copper Fire Resistant Silicone Copper Foil Low Smoke Halogen Free Thermoplastic
Working Voltage	Core to Core Core to CPC	500V 300V
Types	Outer Sheath Colours Number of Cores Inner Cores CSA	Red or White 2, 3 & 4 Core 1.0, 1.5, 2.5 & 4.0mm ² CSA
Resistance	1.0mm ² CSA 1.5mm ² CSA 2.5mm ² CSA 4.0mm ² CSA	18.1 Ohms / 1Km 12.1 Ohms / 1Km 7.41 Ohms / 1Km 4.61 Ohms / 1Km
Minimum Bend Radius	Radius = 6 x Diameter	
Operating Temp. Installation Temp.	Minimum/Maximum Minimum/Maximum	-40°C to +90°C. 0°C to +70°C
Voltage Drop (DC or Single Phase AC)	1.0mm ² CSA 1.5mm ² CSA 2.5mm ² CSA 4.0mm ² CSA	44 Ohms mV / A / m 29 Ohms mV / A / m 18 Ohms mV / A / m 11 Ohms mV / A / m
Approximate Overall Diameter	2 Core 3 Core 4 Core	1.0mm ² / 8.00mm 1.5mm ² / 8.20mm 2.5mm ² / 8.80mm 4.0mm ² / 10.20mm 1.0mm ² / 8.90mm 1.5mm ² / 9.90mm 2.5mm ² / 10.80mm 4.0mm ² / 13.10mm 1.0mm ² / 10.40mm 1.5mm ² / 11.10mm 2.5mm ² / 12.60mm 4.0mm ² / 15.00mm
Approximate Weights	2 Core with CPC 3 Core with CPC 4 Core with CPC	1.0mm ² 8.2 Kg / 100 m 1.5mm ² 9.7 Kg / 100 m 2.5mm ² 14.4 Kg / 100 m 4.0mm ² 24.0 Kg / 100m 1.0mm ² 9.8 Kg / 100 m 1.5mm ² 13.2 Kg / 100 m 2.5mm ² 19.4 Kg / 100 m 4.0mm ² 28.0 Kg / 100m 1.0mm ² 11.2 Kg / 100 m 1.5mm ² 14.8 Kg / 100 m 2.5mm ² 22.7 Kg / 100 m 4.0mm ² 50.0 Kg / 100 m
Current Rating	Cable Clipped (DC or Single Phase AC) Enclosed (DC or Single Phase AC)	1.0mm ² 15A 1.5mm ² 19.5A 2.5mm ² 27A 4.0mm 36A 1.0mm ² 13A 1.5mm ² 16.5A 2.5mm ² 23A 4.0mm ² 30A
Capacitance Rating	1.5mm ² CSA 2 Core & CPC } 3 Core & CPC } 4 Core & CPC - 2.5mm ² CSA 2 Core & CPC } 3 Core & CPC } 4 Core & CPC }	Core to Core - Average 70 pF/m Core to Screen - Average 125 pF/m Core to Core - Average 75 pF/m Core to Screen - Average 150 pF/m Core to Core - Average 85 pF/m Core to Screen - Average 155 pF/m
Warranty	Period Identification	10 Years from Date of Manufacture Date of Manufacture Marked On Cable

The Fastest Fire Cable to Install

Ventcroft NoBurn Plus is available in a variety of multiple core combinations all with CPC (circuit protection conductor).

100m, 200m, 500m reels and other special lengths are available.



Available with
Red & White Sheaths Ex Stock.
Black, Orange and other Sheath Colours Available - MOQ will apply.

Manufacturers Recommended Installation Guide Lines

Recommended metal clip spacing 300mm Horizontal
400mm Vertical

Recommended Cable Tray Fastening - Metal Tie, spacing every 1.5 metres.

Installation Temperatures:

Minimum installation Temperature 0°C
Maximum installation Temperature 70°C

Operating Temperature:

Minimum -40°C to Maximum +90°C.
The cable should not be flexed or bent when either the cable or operating temperature is below the recommended minimum or above the maximum recommended **installation** temperatures.

Minimum Bend Radius = 6 x Diameter

Plastic clips or ties must not be used as the sole means of support for fire cable.

