

PT205(LW) - COMPOSITE AND POLYMER EARTH PITS

Description:

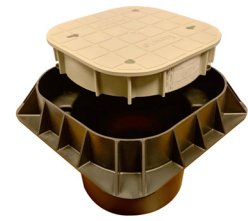
An Earth Pit is a product which is installed into the ground, protecting the connection of Earth Rod, giving you and your customers a safe working area.

Material:

Composite/Polymer



PT205



PT205LW

OTHER ADDITIONAL INFORMATION

Composite:

Size: 280mm x 185mm

Material: Composite

Usage: Cover connection of Earth Rod to electrical installation.

Weight: 8Kg

Load Rated: 5000Kg

Polymer:

Size: 300mm x 158mm

Material: Polymer

Usage: Cover connection of Earth Rod to electrical installation

Weight: 1.8Kg

Load Rated: 5000Kg

