



► Fixed Terminal Batten Lampholders



Standard of Compliance - **BS EN 61184**
 Specification
 • FBLHO - Straight 3 terminal T2 rated with H.O. skirt
 • FBLAHO - Angled 4 terminal T2 rated with clear base & H.O. skirt

List No.	Description	Pack Qty
FBLHO	Straight	10
FBLAHO	Angled	10

► Pendant & Ceiling Rose



CR6

Standard of Compliance - **BS EN 60598-2-1, BS EN 61184, BS67**
 Specification
 • PS6 - 6" Pre-wired T2 rated pendant set (metal bayonet)
 • CR6 - 6A rated ceiling rose with earth terminal & flex strain

Note
 • Clear base on ceiling roses to aid wiring

List No.	Description	Pack Qty
PS6	Pendant	10
CR6	Ceiling rose	10

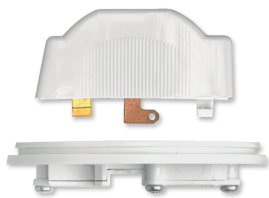
► Short Skirt Lampholder



Standard of Compliance - **BS EN 60598-2-1, BS EN 61184, BS67**
 Specification
 Short skirt T2 rated lampholder with metal bayonet

List No.	Description	Pack Qty
LHSS	Lampholder	10

► Plug-In Ceiling Roses



Standard of Compliance - **BS 6972**
 (Suitable for BESA/conduit box or surface mounting)

Specification
 • Pin set (plug, base & cover)
 Note
 • Niglon plug-in units are Hager 'Klik' compatible

List No.	Description	Pack Qty
CCR3	3 pin set	10
CCR4	4 pin set	10

► Plug-In Ceiling Roses (pre-wired)



Standard of Compliance - **BS 6972**
 (Suitable for BESA/conduit box or surface mounting)

Specification
 • Pin set (plug, base & cover)
 • Pre-wired 2m x 0.75mm flex
 Note
 • Niglon plug-in units are Hager 'Klik' compatible

List No.	Description	Pack Qty
CR3275	3 pin	5
CR4275	4 pin	5

► Pre-Wired Batten Lampholders



Standard of Compliance - **BS EN 61184**
 Specification
 • BLSHOPW - Straight 4 terminal T2 rated with clear base & H.O. skirt
 • BLAHOPW - Angled 4 terminal T2 rated with clear base & H.O. skirt

List No.	Description	Pack Qty
BLSHOPW	Straight	10
BLAHOPW	Angled	10

► Ceiling Pull Switches (1 way switch)



Standard of Compliance - **BS EN 60669-1**
 Specification
 • 10AX 1 way cord switch suitable to use with fluorescent & inductive loads

List No.	Description	Pack Qty
CS61	1 way switch	10

► Ceiling Pull Switches (2 way switch)



Standard of Compliance - **BS EN 60669-1**
 Specification
 • 10AX 2 way cord switch suitable to use with fluorescent & inductive loads

List No.	Description	Pack Qty
CS62	2 way switch	10

► Ceiling Pull Switches (Neon)



Standard of Compliance - **BS EN 60669-1**
 Specification
 • 45A DP isolator cord switch with neon

List No.	Description	Pack Qty
CS45DPN	Neon switch	10