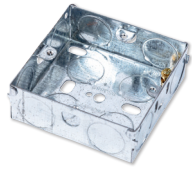


► 1 Gang



Standard of Compliance - **BS EN60670, BS 4662**

List No.	Description	Pack Qty
EPD	16mm 1 gang fitted with 1 adj & 1 fixed lug	20
E11	25mm 1 gang fitted with 1 adj & 3 fixed lugs	100
ES1	35mm 1 gang fitted with 1 adj & 3 fixed lugs	100
CB2	47mm 1 gang fitted with 1 adj & 3 fixed lugs	10

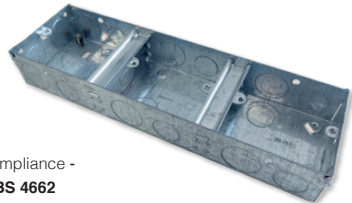
► 1 Gang Architrave



Standard of Compliance - **BS EN60670, BS 4662**

List No.	Description	Pack Qty
AR1	27mm 1 gang & 2 fixed lugs	20

► 3 x 1 Gang



Standard of Compliance - **BS EN60670, BS 4662**

List No.	Description	Pack Qty
DES2/3	35mm 3 x 1 gang	5

► Back Box Saver

Usage - **Fix a broken screw thread in a metal back box**

List No.	Description	Pack Qty
BBS1	Back Box Saver	1
List No.	Description	Pack Qty
BBS10	Back Box Saver x 10	10



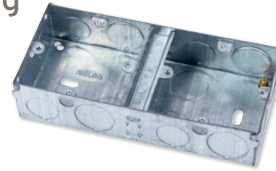
► 2 Gang



Standard of Compliance - **BS EN60670, BS 4662**

List No.	Description	Pack Qty
E12	25mm 2 gang fitted with 1 adj & 1 fixed lugs	50
ES2	35mm 2 gang fitted with 1 adj & 1 fixed lug	50
SB1	47mm 2 gang fitted with 1 adj & 1 fixed lug	5

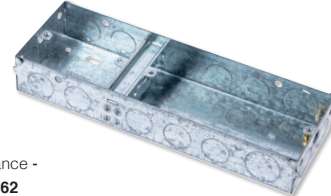
► 2 x 1 Gang



Standard of Compliance - **BS EN60670, BS 4662**

List No.	Description	Pack Qty
DES1	25mm 2 x 1 gang each outlet fitted with 1 adj & 8 fixed lugs	5
DES2	35mm 2 x 1 gang each outlet fitted with 1 adj & 4 fixed lugs	5

► 2 + 1 Gang



Standard of Compliance - **BS EN60670, BS 4662**

List No.	Description	Pack Qty
DES2/1	35mm 2 + 1 gang each outlet fitted with 1 adj & 4 fixed lugs	5

► 2 + 1 + 1 Gang



Standard of Compliance - **BS EN60670, BS 4662**

List No.	Description	Pack Qty
DES211	35mm 2 x 1 x 1 gang	5

► 2 x 2 Gang



Standard of Compliance - **BS EN60670, BS 4662**

List No.	Description	Pack Qty
DES22	35mm 2 x 2 gang	5

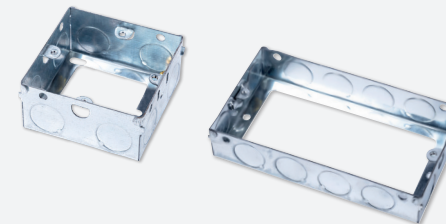
► 2 + 2 + 1 Gang



Standard of Compliance - **BS EN60670, BS 4662**

List No.	Description	Pack Qty
DES221	35mm 2 x 2 x 1 gang	5

► Extension Box (1 & 2 Gang)



Standard of Compliance - **BS EN60670, BS 4662**

List No.	Description	Pack Qty
EPDEB	16mm 1 gang fitted with 1 adj & 1 fixed lug	20
E11EB	25mm 1 gang fitted with 1 adj & 3 fixed lugs	10
ES1EB	35mm 1 gang fitted with 1 adj & 3 fixed lugs	10

List No.	Description	Pack Qty
E12EB	25mm 2 gang fitted with 1 adj & 1 fixed lug	10
ES2EB	35mm 2 gang fitted with 1 adj & 1 fixed lug	10

► Safeplate™



Standard of Compliance - **522.6.2 (iii) & 522.6.204 (iv) 18th edition IET Wiring regs.**

Specification -
 • **UK made**
 • **Structural Galv. Carbon Steel**
 • **350 min tensile yield**



List No.	Description	Pack Qty
SP1	52 x 75mm	100
SP3	50 x 100mm	75
SP2	50 x 152mm	50