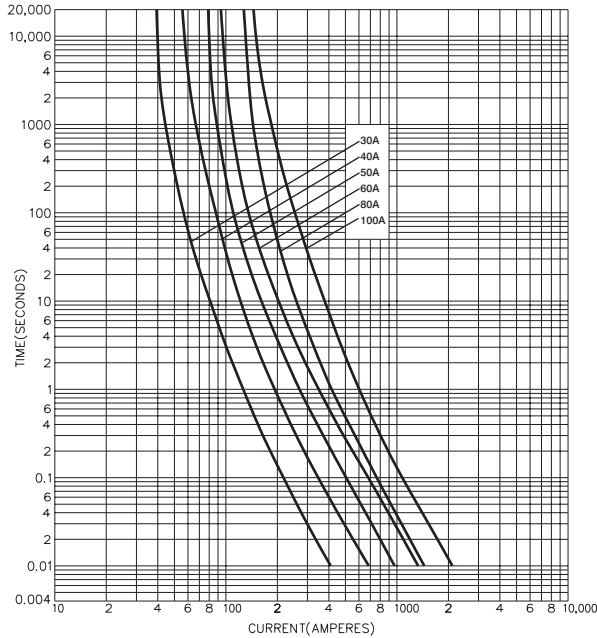


# BS1361 Cylindrical House Service Cut-out Fuse Links

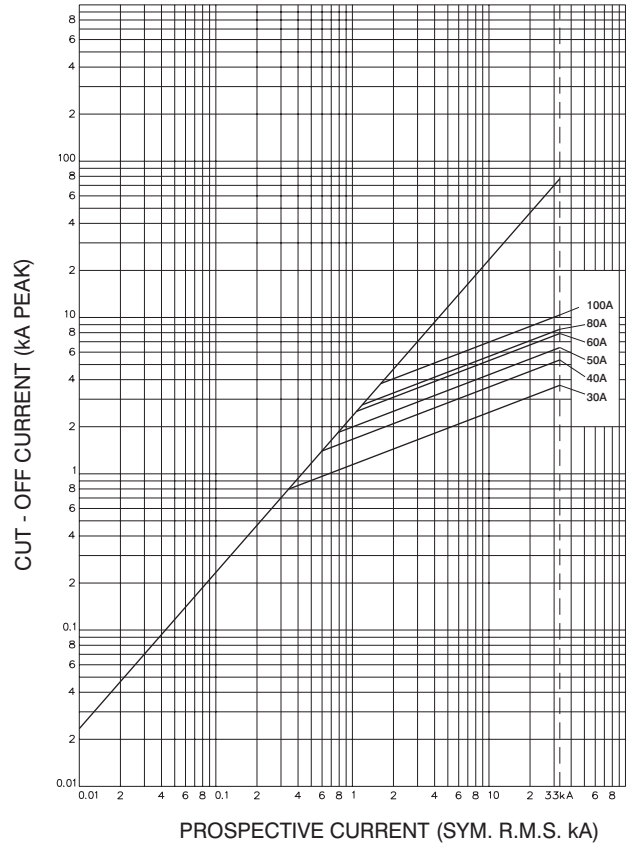
Ferrule End Cap 415V 30 to 100 Amp

LR85

### Time-Current Characteristic Curves

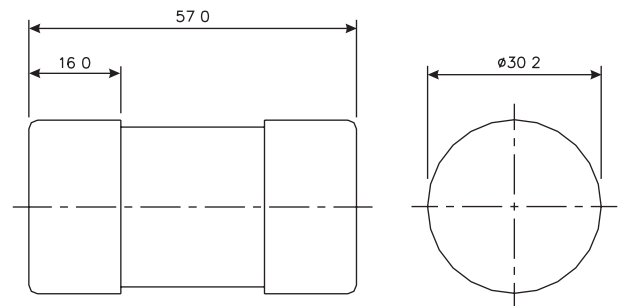


### Cut-off Current Characteristics



Rating and Ordering Code	I <sup>2</sup> t (Ampere <sup>2</sup> Seconds)			Nom. Watts Loss
	Pre-Arcing	Total at 240V	Total at 415V	
30LR85	1,200	2,300	3,600	3.4
40LR85	3,680	6,900	11,000	3.5
50LR85	6,360	12,000	19,100	4.1
60LR85	12,700	24,000	38,100	4.5
80LR85	13,200	38,100	82,500	4.9
100LR85	26,900	57,300	99,500	5.0

Designed for use in conventional house service cut-outs, ASTA Certified and in accordance with BS1361: 1985. The ordering code is Rating followed by LR85 e.g. 40LR85. Carton quantity - 20 all ratings. Dimensional details in mm.



**Bussmann Division**  
**Cooper (U.K.) Ltd**  
 Burton-on-the-Wolds  
 Leicestershire, LE12 5TH  
 United Kingdom  
 Tel: (44) (0)1509 88 27 37  
 Fax: (44) (0)1509 88 27 86

This bulletin is intended to clearly present comprehensive product data and provide technical information that will help the end user with design applications. Bussmann reserves the right, without notice, to change design or construction of any products and to discontinue or limit distribution of any products. Bussmann also reserves the right to change or update, without notice, any technical information contained in this bulletin. Once a product has been selected, it should be tested by the user in all possible applications.

Head Office  
 St. Louis, MO, U.S.A. Tel: (314) 527-3877 Fax: (800) 544-2570 International Fax: (314) 527-1445



Bussmann Information Fax (00 1) 314 527 1450