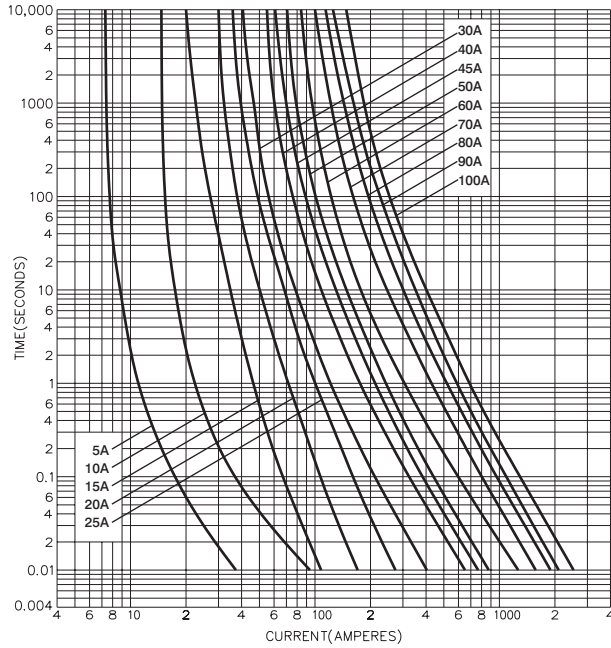


BS1361 Cylindrical House Service Cut-out Fuse Links

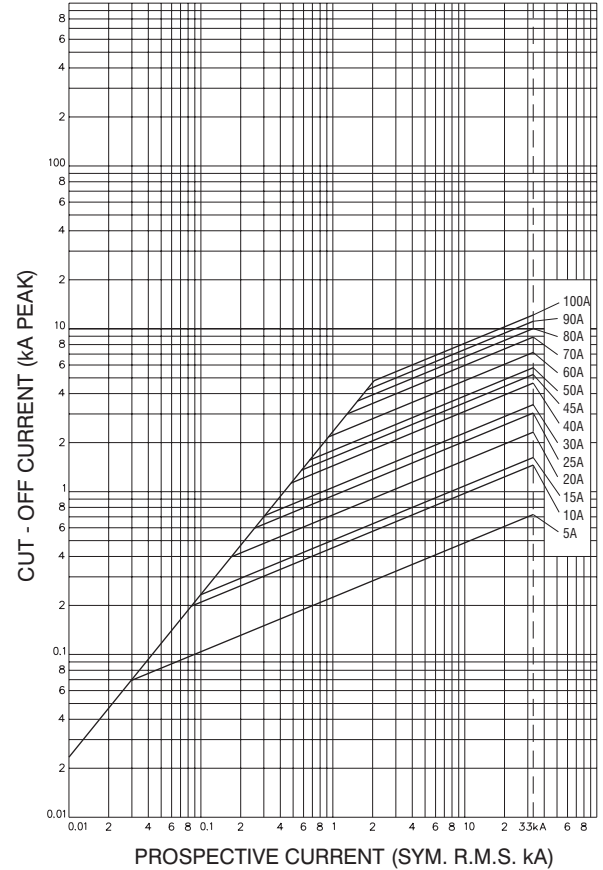
Ferrule End Cap 415V 5 to 100 Amp

KR85

Time-Current Characteristic Curves

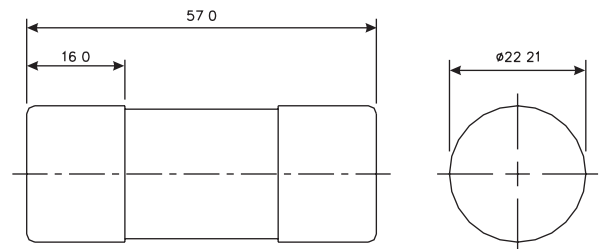


Cut-off Current Characteristics



Rating and Ordering Code	I ² t (Ampere ² Seconds)			Nom. Watts Loss
	Pre-Arcing	Total at 240V	Total at 415V	
5KR85	8.4	15	23.5	2.5
10KR85	84	150	235	3.3
15KR85	53	90	130	2.9
20KR85	215	360	510	2.6
25KR85	480	815	1,150	2.8
30KR85	1,000	2,700	5,700	3.0
40KR85	2,500	6,800	14,000	3.8
45KR85	3,600	9,880	20,500	3.8
50KR85	4,720	13,000	27,000	4.2
60KR85	9,100	25,000	52,000	4.3
70KR85	17,000	29,000	40,500	4.8
80KR85	24,500	41,500	58,500	5.4
90KR85	33,000	56,500	79,500	5.7
100KR85	43,500	73,500	105,000	6.1

Designed for use in conventional house service cut-outs, ASTA Certified and in accordance with BS1361: 1985. The ordering code is Rating followed by KR85 e.g. 40KR85. Carton quantity - 20 all ratings. Dimensional details in mm.



Bussmann Division
Cooper (U.K.) Ltd
 Burton-on-the-Wolds
 Leicestershire, LE12 5TH
 United Kingdom
 Tel: (44) (0)1509 88 27 37
 Fax: (44) (0)1509 88 27 86

This bulletin is intended to clearly present comprehensive product data and provide technical information that will help the end user with design applications. Bussmann reserves the right, without notice, to change design or construction of any products and to discontinue or limit distribution of any products. Bussmann also reserves the right to change or update, without notice, any technical information contained in this bulletin. Once a product has been selected, it should be tested by the user in all possible applications.

Head Office
 St. Louis, MO, U.S.A. Tel: (314) 527-3877 Fax: (800) 544-2570 International Fax: (314) 527-1445



Bussmann Information Fax (00 1) 314 527 1450