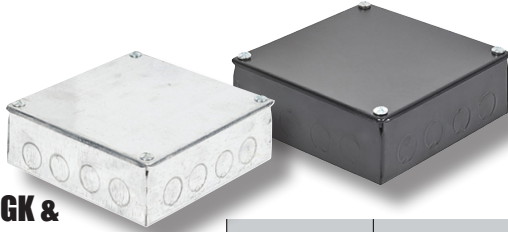


# Adaptable Boxes

- ✓ Available in galvanised steel or Black enamel
- ✓ Lids are secured by M5 x 16mm mushroom head screws
- ✓ BS4568 Part 2 product finish classification, Class 2 - Black enamelled inside and outside, Class 3 - Pre-galvanised sheet steel

**662GK & 662BK**



**663GK**



**664GK**



	662BK	662GK	662GP	663GK	663GP	664GK	664GP
<b>Description</b>	Adaptable Boxes						
<b>Pack Qty</b>	6			5		2	3
<b>Barcode</b>	5012739 615405	5012739 615429	5012739 615436	5012739 615467	5012739 615474	5012739 615504	5012739 615511
<b>Dimensions</b>	H6 x W6 x D2" / H150 x W150 x D50mm			H6 x W6 x D3" / H150 x W150 x D75mm		H6 x W6 x D4" / H150 x W150 x D100mm	
<b>K/O Plain All 20mm K/O</b>	4 K/O x 4 K/O		Plain	4 K/O x 4 K/O	Plain	4 K/O x 4 K/O	Plain
<b>Material</b>	Black enamel	Galv Steel					
<b>Product Weight</b>	569g	569g	569g	664g	664g	750g	750g
<b>Guarantee</b>	1 Year						
<b>Conforms To</b>	BS 4568						

**666GP & 666BP**



**932GK**



**943BP**



	666GK	666BP	666GP	932GK	932GP	942GK	942GP	943GK	943BP	943GP
<b>Description</b>	Adaptable Boxes									
<b>Pack Qty</b>	2			1		1		1		
<b>Barcode</b>	5012739 615542	5012739 615535	5012739 615559	5012739 615665	5012739 615672	5012739 615689	5012739 615696	5012739 615702	5012739 627651	5012739 615719
<b>Dimensions</b>	H6 x W6 x D4" / H150 x W150 x D100mm			H6 X W6 X D6" / H150 X W150 X D150mm		H9 X W4 X D2" / H225 X W100 X D50mm		H9 X W4 X D3" / H225 X W100 X D75mm		
<b>K/O Plain All 20mm K/O</b>	4 K/O X 4 K/O	Plain		5 K/O X 2 K/O	Plain	5 K/O X 3 K/O	Plain	5 K/O X 3 K/O	Plain	
<b>Material</b>	Galvanised Steel	Black Enamel	Galvanised Steel						Black Enamel	Galvanised Steel
<b>Product Weight</b>	987g	987g	570g	480g	480g	594g	594g	712g	712g	712g
<b>Guarantee</b>	1 Year									
<b>Conforms To</b>	BS 4568									