

Cable Gland Accessories

Entry Thread Washers

To maintain the IP rating of the equipment and gland it may be necessary to fit an entry thread washer at the gland interface.

Part No.		To Fit
Nylon	Fibre	Thread Size
M16NW	M16FW	M16
M20NW	M20FW	M20
M25NW	M25FW	M25
M32NW	M32FW	M32
M40NW	M40FW	M40
M50NW	M50FW	M50
M63NW	M63FW	M63
M75NW	M75FW	M75



Fibre



Nylon

Serrated 'Shakeproof' Washers

Internal serrated washers, manufactured from mild steel, are used on cable gland entry threads to dampen the vibrations of the cable gland or equipment assembly which may loosen the cable gland or locknut.

Manufactured to suit thread specification Isometric (ISO) to BS3643:1981

Zinc plated and stainless steel available to order.

Part No.	To Fit Thread Size
M20SW	M20
M25SW	M25
M32SW	M32
M40SW	M40
M50SW	M50
M63SW	M63



Brass Reducers and Adapters

SWA brass adaptors and reducers provide an effective method of connection between dissimilar threads or sizes. Reducers reduce the thread entry diameter of an enclosure to accept a gland or fitting with a smaller or alternative thread. It should be noted that no more than one adaptor or reducer should be used at any one time.

Increased safety versions also available - suffix part numbers EExe  ATEX

Ordering details:

Male Female

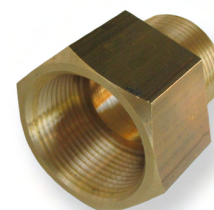
M25M x M20F

Male type & size
M or PG

Female type & size
M or PG

- Thread specification
(ISO is standard)

Suffix -ET
-NPT
-BSP



Brass Reducer



Brass Adaptor

Material: Brass BS 2874:1985 CZ121

Thread specification: Isometric (ISO), PG, Imperial (ET), National Pipe Thread (NPT), British Standard Pipe (BSP)

ISO Metric Thread World-wide most commonly used type thread

Characterized by its major diameter and its pitch

Designated by the letter M followed by the value of the nominal diameter and the pitch, both expressed in millimetres and separated by the multiplication sign 'x'

NPT Thread = National Pipe Thread

Taper rate for all NPT threads is 1/16

The taper on NPT threads allows them to form a seal when torqued as the flanks of the threads compress against each other, as opposed to straight thread fittings

PG Thread = Panzer-Gewinde (also Panzer-Rohr-Gewinde) German thread type

Depth of thread smaller than NPT or Metric, but larger flank angle