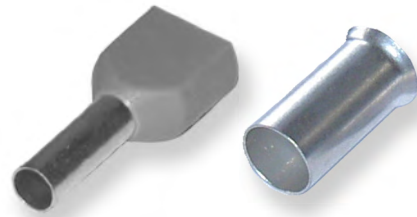
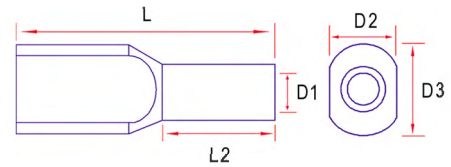


Bootlace Ferrules



Insulated Bootlace Ferrules - Twin Entry

Part No.	mm ²	Colour	Dimensions mm				
			L	D1	D2	D3	L2
0.50-8IBLF/2	0.50	White	15.0	1.50	2.5	4.7	8.0
0.75-8IBLF/2	0.75	Grey	15.0	1.80	2.8	5.0	8.0
1.0-8IBLF/2	1.00	Red	15.0	2.05	3.4	5.4	8.0
1.5-8IBLF/2	1.50	Black	16.0	2.30	3.6	6.6	8.0
2.5-8IBLF/2	2.50	Blue	18.5	2.80	4.2	7.8	10.0
4.0-9IBLF/2	4.00	Grey	23.0	3.70	4.9	8.8	12.0
6.0-14IBLF/2	6.00	Yellow	26.0	4.80	6.9	10.0	14.0
10-14IBLF/2	10	Red	26.0	6.40	7.2	13.0	14.0
16-14IBLF/2	16	Blue	30.0	8.30	9.6	18.4	14.0



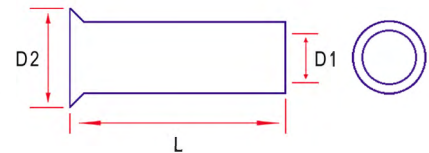
Pack Quantity: 100 Voltage: Max 300V

Approval:



Uninsulated Bootlace Ferrules

Part No.	mm ²	Dimensions mm		
		D1	D2	L
0.50-10UBLF	0.50	1.0	2.1	10.0
0.75-8UBLF	0.75	1.2	2.3	8.0
1.0-8UBLF	1.00	1.4	2.5	8.0
1.0-10UBLF	1.00	1.4	2.5	10.0
1.5-8UBLF	1.50	1.7	2.8	8.0
1.5-10UBLF	1.50	1.7	2.8	10.0
2.5-10UBLF	2.50	2.2	3.4	10.0
4.0-9UBLF	4.00	2.8	4.0	9.0
6.0-15UBLF	6.00	3.5	4.7	15.0
10-15UBLF	10	4.5	5.8	15.0
16-15UBLF	16	5.8	7.5	15.0
25-18UBLF	25	7.3	9.5	18.0
35-18UBLF	35	8.3	11.0	18.0
50-25UBLF	50	10.3	13.0	25.0



Pack Quantity: 100 Voltage: Max 300V

See pages 163 and 164 for recommended tooling.