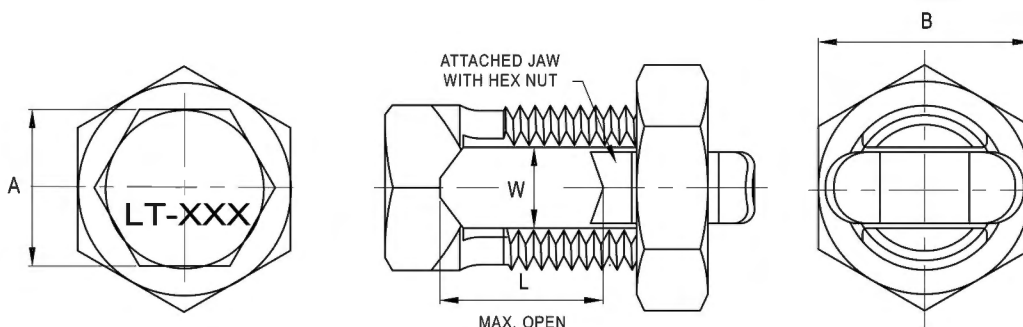
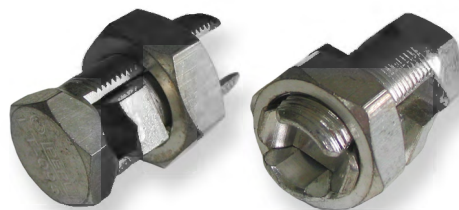


Mechanical Connectors

Line Taps

Material: Brass BS2874 - CZ112

Finish: Nickel plated



Part No.	Conductor Range		Dimensions mm			
	Min (mm ²)	Max (mm ²)	Body A/F A	Nut A/F B	Width W	Length L
LT610	6	10	10.0	12.6	3.7	7.4
LT10	10	16	12.0	16.0	5.5	8.5
LT16	16	25	14.0	18.0	6.9	9.0
LT25	25	35	15.0	20.0	8.4	11.0
LT35	35	50	18.0	24.0	9.7	12.0
LT50	50	70	20.0	25.0	11.2	14.0
LT70	70	95	22.0	28.0	13.6	18.0
LT95	95	120	25.0	33.0	16.0	24.0
LT120	120	150	28.0	36.0	19.0	30.0