



EarthingNuts™ So simple it's nuts to use anything else!

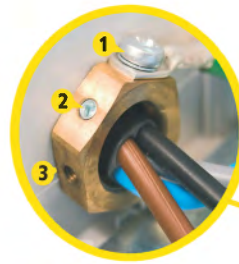
EarthingNuts™ will change the way you terminate and earth metal cable glands forever!

Electrical Industry Awards Winner - Innovative Power Products

- No extra drilling required - saving up to **60%** on fitting time than conventional methods and does not compromise the enclosure IP rating
- Improved safety during fitting and in service
- Fitted right first time every time
- Replaces the traditional “banjo” earth-tag and lock-nut
- Unique cutting teeth bite into the box wall so that the gland can be tightened with one tool from the outside
- Teeth provide voltage equalising connection to EMI shielding
- Enable a direct high integrity connection for protective earthing
- Grub screw secures nut to the gland ensuring continuity, even if the enclosure becomes damaged



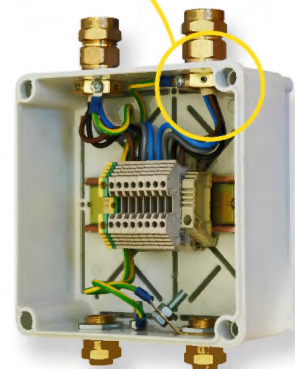
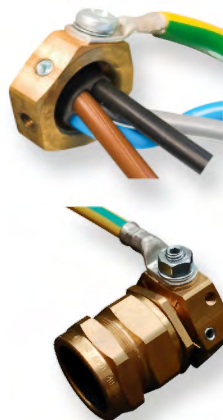
Scan to view the demo



- 1 Front facing connection
- 2 Locking Grubscrew
- 3 Anti rotation teeth

Part No.	To Suit Thread Size (mm)	Pack Quantity
BELN20-PK2	20	2
BELN20-PK10	20	10
BELN25-PK2	25	2
BELN25-PK10	25	10
BELN32-PK2	32	2
BELN40-PK1	40	1
BELN50-PK1	50	1
BELN63-PK1	63	1
BELN75-PK1	75	1

Supplied with grub screw(s), connecting bolt, & Allen key



Patented in the UK and Ireland No. EP1790053. Other international patents granted and pending. The Squirrel logo is a Registered Trade Mark of Cable Terminology Ltd