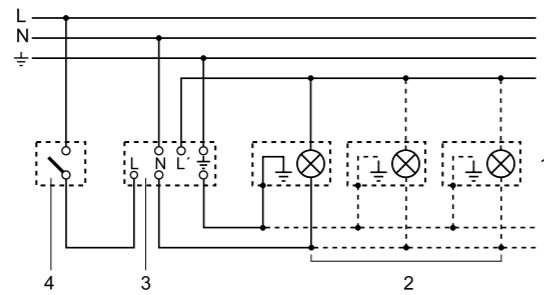


Wiring Diagrams for Motion Detectors



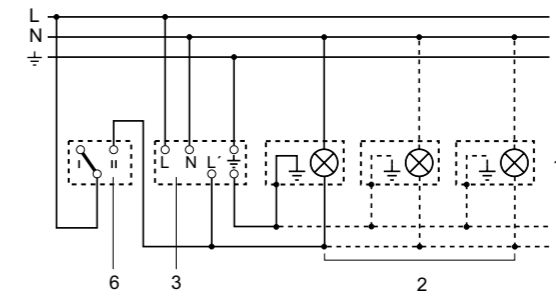
Light without existing neutral conductor



- ❶ e.g. 1 - 4 x 100 W incandescent lamps
- ❷ Load, lighting
- ❸ Sensor connection terminals
- ❹ Indoor switch

Connection by a double-throw switch for permanent light and automatic mode

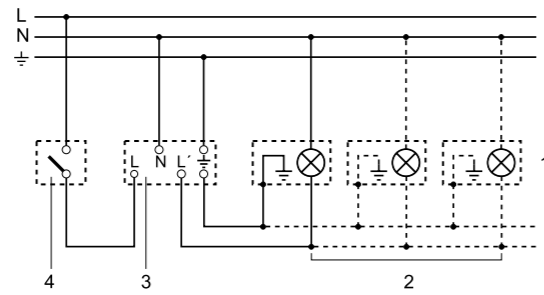
Setting I:
Automatic mode
Setting II:
Manual mode, light ON permanently



- ❶ e.g. 1 - 4 x 100 W incandescent lamps
- ❷ Load, lighting
- ❸ Sensor connection terminals
- ❹ Indoor double-throw switch, automatic, permanent light

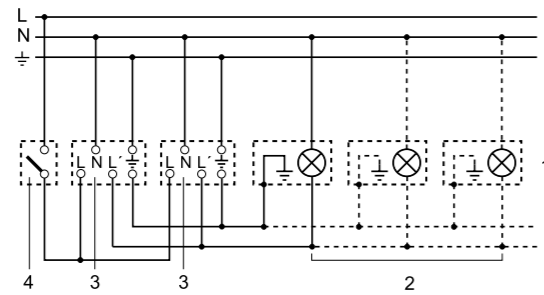
Note: The system cannot be switched OFF, it is only possible to select operation at setting I or II.

Light with existing neutral conductor



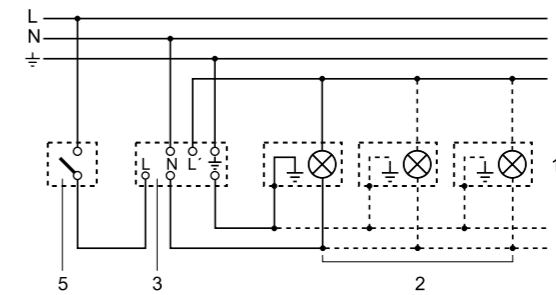
- ❶ e.g. 1 - 4 x 100 W incandescent lamps
- ❷ Load, lighting
- ❸ Sensor connection terminals
- ❹ Indoor switch

Several sensors connected in parallel



- ❶ e.g. 1 - 4 x 100 W incandescent lamps
- ❷ Load, lighting
- ❸ Sensor connection terminals
- ❹ Indoor switch

Connection using two-circuit single-interruption switches for manual and automatic operation



- ❶ e.g. 1 - 4 x 100 W incandescent lamps
- ❷ Load, lighting
- ❸ Sensor connection terminals
- ❹ Indoor two-circuit single interruption switch, manual, automatic