

Specialised Wiring Accessories Ltd. have built their reputation over many years of continued development to become one of the leading exponents in the Cable Wiring Accessory market, setting the standards of performance for quality service, keen pricing structures and a fulfillment system second to none.

With solid expertise in technical design and innovation, manufacturing and testing, SWA prove time and again that their knowledge and attention to detail can be trusted to provide you with the right products, to your budgets and in the timescale you require. Our product catalogue continues to expand and our technical sales engineers will be delighted to work alongside you to ensure your order requirements are implemented successfully.

Our purpose built warehousing facility, which is close to the motorway network carries enormous stock across hundreds of lines, ready to be despatched on order.

SWA is the choice of leading electrical companies, both supplying and servicing the electrical trade and industry.

Make the right connection call us now

SWA strives to continually improve the effectiveness of our Quality, Environmental and H & S Management System through continual review and monitoring of objectives and targets.



Leaflet Reference: SWASFG2x 03.16



Information & Sales : 01453 844333

Abbey Mills, Charfield Road, Kingswood, Wotton Under Edge, Glos. GL12 8RL
e: sales@swaonline.co.uk w: www.swaonline.co.uk



SWA's revolutionary SmartFit Glands Fast Action - just push and twist

SmartFitGland™
Enjoy incredible time saving
and increased profitability

- Time saving (just snaps into place)
- Locknut or threaded hole not required
- Push & twist gland to fit in seconds
- IP68 rated (5 bar, 30 mins)
- Flammability: UL94 V2
- UL Approved: E-199260
- VDE (0619) Approved: DIN EN 62444
- Fitted with Neoprene seal - so never perishes
- PA6 Polyamide construction
- Perfectly fits wall thickness 0.5mm-4mm
- Easy removal with separate tool
- Red, Grey, Black, White and Nickel-Plated Brass versions in 20S, 20, 25, 32 or 40mm sizes (16mm available on request)



All the right connections!®

SmartFitGland™

Specialised Wiring Accessories' new fast-action SmartFit Glands provide a revolutionary way of fixing cable glands that promises huge time savings for electricians.

Unlike traditional glands, SmartFit glands can be fitted in seconds using a simple push and twist action and working solely from the outside of enclosures. No locknuts are used and there's not even any need for the enclosure hole to be threaded.

SmartFit Glands use an ingenious combination of locking teeth and a spring-loaded collar to make installation both faster and easier. The new glands are dust-tight and are protected against the prolonged effects of immersion (5 bar, 30 minutes), earning the SWA range the maximum IP68 rating.

Fast fit

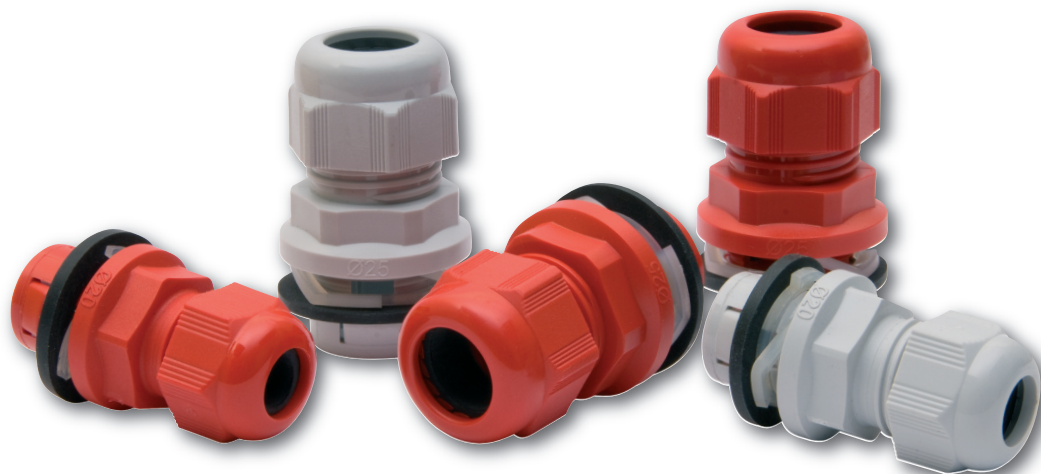
The SmartFit Gland is pushed through the hole from the outside, the locking teeth simply spring out to engage against the inside wall of the enclosure: with pressure from the spring-loaded collar on the outside of the enclosure, the gland just snaps into place.

Then a few further turns of the body of the gland are all that is needed to compress the collar and clamp it firmly against the gland's built-in seal on the outside of the enclosure wall. Finally, the cable is inserted and the conventional dome-headed nut is tightened to complete the installation.

Remove and re-use

If the SmartFit gland needs to be removed, this can be done using a separate tool. By pushing the cone-shaped adaptor onto the gland inside the enclosure, the locking teeth are compressed and the gland can simply be lifted out of the hole. Again, the process takes just a couple of seconds and the gland can be re-used.

The range of SWA SmartFit Glands comes in the popular 20S, 20, 25, 32 or 40mm sizes for cable diameters from 6 - 28mm. The built-in seal is made of Neoprene, so it never perishes. The glands are a perfect fit for wall thicknesses from 0.5mm up to 4mm. Red, Grey, Black, White and Nickel-Plated Brass versions are available.



Patent No.: DE 10 2013 218 733 A1

The Fast Action Cable Gland from SWA

All the right connections!®

- Time Saving - Just snaps into place
- Easy removal with a separate tool
- Fits wall thickness 0.5 - 4mm
- IP68 rated

Order Code	Description	Cable Dia Range (mm)	Pk Qty
CG/SF-20SR	20Smm Red SmartFit Cable Gland	6 - 12	10
CG/SF-20SG	20Smm Grey SmartFit Cable Gland	6 - 12	10
CG/SF-20SB	20Smm Black SmartFit Cable Gland	6 - 12	10
CG/SF-20SW	20Smm White SmartFit Cable Gland	6 - 12	10
CG/SF-20R	20mm Red SmartFit Cable Gland	7 - 13	10
CG/SF-20G	20mm Grey SmartFit Cable Gland	7 - 13	10
CG/SF-20B	20mm Black SmartFit Cable Gland	7 - 13	10
CG/SF-20W	20mm White SmartFit Cable Gland	7 - 13	10
CG/SF-25R	25mm Red SmartFit Cable Gland	11 - 17	5
CG/SF-25G	25mm Grey SmartFit Cable Gland	11 - 17	5
CG/SF-25B	25mm Black SmartFit Cable Gland	11 - 17	5
CG/SF-25W	25mm White SmartFit Cable Gland	11 - 17	5
CG/SF-32G	32mm Grey SmartFit Cable Gland	15 - 21	2
CG/SF-40G	40mm Grey SmartFit Cable Gland	19 - 28	1
CGB/SF-20S	20Smm NP Brass SmartFit Cable Gland	6 - 12	10
CGB/SF-20	20mm NP Brass SmartFit Cable Gland	7 - 13	10
CGB/SF-25	25mm NP Brass SmartFit Cable Gland	11 - 17	5
CGB/SF-32	32mm NP Brass SmartFit Cable Gland	15 - 21	2
CGB/SF-40	40mm NP Brass SmartFit Cable Gland	19 - 28	1
CGSFA-2025	20mm-25mm Adaptor Removal Tool		2
CGSFA-3240	32mm-40mm Adaptor Removal Tool		2



SmartFit Polyamide



SmartFit Nickel-Plated Brass



SmartFit Removal Tool

For a quick and informative example of how our SmartFit Gland works, scan the QR code to view the SmartFit Gland demonstration on YouTube or add the following code into your browser

<http://www.youtube.com/watch?v=Xirkm215s1s>

