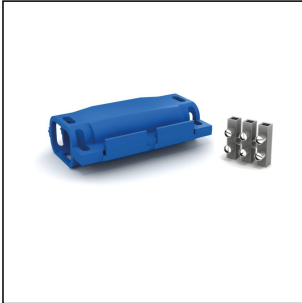


## SHARK 316W

Gel insulated join



Products may differ in size, colour and appearance to those shown. If you require further information or customisation, please contact us directly.



<b>Material</b>	Polyamide
<b>Filling</b>	Silicone
<b>Temp. range min</b>	-20 °C
<b>Temp. range max</b>	90 °C
<b>Glow wire test</b>	self-extinguishing
<b>Voltage</b>	0,6 kV - 1 kV
<b>Quantity of cable</b>	3
<b>Order no. UK</b>	SH0316W
<b>Type</b>	SHARK 316W
<b>Packing unit</b>	1
<b>ETIM-Classification</b>	EC001169

Remarks:

Ampere: 30

Cable Size: 3 core

LxBxH: 69x180x40 mm

Description:

SHARK SMARTSHARK Pre-filled gel insulated straight joint. Includes 3 pole terminal block.

Additional Info:

Ready to use, re-enterable, no mixing or pouring, immediate operation, excellent electrical insulation, good mechanical strength, no expiry date.

13.10.2020

Your Contact:

**WISKA UK Ltd.**

Unit 7, Hurling Way · St. Columb Major Business Park · TR9 6SX, St. Columb Major, Cornwall · Great Britain

☎ +44-12-08816062 · 📠 +44-12-08816708

info@wiska.co.uk · www.wiska.co.uk