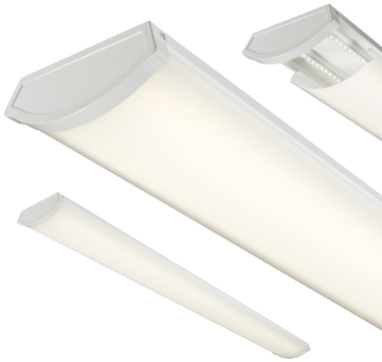


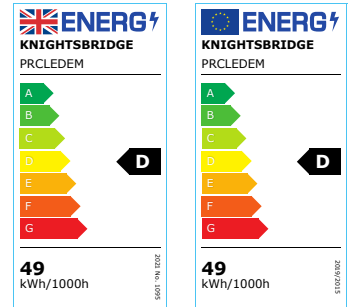
## DATASHEET



### PRCLEDEM

230V IP20 5ft 49W LED Surface mount- emergency

[www.mlaccessories.co.uk](http://www.mlaccessories.co.uk)



| MLA PART CODE                 | PRCLEDEM   |
|-------------------------------|--|
| DESCRIPTION                   | 230V IP20 5ft 49W LED Surface mount- emergency                   |
| NET WEIGHT (KG)               | 3.39   |
| FINISH                        | White  |
| DIFFUSER                      | Opal   |
| DIMENSIONS (MM)               | Length - 1490<br>Width - 198<br>Projection - 68                  |
| CONSTRUCTION                  | Construction - Pressed steel<br>Construction 2 - & polycarbonate |
| CLASS                         | I  |
| IP RATING                     | IP20   |
| WATTAGE (W)                   | 49   |
| LAMP TECHNOLOGY               | LED  |
| LAMP INCLUDED                 | Yes  |
| LUMENS (LM)                   | 6110   |
| LUMENS LIGHT SOURCE ONLY (LM) | 7750   |
| LUMEN TOLERANCE               | 5%   |
| EFFICACY (LM/W)               | 153.455  |
| LUMENS EMERGENCY MODE (LM)    | 600  |
| CIRCUIT WATTAGE (W)           | 50.5   |
| CCT                           | 4000K  |
| LIGHT COLOUR                  | Cool White   |
| CRI                           | >80  |
| SDCM                          | <6   |
| RUNNING CURRENT (A)           | 0.228  |
| DISPLACEMENT FACTOR           | >0.9   |
| SVM                           | 0.81   |
| PST-LM                        | 0.037  |
| BEAM ANGLE (DEGREES)          | 120  |

|  |   |
|--|---|
| LIFE SPAN (HRS)                          | 30,000  |
| L70B50 LIFESPAN (HRS)                    | 50,000  |
| DIMMABLE                                 | No  |
| EMERGENCY                                | Maintained / Non-maintained / Switched  |
| OPERATING TEMPERATURE                    | -15~45°C  |
| INPUT VOLTAGE                            | 230V 50Hz   |
| DRIVER                                   | DRIVER TYPE - Constant Current<br>MAX. OUTPUT - 50W<br>OUTPUT VOLTAGE - 29-43V<br>OUTPUT CURRENT - 1200mA<br>POWER FACTOR - 0.95<br>EFFICIENCY FULL LOAD - 88.76<br>ISOLATION - SELV<br>AMBIENT TEMPERATURE (Ta) - -15~45°C<br>CASE TEMPERATURE (Tc) - 70°C |
| BATTERY INCLUDED                         | Yes   |
| WARRANTY                                 | 5year(s)  |
| WARRANTY INFORMATION                     | (excluding battery)   |
| MANUFACTURED IN ACCORDANCE WITH          | BS EN 60598   |
| ORIGIN OF MANUFACTURE                    | China   |
| DECLARATION OF CONFORMITY (HELD ON FILE) | Yes   |
| EAN                                      | 5055832973935   |

Date Created: 01/03/2023 11:47

