

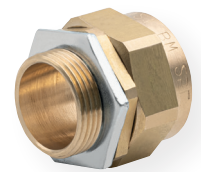
2 Part BW Industrial Brass Glands



- Tested and approved to BS6121 Pt1
- Manufactured in cast brass to BS2874
- Supplied in kit form with Shrouds, Earth Tags & Steel Locknuts
- Standard 1.5mm Thread Pitch

Part Number	Description	Gland Size (mm)	Thread Length (mm)	Max Outer Cable Dia. (mm)	Max Inner Cable Dia. (mm)	Armour Wire Dia.(mm)	Pack Qty
QBW20S	BW Brass Gland Pack 20mm Small	20	10	16.1	11.6	0.9/1.25	2
QBW20	BW Brass Gland Pack 20mm	20	10	21.1	13.9	0.9/1.25	2
QBW25	BW Brass Gland Pack 25mm	25	10	27.4	19.9	1.25/1.6	2
QBW32	BW Brass Gland Pack 32mm	32	10	34.4	26.2	1.6/2.0	2
QBW40	BW Brass Gland Pack 40mm	40	15	42.4	32.1	1.6/2.0	1
QBW50S	BW Brass Gland Pack 50mm Small	50	15	50.1	38.1	2.0/2.5	1
QBW50	BW Brass Gland Pack 50mm	50	15	55.7	44	2.0/2.5	1
QBW63S	BW Brass Gland Pack 63mm Small	63	15	62.4	50	2.5	1
QBW63	BW Brass Gland Pack 63mm	63	15	68.2	55.9	2.5	1
QBW20S-LSF	BW Brass Gland LSF Pack 20mm Small	20	10	16.1	11.6	0.9/1.25	2
QBW20-LSF	BW Brass Gland LSF Pack 20mm	20	10	21.1	13.9	0.9/1.25	2
QBW25-LSF	BW Brass Gland LSF Pack 25mm	25	10	27.4	19.9	1.25/1.6	2
QBW32-LSF	BW Brass Gland LSF Pack 32mm	32	10	34.4	26.2	1.6/2.0	2
QBW40-LSF	BW Brass Gland LSF Pack 40mm	40	15	42.4	32.1	1.6/2.0	1
QBW50-LSF	BW Brass Gland LSF Pack 50mm	50	15	55.7	44	2.0/2.5	1
QBW63-LSF	BW Brass Gland LSF Pack 63mm	63	15	68.2	55.9	2.5	1

3 Part BW Industrial Brass Glands



- Tested and approved to BS6121 Pt1
- Manufactured in cast brass to BS2874

Part Number	Description	Gland Size (mm)	Max Inner Cable Dia. (mm)	Max Outer Cable Dia. (mm)	Armour Wire Dia. (mm)	Pack Qty
QBW20SS	BW Brass Gland Pack 20mm S/Small	20	9	13.5	0.9	2
QBW20S-3	BW Brass Gland Pack 20mm Small	20	12.5	16.5	0.9/1.25	2
QBW20-3	BW Brass Gland Pack 20mm	20	14.5	20.5	0.9/1.25	2
QBW25-3	BW Brass Gland Pack 25mm	25	20	26.5	1.25/1.6	2
QBW32-3	BW Brass Gland Pack 32mm	32	26.3	33.5	1.6/2	2
QBW40-3	BW Brass Gland Pack 40mm	40	33	41.5	1.6/2	1