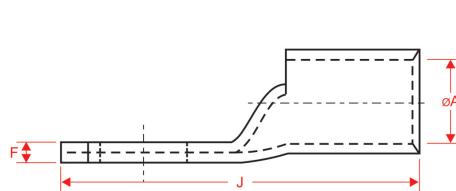
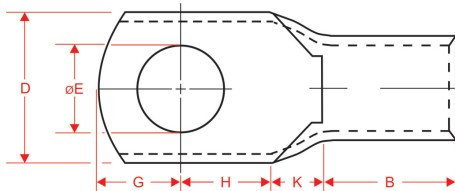


Copper Tube Terminals

Specification Requirements

- Finish: Electro tinned
- Copper conductivity to 97% IACS
- Copper tube double annealed
- All terminals up to 240mm² will have bell mouth cable entrance
- Working temperature up to 180°C (Standard)



Part Number	Cable Size (mm ²)	Stud Size (mm)	ØA (mm)	B (mm)	D (mm)	ØE (mm)	F (mm)	G (mm)	H (mm)	J (mm)	K (mm)	Pack Qty
QCT015-3	1.5	3	1.8	5	8	3.2	1	4	5	16	2	25
QCT015-4	1.5	4	1.8	5	8	4.2	1	4	5	16	2	25
QCT015-5	1.5	5	1.8	5	8	5.2	1	4	5	16	2	25
QCT025-3	2.5	3	2.4	5	8	3.2	1	4	7	18	2	25
QCT025-4	2.5	4	2.4	5	8	4.2	1	4	7	18	2	25
QCT025-5	2.5	5	2.4	6	10	5.2	0.8	4	7	20	2	25
QCT025-6	2.5	6	2.4	9	10	6.5	0.8	4	7	21.5	1.5	25
QCT04-6	4	6	3.1	6	4.8	6.5	1.1	5	7	20	2	25
QCT04-8	4	8	3.1	9	12	8.2	1	6	7	24	2	25
QCT04-10	4	10	3.1	11	15	10.2	0.8	8	7	28	2	25
QCT06-4	6	4	3.8	6	10	4.2	1.2	5	9	23	3	25
QCT06-5	6	5	3.8	6	10	5.2	1.2	5	9	23	3	25
QCT06-6	6	6	3.8	9	12	6.5	1	6	9	27	3	25
QCT06-8	6	8	3.8	9	12	8.4	1	6	9	27	3	25
QCT06-10	6	10	3.8	11	15	10.2	1	8	9	31	3	25
QCT10-5	10	5	4.5	5	8.7	5.2	1.42	4	12	24	3	10
QCT10-6	10	6	4.5	6	12	6.2	1.3	5	12	26	3	10
QCT10-8	10	8	4.5	9	12	8.4	1.03	6	12	30	3	10
QCT10-10	10	10	4.5	10	19	10.5	1.8	10	12	35	3	10
QCT10-12	10	12	4.5	12	19	13	1.8	12	12	39	3	10
QCT16-6	16	6	5.5	9	11	6.5	1.4	5	15	33	4	10
QCT16-8	16	8	5.5	9	11	8.4	1.31	6	15	34	4	10
QCT16-10	16	10	5.5	10	19	10.3	1.8	10	15	39	4	10
QCT16-12	16	12	5.5	12	19	13	1.8	12	15	43	4	10
QCT25-5	25	5	7	6	12.6	5.2	2	5	15	30	4	5
QCT25-6	25	6	7	6	12.6	6.5	2	5	15	30	4	5
QCT25-8	25	8	7	9	16	8.4	1.6	6	15	34	4	5
QCT25-10	25	10	7	10	17.5	10.5	1.5	10	15	39	4	5
QCT25-12	25	12	7	12	17.5	13	1.5	12	15	43	4	5
QCT35-6	35	6	8.6	8	15.7	6.4	2.2	8	18	39	5	5
QCT35-8	35	8	8.6	8	15.7	8.4	2.2	8	18	39	5	5
QCT35-10	35	10	8.6	11	16.2	10.5	2	9	18	43	5	5
QCT35-12	35	12	8.6	10.8	18	13	1.8	9.2	18	43	5	5
QCT50-6	50	6	9.6	8.5	17.4	6.4	2.4	8.5	23	46	6	5
QCT50-8	50	8	9.6	8.5	17.4	8.4	2.4	8.5	23	46	6	5
QCT50-10	50	10	9.6	10	17.4	10.5	2.4	10	23	49	6	5
QCT50-12	50	12	9.6	13	17.2	13	2.4	12	23	54	6	5

Part Number	Cable Size (mm ²)	Stud Size (mm)	ØA (mm)	B (mm)	D (mm)	ØE (mm)	F (mm)	G (mm)	H (mm)	J (mm)	K (mm)	Pack Qty
QCT70-6	70	6	11.2	13	22	6.5	3	11	23	53	6	5
QCT70-8	70	8	11.2	11	22	8.4	3	11	23	52	7	5
QCT70-10	70	10	11.2	11	21.5	10.5	3	11	23	52	7	5
QCT70-12	70	12	11.2	11	21.5	13	3	11	23	52	7	5
QCT70-14	70	14	11.2	12.5	25	15	3	12.5	23	55	7	5
QCT95-8	95	8	13.5	12	21.5	8.4	3.9	12	30	63	9	5
QCT95-10	95	10	13.5	12	25	10.5	3.9	12	30	63	9	5
QCT95-12	95	12	13.5	12	25	13	3.9	12	30	63	9	5
QCT95-14	95	14	13.5	14	28	4.7	3.9	14	30	67	9	5
QCT95-16	95	16	13.5	16	28	17	3.9	16	30	71	9	5
QCT120-8	120	8	15	12	27.5	8.4	3.9	12	25	59	10	5
QCT120-10	120	10	15	12	27.5	10.5	3.9	12	25	59	10	5
QCT120-12	120	12	15	12	27.5	13	3.9	12	25	59	10	5
QCT120-14	120	14	15	15	27.5	15	3.9	15	25	65	10	5
QCT120-16	120	16	15	15	27.5	17	3.9	15	25	65	10	5
QCT120-20	120	20	15	15	27.5	21	3.9	15	25	65	10	5
QCT150-8	150	8	16.5	14	30	8.4	4.38	14	26	65	11	5
QCT150-10	150	10	16.5	14	30	10.5	4.38	14	26	65	11	5
QCT150-12	150	12	16.5	14	30	13	4.38	14	26	65	11	5
QCT150-14	150	14	16.5	14	30	15	4.38	14	27	69	11	5
QCT150-16	150	16	16.5	16	30	17	4.38	16	27	77	11	5
QCT150-20	150	20	16.5	20	30	21	4.38	17	27	77	11	5
QCT185-10	185	10	19	14	34	10.5	4	14	30	68	12	5
QCT185-12	185	12	19	14	34	13	4	14	30	68	12	5
QCT185-14	185	14	19	14	34	15	4	14	30	68	12	5
QCT185-16	185	16	19	16	34	17	4	16	28	72	12	5
QCT185-20	185	20	19	18	34	21	4	18	28	76	12	5
QCT240-10	240	10	21	15	37.6	10.5	5	15	33	77	14	5
QCT240-12	240	12	21	15	37.6	13	5	15	33	77	14	5
QCT240-14	240	14	21	15	37.6	15	5	15	33	77	14	5
QCT240-16	240	16	21	19	37.6	17	5	19	33	85	14	5

Copper Tube Butt Splices



Part Number	Description	Length (mm)	Outer Diameter (mm)	Max Cable Dia. (mm ²)	Pack Qty
QB1-5	Copper Butt Splice Terminal 1.5mm ²	12	3.7	1.8	25
QB2-5	Copper Butt Splice Terminal 2.5mm ²	15	4	2.3	25
QB4-6	Copper Butt Splice Terminal 4-6mm ²	15	5.5	3.8	25
QB10	Copper Butt Splice Terminal 10mm ²	20	6	4.5	10
QB16	Copper Butt Splice Terminal 16mm ²	20	6.8	5.5	10
QB25	Copper Butt Splice Terminal 25mm ²	32	8.8	6.8	5
QB35	Copper Butt Splice Terminal 35mm ²	36	10.8	8.6	5
QB50	Copper Butt Splice Terminal 50mm ²	40	12	9.6	5
QB70	Copper Butt Splice Terminal 70mm ²	40	14.7	11.2	5
QB95	Copper Butt Splice Terminal 95mm ²	45	17.5	13.5	5
QB120	Copper Butt Splice Terminal 120mm ²	45	19	15	5
QB150	Copper Butt Splice Terminal 150mm ²	55	21	16.5	5
QB185	Copper Butt Splice Terminal 185mm ²	65	23.5	19	5
QB240	Copper Butt Splice Terminal 240mm ²	80	26	21	5

Note 1
Blank terminal palms are available from 10mm² to 240mm².

Note 2
When using flexible fine strand or welding cable it may be necessary to select the next larger terminal size, i.e. 70mm² fine strand, select 95mm² terminal.