



# Technical Data

## 13 Amp RCD Fused Connection Unit

### Brief product description:

The subtle design will blend with any décor - suitable for domestic or commercial applications. There is an integrated RCD to prevent the leakage of electrical current.

### Features:

- White moulded round edge, sleek and slim with softly rounded edges
- Screw covers for faultless appearance
- Easy to install, supplied with fixing screws and installation instructions

### Technical Specifications

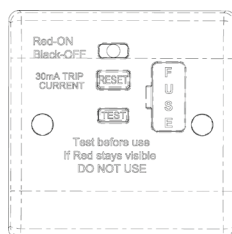
Standard(s)	BS 7288: 1990
Rating	13A
Maximum Load	3120 Watts, 240V AC
RCD Rating	30mA, Trip Speed 40 ms
RCD Type	Latching Type
Terminal Capacity	4 x 1.0mm <sup>2</sup> , 4 x 1.5mm <sup>2</sup> , 2 x 2.5mm <sup>2</sup> & 1 x 4.0mm <sup>2</sup>
Mounting Box Depth (min)	35mm, 10mm spacer provided for shallower boxes

### Product Images

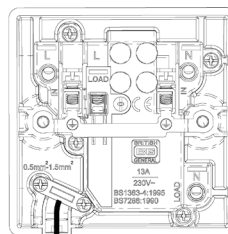


855RCD

### Line Diagrams



855RCD



# 13 Amp RCD Fused Connection Unit

## Packaging Information

Cat No.	Description	Packaging Type			Pack Quantity			Barcode		
		Product	Inner Box	Outer Box	Each	Inner Box	Outer Box	Individual	Inner Box	Outer Box
855RCD	13A RCD Fused Connection Unit	Printed Box + Leaflet	Nexus Inner	Nexus Outer	1	10	100	5050765008273	5050765008280	5050765008297

## Weights & Dimensions

Cat No.	Description	Dimensions (L x W x D) mm			Weight (kg)			CMB (m <sup>3</sup> )
		Unpacked Product	Inner Box	Outer Box	Unpacked Product	Inner Box	Outer Box	Outer Box
855RCD	13A RCD Fused Connection Unit	8.6 x 8.6 x 3.8	19 x 23 x 10	31 x 40 x 26	0.185	1.99	12.56	XXXXXXXX

## Safety Advice

### What is a safety RCD spur?

Your safety RCD spur continuously monitors the power supply to any electrical appliance hardwired into it; and cuts off the power within 40 milliseconds if an earth current fault is detected. This is fast enough to prevent a fatal electrical shock. Electrical appliances can become dangerous if the wiring becomes loose, if they or their power cords become damaged or if they get wet. Electrocutation is also possible if fingers, wet hair or other conductive bodies enter the appliance. In all these cases your safety RCD spur will instantly cut off the electricity before you or a member of your family receives a potentially fatal electric shock.

### Latching operation

If the unit loses supply - perhaps in a power cut or when a hazardous earth fault occurs - the RCD will trip and cut the power supply. When the supply resumes through the RCD, the appliance will revert to the original state, making it particularly useful for protecting indoor appliances such as refrigeration units.

**Due to latching operation, for safety this product should not be used for outdoor power tools and garden equipment.**

**Service conditions** - This RCD is only suitable for use under the following conditions of service:

- an ambient temperature range of -5 °C to +40 °C, with an average value not exceeding +35 °C over one full day;
- An altitude not exceeding 2 000 m above sea level;
- An atmosphere not subject to excessive pollution by smoke, chemical or flammable fumes; salt-laden spray; prolonged periods of high humidity or other abnormal conditions.
- Not suitable for exposure to direct radiation from the sun or other source of heat likely to raise the temperature above the designated ambient, nor may it be suitable for subjection to excessive vibration.

**Where service conditions differ from those prescribed above the advice of the manufacturer or responsible vendor should be sought.**

An RCD Spur should not be used as a substitute for basic electrical safety.

## Installation Information

### Safety Warning

Before use please read carefully and use in accordance with these safety wiring instructions.

Before commencing any electrical work ensure the supply **is switched off at the mains**. Either by switching off the consumer unit or by removing the appropriate fuse.

Wiring should be in accordance with the latest edition of the IEE regulations (BS 7671).

### Wire Identification – Twin & Earth Cable

**EARTH** = Green/Yellow Slewing

**NEUTRAL** = Black (pre Apr 04) / Blue (after Apr 04)

**LIVE** = Red (pre Apr 04) / Brown (after Apr 04)



**Technical Helpline: 03300 249 279**

**If in doubt consult a competent electrician.**

The ends of the individual conductors should have the insulation removed by approx. 12mm. Any bare earth conductors should be sleeved to within 12mm of the ends. (These details are for general information only and conductor lengths may need to be trimmed in certain installations).

# 13 Amp RCD Fused Connection Unit

## Installation Information

### General Installation Instructions

Switch off the power supply at the consumer unit and remove the fuse from the circuit.

### If Using The New Product To Replace An Old One

1. Release the faceplate retaining screws and support the product as you remove it from the wall.
2. It is essential that the new product is wired up in the same way as the old one.
3. The simplest way is either to label each conductor with the location of the terminal to which it connects as you release it or to transfer one conductor at a time to the corresponding terminal on the new product. (Alternatively refer to the appropriate wiring diagrams for guidance)
4. Before refixing the new product, double check your connections.
5. Place the product into the wall box, ensuring that no wires are trapped.
6. Once you are sure that all work has been completed correctly, replace the fuse for the circuit, switch the power back on, and test.

### When Installing From New

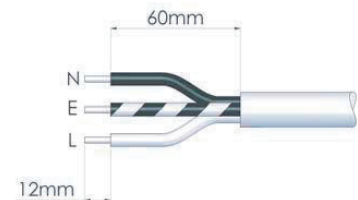
1. Select the appropriate size of mounting box (metal or patress) for either flush or surface mounting.
2. Ensure that the mounting box is free of any plaster lumps and projecting screws in the central areas of the box.
3. Always use cable of the correct rating and type.
4. Route the cable through the most suitable entry point of the mounting box. If a metal box is used, ensure that a protective cable grommet is fitted.
5. Carefully arrange the wiring so as to lie along the edges of the product or box, keeping the central area clear.
6. To assist with the correct installation of this product please consult the appropriate wiring diagram. When connecting the new accessory ensure that only the bare end of the wire enters the terminal, and no bare wires are visible. Always tighten the terminal screws securely.
7. An earth connection should always be made between the mounting box earth terminal, and the accessory earth terminal. If this earth wire is bare, it is essential that it is sheathed with a length of green/yellow sleeving.
8. Carefully position the accessory into the wall box, ensuring that no wires are trapped between the plate and the wall, and fully secure using the fixing screws provided. Do not over-tighten the screws.
9. Once you are sure that all work has been completed correctly, replace the fuse for the circuit, switch the power back on, and test. The product is now ready for use.

### Safety RCD Fused Connection Unit With Flex Outlet

1. Unscrew the two cord-grip screws and remove the blanking piece.
2. Prepare the flexible cable from the appliance as shown in the diagram on the right.
3. For flexible cable less than 6mm in diameter reverse the cord-grip so that the raised rib is in contact with the flex. Ensure the cable sheath is securely clamped using the cord-grip, as shown in the wiring diagram. Connect the wires to the correct terminal in accordance with the diagram on the right.

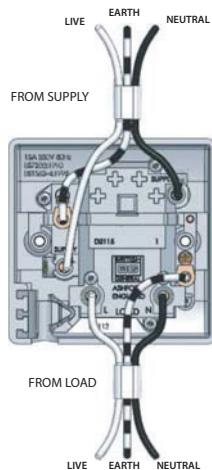
### Note

This product can also be used in "hard" wire installation. The blanking plug must be left in place, and the cable clamp is not used when there is no external flexible cable.



### Safety RCD Fused Connection Unit

Connect the cables as shown in the diagram.



### Replacing the fuse

1. Using a flat bladed screw-driver, carefully lever open the fuse carrier.
2. Pull the carrier out and replace the fuse.
- Note - the fuse carrier cannot be fully removed from the product.
3. Fit a new fuse (to BS1362) and push the carrier home so it sits flush with the surface of the faceplate.

If the new fuse fails again, check the connected appliance as it may be faulty or the total load of 13 Amps, 3120 Watts has been exceeded.

For a 3 Amp connection unit the total load should not exceed 720 Watts.

### Operating Instructions

Do read these operation instructions and strictly observe the test procedure after installation and when changing the fuse.

### Test procedure

- Stage 1:** Insert the appropriate BS1362 fuse in to the RCD Spur.
- Stage 2:** The RED indicator will normally show in the CLEAR window. If it does not, press RESET (orange) button and the RED indicator should appear.
- Stage 3:** Press the TEST button. The RED indicator will disappear from the CLEAR window.
- Stage 4:** Press the RESET button. The RCD has now been set for safe use provided the RED indicator shows in the CLEAR window.