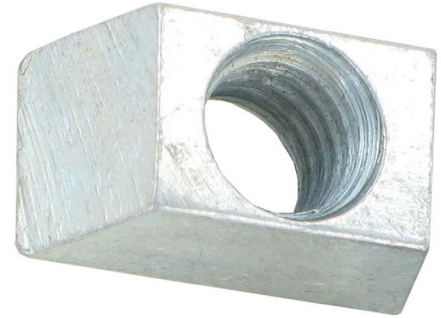


IWMIN6/8 - MINI WEDGE NUTS

Material:
Mild Steel

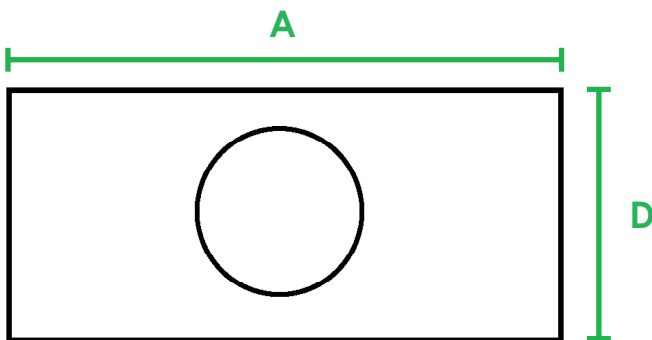
Finish:
Bright Zinc Plated

Deck Slot Size:
18mm Tapers to 10mm
(Width 9.6mm)

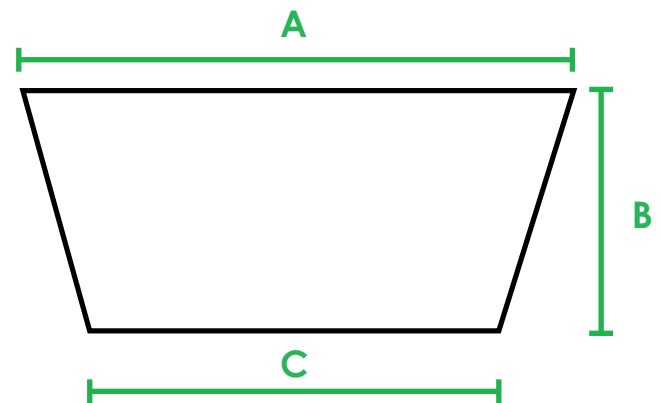


OTHER ADDITIONAL INFORMATION

Code	Size	A	B	C	D
IWMIN6	M6	18.0mm	9.6mm	10.0mm	9.6mm
IWMIN8	M8	18.0mm	9.6mm	10.0mm	9.6mm



Top View



Side View