

Description

G-Lite™ is the Enlite range of 304 stainless steel ground lights. Designed to be discreetly recessed these ground lights can be used for a number of applications such as lighting up pathways and patios making them perfect for domestic and commercial applications. They can project light up to 4 ways creating up to 360° light distribution using the 4 interchangeable bezels (sold separately).

Features & Benefits

- IP67 Mains voltage 304 stainless steel LED ground light
- Supplied with plastic mounting sleeve
- The EN-RGL2 can project light up to 4 ways creating up to 360° light distribution using the 4 interchangeable bezels (sold separately)
- Pre-wired with 1 metre of rubber cable
- For use with GU10 lamps – lamps not included (Max 35W lamp)
- Cut-out 94mm without mounting sleeve. Cut-out 98mm with mounting sleeve
- **3 year warranty**



EN-RGLC1
G-Lite™ Stainless Steel Recessed Ground Light Bezel 1 way



EN-RGLC2
G-Lite™ Stainless Steel Recessed Ground Light Bezel 2 way



EN-RGLC3
G-Lite™ Stainless Steel Recessed Ground Light Bezel 3 way

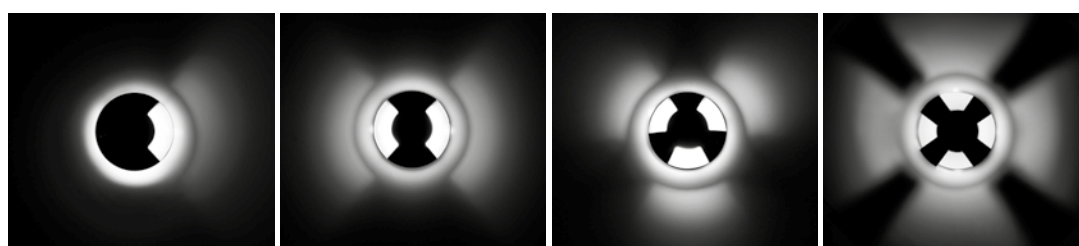


EN-RGLC4
G-Lite™ Stainless Steel Recessed Ground Light Bezel 4 way

EN-RGL2
240V GU10 Recessed Ground Light mounting sleeve & body

Cat. No.	Max (W)	Overall [Ø]	Cutout [Ø]	Recess Depth
GROUND LIGHT				
EN-RGL2	35W	110mm	98mm	160mm
BEZELS				
EN-RGLC1	G-Lite™ Stainless Steel Recessed Ground Light Bezel 1 way			
EN-RGLC2	G-Lite™ Stainless Steel Recessed Ground Light Bezel 2 way			
EN-RGLC3	G-Lite™ Stainless Steel Recessed Ground Light Bezel 3 way			
EN-RGLC4	G-Lite™ Stainless Steel Recessed Ground Light Bezel 4 way			

304 stainless steel not suitable for coastal installations

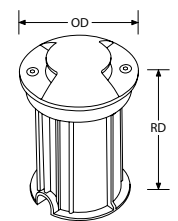


EN-RGLC1

EN-RGLC2

EN-RGLC3

EN-RGLC4



(OD) 110mm Overall Ø
(RD) 160mm Recess Depth

Technical Information

