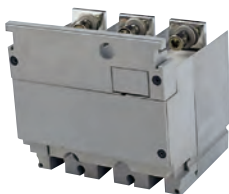


2



Metering facility

- 3 phase current transformer module with voltage measurement outputs.
- Fits directly on the terminals of the breaker.
- The voltage measurement outputs have inbuilt protection with automatic reset.
- Suitable for use with the PowerLogic range of meters.

| Breaker | CT ratio | VA output | Class at VA output | Part number | |
|---------|----------|-----------|--------------------|-------------|----------|
| | | | | 3 pole | 4 pole |
| NS100 | 125/5 | 1.1 | 1.0 | LV429461 | LV429462 |
| NS160 | 150/5 | 1.1 | 1.0 | LV430561 | LV430562 |
| NS250 | 250/5 | 1.1 | 0.5 | LV431569 | LV431570 |
| NS400 | 400/5 | 2.0 | 0.5 | LV432653 | LV432654 |
| NS630 | 600/5 | 2.0 | 0.5 | LV432861 | LV432862 |

Current transformer module nt transformer module

- 3 phase current transformer module.
- Fits directly on the terminals of the breaker.

| Breaker | CT ratio | VA output | Class at VA output | Part number | |
|---------|----------|-----------|--------------------|-------------|----------|
| | | | | 3 pole | 4 pole |
| NS100 | 125/5 | 1.6 | 3.0 | LV429457 | LV429458 |
| NS160 | 150/5 | 3.0 | 3.0 | LV430557 | LV430558 |
| NS250 | 250/5 | 5.0 | 3.0 | LV431567 | LV431568 |
| NS400 | 400/5 | 8.0 | 3.0 | LV432657 | LV432658 |
| NS630 | 600/5 | 8.0 | 3.0 | LV432857 | LV432858 |

Motor operator module

All 3 pole and 4 pole breakers up to 250A can be fitted with a motor operator mechanism allowing remote opening and closing of the circuit breaker.

Operating voltages

| | | |
|------|------|-----------|
| 50Hz | a.c. | 48 - 415V |
| | d.c. | 24 - 250V |

Specify requirements at time of ordering the breaker.

Rotary handles with inbuilt padlocking facilities

| Current rating | Part number | |
|----------------|-------------|------------|
| | Black | Red/yellow |
| Up to 250A | LV429337 | LV429339 |
| 400/630A | LV432597 | LV432599 |

Toggle padlocking attachments Locking in OFF position

| Current rating | Part number | |
|----------------|-------------|----------|
| | Removable | Fixed |
| 250A | 29370 | LV429371 |
| 630A | 29370 | LV432631 |
| 800A | 44936 | LV432631 |