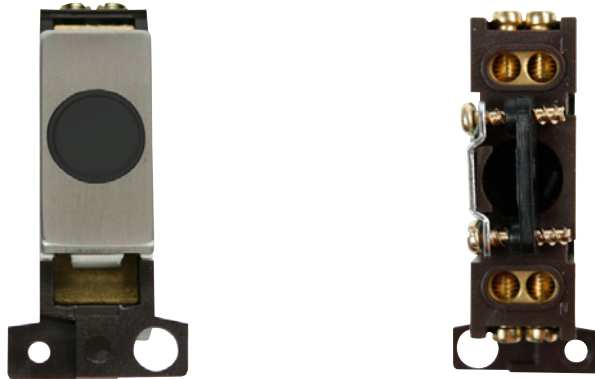


Technical Specification

Product Code: MD017BKSS

Description: 20A Ingot Flex Outlet Module



General Information

Dimensions	25mm (W) x 56.5mm (H) x 30mm (D)
Aperture Dimensions	32mm (W) x 31.5mm (H)
Finish	Stainless Steel
Flex Outlet	Black
Materials	Blank: Urea Rear Housing: Nylon Cover: Stainless Steel Terminals: Brass Terminal Screws: Steel & Yellow Passivated Bracket: Mild Steel Cord Grip: Nylon Screws: Nickel Plated Steel
Maximum Voltage	250V 50Hz
Load Rating	20A
Terminal Size	3.5mm \varnothing
Terminal Torque	0.4Nm
Terminal Capacity	4 x 1.5mm ² or 2 x 2.5mm ²
Flex Outlet	Yes (10mm \varnothing Through Front of the Module)
Back Box Depth	Dependent On Plate Used
Operational Temperature	-5°C to +40°C
Warranty	10 Years
Standards	BS 5733: 2010

Additional Information

Ensure that the mains supply is isolated before commencing installation and refer to the circuit diagram with the relevant product.
Bare earth cables must always be covered with appropriate sleeving and wired to the earth terminal.