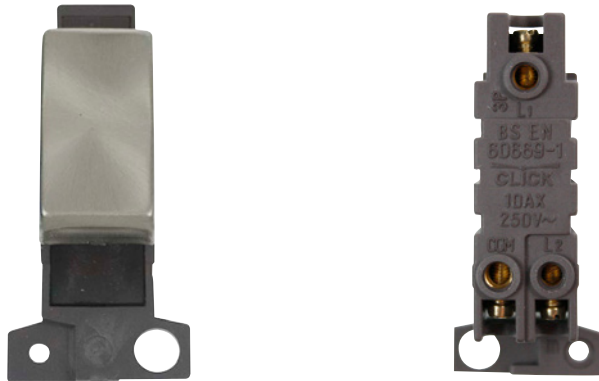


# Technical Specification

Product Code: MD075SC

Description: 10A 3 Position Retractive Switch Module



## General Information

Dimensions	25mm (W) x 57mm (H) x 27mm (D)
Aperture Dimensions	16mm (W) x 31.5mm (H)
Finish	Satin Chrome
Materials	Rocker Switch: Urea Rear Housing: Nylon Switch Cover: Stainless Steel Terminals: Brass Terminal Screws: Steel & Yellow Passivated Contacts: Silver "on-lay" Copper / Brass Internal Busbars: Formed Pressed Brass
Maximum Voltage	250V 50Hz
Load Rating	10A
Terminal Size	3.5mm $\varnothing$
Terminal Torque	0.4Nm
Terminal Capacity	4 x 1.5mm <sup>2</sup> or 2 x 2.5mm <sup>2</sup>
Switch Contact	Press to Make
Back Box Depth	Dependent On Plate Used
Operational Temperature	-5°C to +40°C
Warranty	10 Years
Standards	BS EN 60669-1:1999 +A1:2002 +A2:2008

## Additional Information

Ensure that the mains supply is isolated before commencing installation and refer to the circuit diagram with the relevant product.  
Bare earth cables must always be covered with appropriate sleeving and wired to the earth terminal.

UK Design Registration: 3015621