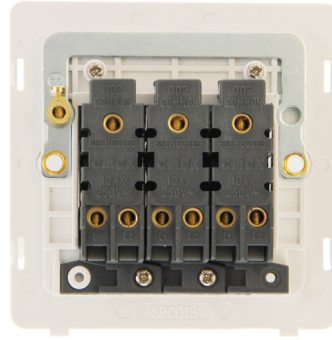
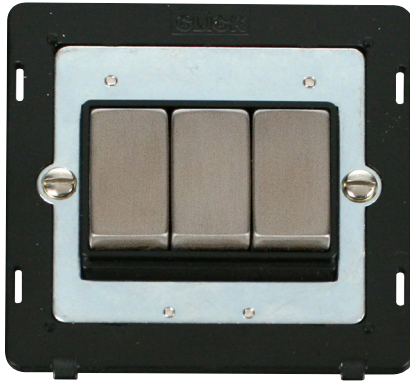


Product Code: SIN413BKSS

Description: 10AX Ingot 3 Gang 2 Way Plate Switch Insert



**General Information**

<b>Dimensions</b>	82.5mm (W) x 82.5mm (H) x 2.5mm (D)
<b>Insert Finish</b>	Black Insert With Stainless Steel Switches
<b>Cover Plate Finishes Available</b>	BS (Brushed Stainless), CH (Polished Chrome), SS (Stainless Steel), BK (Matt Black), PW (Polar White) & RD (Red)
<b>Materials</b>	Insert: Polycarbonate Switch Cover: Stainless Steel Rear Housing: Nylon Terminals: Brass Terminal Screws: Steel & Yellow Passivated Contacts: Silver "on-lay" Copper / Brass Internal Busbars: Formed Pressed Brass Earth Strap: Mild Steel
<b>Maximum Voltage</b>	250V~ 50Hz
<b>Load Rating</b>	10AX (Suitable for Inductive Loads)
<b>Plate Fixing Centres</b>	60.3mm
<b>Terminal Size</b>	3.5mmø
<b>Terminal Torque</b>	0.5Nm
<b>Terminal Capacity</b>	4 x 1.5mm <sup>2</sup> or 2 x 2.5mm <sup>2</sup>
<b>Two Way</b>	Yes
<b>Ingress Protection</b>	IP20
<b>Back Box Depth</b>	25mm Minimum
<b>Termination Type</b>	Screw
<b>Operational Temperature</b>	-5°C to +40°C
<b>Warranty</b>	10 Years
<b>Standards</b>	BS EN 60669-1:1999 +A1:2002 +A2:2008

**Additional Information**

Ensure that the mains supply is isolated before commencing installation and refer to the circuit diagram with the relevant product.  
Bare earth cables must always be covered with appropriate sleeving and wired to the earth terminal.  
Interchangeable with modules in the MiniGrid Range.

Product Code: SIN413BKSS

Description: 10AX Ingot 3 Gang 2 Way Plate Switch Insert

**Compatible Cover Plates**

Plate Dimensions	86mm (W) x 86mm (H) x 4mm (D)
Cover Plate Finishes Available	BS (Brushed Stainless), CH (Polished Chrome), SS (Stainless Steel), BK (Matt Black), PW (Polar White) & RD (Red)
Materials:	Decorative: Stainless Steel, Black, Polar White & Red: Polycarbonate



SCP403BS



SCP403CH



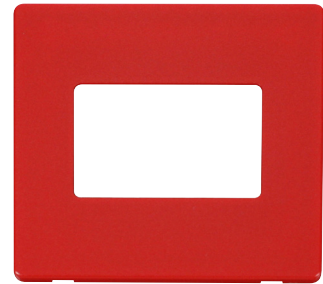
SCP403SS



SCP403BK



SCP403PW



SCP403RD