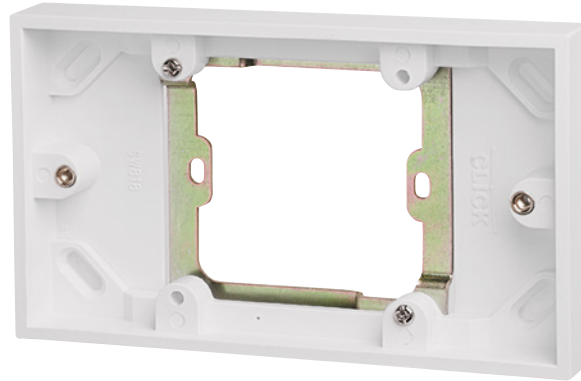


Product Code: PRW091

Description: 1 Gang To 2 Gang 16mm Deep Converter Pattress



General Information

Dimensions	147mm (W) x 87mm (W) x 20mm (D)
Finish	Polar White
Materials	Pattress Box: Urea Threaded Lug: Brass
Earth Terminal Provided	No
Cable Restraint Provided	No
Back Box Knockouts	No Knockouts
Operational Temperature	-5°C to +40°C
Warranty	20 Years

Standards BS 4662:2006+A1:2009

Additional Information

Ensure that the mains supply is isolated before commencing installation and refer to the circuit diagram with the relevant product.
 Bare earth cables must always be covered with appropriate sleeving and wired to the earth terminal. All white moulded accessories are manufactured using Urea Formaldehyde, which has similar inherent properties to antimicrobial additives that inhibit the growth of infectious diseases. All products have been independently tested and achieved a 99.9% kill rate across all four types of the strains of bacteria - MRSA, E-Coli, Salmonella, and Klebsiella Pneumoniae.