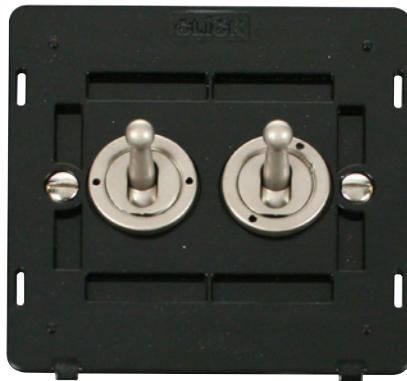


Product Code: SIN422PN

Description: 10AX 2 Gang 2 Way Toggle Plate Switch Insert



Representative Image

### General Information

<b>Dimensions</b>	82.5mm (W) x 82.5mm (H) x 2.5mm (D)
<b>Insert Finish</b>	Black Insert With Pearl Nickel Switches
<b>Cover Plate Finishes Available</b>	BS (Brushed Stainless), CH (Polished Chrome), SS (Stainless Steel), BK (Matt Black) & PW (Polar White)
<b>Materials</b>	Insert: Polycarbonate Switch Front & Nut: Cast Zinc Rear Housing: Nylon Terminals: Brass Terminal Screws: Steel & Yellow Passivated Contacts: Silver "on-lay" Copper / Brass Internal Busbars: Formed Pressed Brass Earth Strap: Mild Steel
<b>Maximum Voltage</b>	250V~ 50Hz
<b>Load Rating</b>	10AX (Suitable for Inductive Loads)
<b>Plate Fixing Centres</b>	60.3mm
<b>Terminal Size</b>	4.9mm x 4.1mm
<b>Terminal Torque</b>	1.2Nm
<b>Terminal Capacity</b>	4 x 1.5mm <sup>2</sup> or 2 x 2.5mm <sup>2</sup>
<b>Two Way</b>	Yes
<b>Ingress Protection</b>	IP20
<b>Back Box Depth</b>	35mm Minimum
<b>Operational Temperature</b>	-5°C to +40°C
<b>Warranty</b>	10 Years
<b>Standards</b>	BS EN 60669-1:1999 +A1:2002 +A2:2008

### Additional Information

Ensure that the mains supply is isolated before commencing installation and refer to the circuit diagram with the relevant product.  
Bare earth cables must always be covered with appropriate sleeving and wired to the earth terminal.  
Intermediate toggle switches modules are available which interchange with the modules fitted. Order MD9125PN for pearl nickel finish.

Product Code: SIN422PN

Description: 10AX 2 Gang 2 Way Toggle Plate Switch Insert

**Compatible Cover Plates**

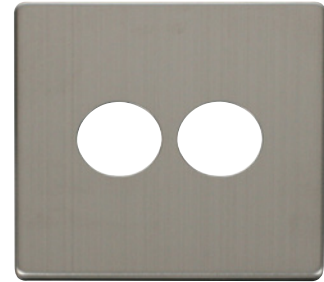
Plate Dimensions	86mm (W) x 86mm (H) x 4mm (D)
Cover Plate Finishes Available	BS (Brushed Stainless), CH (Polished Chrome), SS (Stainless Steel), BK (Matt Black) & PW (Polar White)
Materials:	Decorative: Stainless Steel, Black & Polar White: Polycarbonate



SCP222BS



SCP222CH



SCP222SS



SCP222BK



SCP222PW